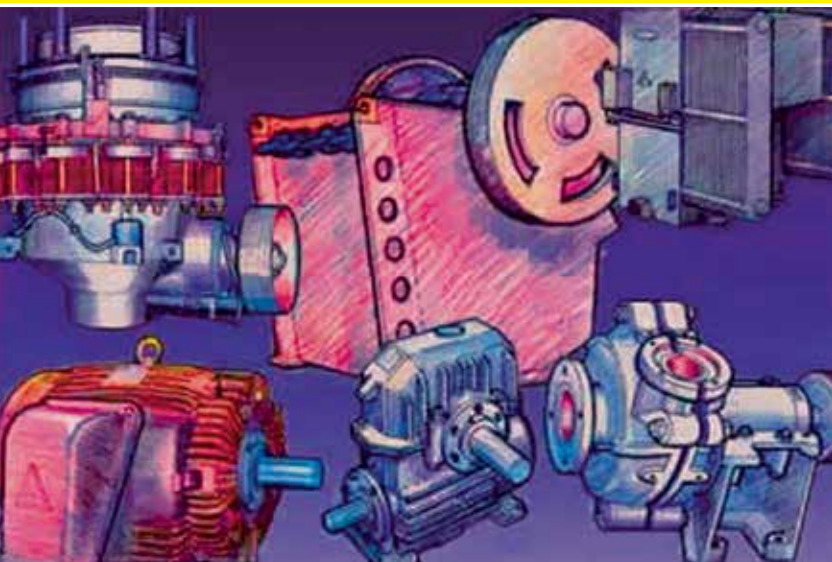


M & Q EQUIPMENT

ISSUE 8 | 2019 | BRISBANE



THE SOURCE OF NEW AND USED MINING
AND QUARRYING EQUIPMENT WORLDWIDE

CRUSHERS • FEEDERS • SCREENS • CONVEYORS
TRANSFORMERS • ALTERNATORS • ELECTRIC MOTORS
GEAR BOXES • COMPRESSORS • PUMPS • BALL MILLS • DRYERS

Proudly manufacturing



**AUSTRAL
PUMPS**

103 Bandara Street
Richlands Queensland 4077 Australia
Email: robo@mqe.com.au

PHONE: 07 3879 3335

Fax: 07 3879 3336

www.mqe.com.au

SLURRY PUMP PARTS

**OTHER
SIZES AND
TYPES
AVAILABLE
ON
REQUEST**



**AUSTRAL
PUMPS**

M & Q Equipment stock and sell an extensive range of replacement parts to suit Warman and Austral Pumps. We also supply complete New Austral Pumps and Rebuilt Warman Pumps. We offer quality products that come in a variety of materials at a lower cost. We strive to minimize customer downtime and maximize customer savings. We hold all parts ex stock ready for immediate delivery and are committed to providing our customers great service. We have a specialized team with over 50 years experience in the Slurry Pump Industry. Our range of parts is continuously increasing and developing as our presence in the industry increases.

M & Q Equipment stock the full range of parts to suit the following pumps:-

SC Pumps

1 / ¾ SC
3 / 2 SC
4 / 3 SC
6 / 4 SC
8 / 6 SC
10 / 8 SC

ASC Pumps

1 / ¾ ASC
3 / 2 BSC
4 / 3 CSC
6 / 4 DSC
8 / 6 ESC
10 / 8 ESC

M Pumps

10 / 8 EM
10 / 8 FM

AH Pumps

1 / 1 ½ BAH
2 / 1 ½ BAH
3 / 2 CAH
4 / 3 CAH
4 / 3 DAH
6 / 4 DAH
6 / 4 EAH
8 / 6 EAH
8 / 6 FAH
10 / 8 FAH
10 / 8 GAH
12 / 10 FAH
12 / 10 GAH
14 / 12 FAH
14 / 12 GAH

Sump Pumps

40 PV SP
40 PV SPR
65 QV SP
65 QV SPR
100 RV SP
100 RV SPR
150 SV SP
200 SV SP
40 VC GPS
40 VCH GPS
65 VD GPS
65 VDH GPS
100 VE GPS
100 VEH GPS

HX Pumps

8 / 6 FHX
8 / 6 FFHX
8 / 6 FAHX

Dredge Pumps

6 / 4 DG
8 / 6 EG
8 / 6 FGH
10 / 8 FG
10 / 8 FGH
10 / 8 SGH
12 / 10 FG
12 / 10 GG
12 / 10 GGH

TC Pumps

2 / 2 QV TC
3 / 3 QV TC
4 / 4 QV TC
6 / 6 RV TC

HH Pumps

3 / 2 DHH
4 / 3 EHH



PARTS TO SUIT AH PUMPS



PARTS TO SUIT TC PUMPS



PARTS TO SUIT ASC PUMPS



PARTS TO SUIT SUMP PUMPS



PARTS TO SUIT SC PUMPS

WE WILL MEET OR BEAT ANY COMPETITORS PRICES

WE WILL MEET OR BEAT ANY COMPETITORS PRICES



**AUSTRAL
PUMPS**

SLURRY PUMP **PARTS**



Gland Packing



Shaft Sleeves



Impellers



Liners



Expellers



Stuffing Boxes



Shafts



Joint Rings

OUR RANGE OF MATERIALS INCLUDE

- | | |
|---------------------------------------|--------------------|
| - 420 Martenstetic Stainless Steel | - Natural Rubber |
| - 316 Stainless Steel | - Polyurethane |
| - Chrome Alloy | - Tungsten Carbide |
| - Ductile Iron | - Neoprene |
| - Butyl | - Ryton |

WE WILL MEET OR BEAT ANY COMPETITORS PRICES

WE CAN HELP YOUR BUSINESS...

- Having trouble getting parts for your slurry pump?
We hold your parts in stock
- All parts are held in stock ready for immediate delivery
- Want quality parts and save money
- Australian parts for Australian conditions
- Complete pumps are also available

OTHER PARTS AVAILABLE UPON REQUEST

PHONE 07 3879 3335

WE WILL MEET OR BEAT ANY COMPETITORS PRICES

AVAILABLE FOR HIRE



CC3093: J50 Terex Jaques Cone Crusher: Complete with Motor, Lube System & Base Frame. Condition: Excellent.

WARMAN PUMPS



We have the largest stock of second hand **WARMAN PUMPS** worldwide. Offered fully Refurbished in sizes from 1x3/4 up to 20/20. In the following models **SC,AH,HH,M,L,D,G,GH,TC,GPS,SP.**



CV3095: 1200 x 24M Striker Radial Stacker: Hire Unit
– Electric Drive – Model ST2412
– wheel Mounted.
Condition: Excellent.



MP3139: BB 285 Rammer Hydraulic Rock Breaker:
Complete with 777 Hammer – 18.5 KW Power Pack & Platform with Handrails.
Condition: As New.

INDEX

| | | |
|----|---------------------------------------|----|
| AT | ALTERNATORS GENERATORS | 6 |
| CC | CONE AND GYRO CRUSHERS | 6 |
| CG | ROD, BALL, GRINDING MILLS | 8 |
| CI | IMPACT CRUSHERS | 9 |
| CJ | JAW CRUSHERS | 9 |
| CP | CRUSHING PLANTS | 11 |
| CR | ROLLS CRUSHERS | 11 |
| CS | CRUSHER SPARES | 12 |
| CV | CONVEYORS | 12 |
| CY | CYCLONES | 13 |
| DP | DREDGES & PIPES | 15 |
| EB | ELECTRICAL SWITCHBOARDS | 15 |
| EL | TRANSFORMERS | 17 |
| EM | ELECTRIC MOTORS SQUIRREL CAGE | 22 |
| ER | ELECTRIC MOTORS SLIPRING | 27 |
| ES | ELECTRIC MOTORS - DC AND OTHERS | 28 |
| ET | ELECTRIC MOTOR STARTERS | 28 |
| EZ | ELECTRICAL - MISCELLANEOUS | 29 |
| FA | FANS & BLOWERS | 29 |
| FE | FEEDERS | 30 |
| GB | GEAR BOXES | 31 |
| GM | GEARED MOTORS | 33 |
| KD | KILNS AND DRYERS | 33 |
| LE | LABORATORY EQUIPMENT | 34 |
| MG | MAGNETS | 34 |
| MP | MINING PROCESS | 36 |
| MX | MIXERS | 38 |
| PU | PUMPS | 38 |
| SC | SCREENS | 51 |
| SL | SILOS, TANKS & HOPPERS | 54 |
| SU | SUNDRIES | 55 |
| VA | VALVES | 56 |
| WE | WASHING EQUIPMENT | 57 |
| WH | WINCHES | 57 |

M & Q EQUIPMENT for themselves and for vendors of any items listed
For whom they act give notice that:-

- (1) "All information given in relation to any item contained in this catalogue or given orally is given without responsibility.
- (2) Intending purchasers should satisfy themselves as to the accuracy of all the information given, by their own inspection, research or as otherwise necessary."

ALTERNATORS AND GENERATOR SETS

- AT3056 **875 KVA Caterpillar Generator Set:** CAT D399 Engine - 490 Hrs - Complete with Control Panel, Heat Exchanger - Ex Standby. Condition: Excellent.
- AT3051 **1700 KVA Perkins / FG Wilson Generator Set:** Perkins V16 Quad Turbo Engine - 1300 Hours - Complete with Control Panel and Exhaust. Condition: Excellent.
- AT3050 **1700 KVA Perkins / FG Wilson Generator Set:** Perkins V16 Quad Turbo Engine - 1267 Hours - Complete with Control Panel and Exhaust. Condition: Excellent.
- AT3047 **150 KVA Dorman Generator Set:** Dorman Model 6Q Coupled to McColl Alternator. Skid Mounted - Ex Standby Set - New Batteries - Serviced.
- AT3039 **350 KVA Acoustic Cabinet:** 2.6 x 5.2 x 3m - Sound Proof Cover to suit up to 450 KVA Generator Set. Condition: Very Good.

CONE AND GYRATORY CRUSHERS

- CC3096 **1650 Kawasaki Cone Crusher:** Complete with Motor, Lube System & Hydraulics. Condition: Refurbished.
- CC3095 **G35 Jaques Cone Crusher:** Complete with Electric Motor & Lube System. Condition: Very Good.
- CC3094 **G50 Jaques Cone Crusher:** Complete with Electric Motor & Lube System. Condition: Good.
- CC3093 **J50 Terex Jaques Cone Crusher:** Complete with Motor, Lube System & Base Frame. Condition: Excellent.
- CC3092 **1100 Nordberg / Lockomo Cone Crusher:** Model G1211. Condition: Average.
- CC3091 **1350 Parker Cone Crusher:** Complete with Skid Base, Crusher, Motor, Discharge Coveyor & Switchboard. Condition: Good.
- CC3090 **2'4" TY Jaques Cone Crusher:** Complete with Base Frame & Feed Hopper. Condition: Good.
- CC3089 **Crusher Vibration Mounts:**
- CC3088 **36" STD HD Symons Cone Crusher:** Complete with Motor & Lube System. Condition: Overhauled.
- CC3082 **800 Kawasaki Cone Crusher:** Model KM-1008G - 100mm Feed Opening. Condition: Very Good.
- CC3079 **36" STD HD Minyu Cone Crusher:** Model MCC36 - Complete with Base Frame. Condition: Very Good.
- CC3070 **36" SH HD Pegson Cone Crusher:** Unit is complete with Lube Tank & Stand. Condition: Good.
- CC3065 **24" STD HD Nordberg Symons Cone Crusher:** 2' - Complete with Lube System. Condition: Unused.

FOR FULL STOCK LIST & PHOTOGRAPHS SEE WEBSITE



CC3097-CC3098: 1650 Unitec Cone Crusher: Complete with Motor, Lube System & Hydraulics. Condition: Unused - 2 Units Available.



CC3094: G50 Jaques Cone Crusher: Complete with Electric Motor & Lube System. Condition: Very Good.



CC3095: G35 Jaques Cone Crusher: Complete with Electric Motor & Lube System. Condition: Very Good.



CG3071: 2970 x 5610 ANI Ruwolt Ball Mill: Rubber Lined - Complete with 710 KW Electric Motor, Gear Box, Control Room, Side Plates & Spares. Condition: Excellent.



CG3068: 3000 x 4000 ANI Ruwolt Ball Mill: Metal Lined - Complete with 400 KW Electric Motor, Gear Box, Clutch, Sole Plates & Spares. Condition: Very Good.



CI3051: A700 Metso Barmac Vertical Shaft Impactor: Complete with Electric Motor, Electric Starter & Stand. Condition: Excellent.

- CC3063 **36" STD HD Nordberg Symons Cone Crusher:** 3' - Fitted with Hydraulic Adjustment and Lube System. Condition: Unused.
- CC3062 **36" SH HD Nordberg Symons Cone Crusher:** 3' - Fitted with Hydraulic Adjustment and Lube System. Condition: Unused.
- CC3060 **66" STD HD Nordberg Symons Cone Crusher:** 5 1/2' - Fitted with Hydraulic Adjustment & Locking and Lube System. Condition: Unused.
- CC3059 **51" STD HD Nordberg Symons Cone Crusher:** 4 1/4' - Fitted with Hydraulic Adjustment & Locking and Lube System. Condition: Unused.
- CC3058 **51" SH HD Nordberg Symons Cone Crusher:** 4 1/4' - Fitted with Hydraulic Adjustment & Locking and Lube System. Condition: Unused.
- CC3056 **84" STD HD Nordberg Symons Cone Crusher:** 7' - Fitted with Hydraulic Adjustment & Locking and Lube System. Condition: Unused.
- CC3046 **4 1/4' STD HD Symons Cone Crusher:** Complete with some Spares. Condition: Average.

BALL, ROD, GRINDING MILLS

- CG3071 **2970 x 5610 ANI Ruwolt Ball Mill:** Rubber Lined - Complete with 710 KW Electric Motor, Gear Box, Control Room Sole Plates & Spares. Condition: Excellent.
- CG3070 **50mm AJA Engineering Ball Mill Balls:** Vega Rock G11 - 12 Drums Available. Condition: Unused.
- CG3069 **1300 x 1300 Ball Mill:** Complete with Skid Base, 22KW Drive & Metal Liners. Condition: Good.
- CG3068 **3000 x 4000 Ani Ruwolt Ball Mill:** Metal Lined - Complete with 400 KW Electric Motor, Gear Box, Clutch, Sole Plate & Spares. Condition: Very Good.
- CG3067 **7300 x 12500 Polysius Ball Mill:** 2 Units Available - Complete with 14MW Installed Drive, Metal Liners & Full Auxiliary Equipment. Condition: Unused.
- CG3064 **4200 x 6800 Morgardshammar Sag Mill:** Complete with 1540 KW DC Drive - Gear Box, Pinion, Girth Gear, Rubber Liners, Starters, Transformer & Switch Room. Condition: Very Good.
- CG3060 **4000 x 1600 Svedala Sag Mill:** Complete with 250 KW Drive - Metal Liners - Manuals & all Associated Equipment Condition: As New.
- CG3056 **40mm Magotteaux Ball Mill Balls:** 3 Drums Available. Condition: Unused.

FOR FULL STOCK LIST & PHOTOGRAPHS SEE WEBSITE

- CG3053 **1600 x 2500 Lih Shan Ball Mill:** Unlined - Overflow Discharge - 90 KW - Roller Bearing. Condition: Excellent.
- CG3051 **2400 x 3300 Newell Dunford Ball Mill:** Rubber Lined - Grate Discharge - 224 KW Drive. Condition: Very Good.
- CG3042 **1200 x 4800 Clyde Caruthers Ball Mill:** Complete on Skid Base with 55 KW Drive - Metal Lined Condition: Excellent.

IMPACT CRUSHERS

- CI3051 **A700 Metso Barmac Vertical Shaft Impactor:** Complete with Electric Motor, Electric Starter & Stand. Condition: Excellent.
- CI3050 **APKM 1013 Hazemag Horizontal Shaft Impactor:** Mounted on Stand with Electric Motor, Hydraulic System & Discharge Conveyor. Condition: Very Good.
- CI3049 **VS100 RR Auspactor VSI:** Complete with 185 KW Weg Motor. Condition: Excellent.
- CI3048 **VI200 Metso Barmac Vertical Shaft Impactor:** Complete with 132 KW Drive. Condition: Unused.
- CI3047 **8100 Metso Barmac Vertical Shaft Impactor:** B8100DD - Dual Drive - Complete with Anti Vibration Frame. Condition: Very Good.
- CI3043 **1313 Hazemag Impactor:** Model APS 1313. Condition: Good.
- CI3042 **500 x 400 Pallmann Knife Mill:** Series 400 - Model PS4-5 - F4/F5 - Stainless Steel Construction. Condition: As New.

JAW CRUSHERS

- CJ3084 **42" x 36" Jaques Jaw Crusher:** Double Toggle - Roller Bearing - Type H. Condition: Very Good.
- CJ3083 **36" x 6" Goodwin Barsby Granulator:** Single Toggle - Roller Bearing. Condition: Very Good.
- CJ3082 **40" x 25" Pegson Telsmith Jaw Crusher:** Single Toggle - Roller Bearing Condition: Good.
- CJ3080 **1300 x 300 Jian She Granulator:** Single Toggle - Roller Bearing. Condition: Excellent.
- CJ3079 **42" x 30" Jaques Jaw Crusher:** Single Toggle - Roller Bearing. Condition: Good.
- CJ3077 **55" x 32" Terex Jaques Jaw Crusher:** Single Toggle - Model JW55 Condition: Unused.
- CJ3071 **30" x 20" Jaques Jaw Crusher:** Single Toggle.
- CJ3060 **36" x 24" Kue Ken Jaw Crusher:** Double Toggle - Roller Bearing. Condition: Good.

FOR FULL STOCK LIST & PHOTOGRAPHS SEE WEBSITE



CJ3077: 55" x 32" Terex Jaques Jaw Crusher:
Single Toggle – Model JW55.
Condition: New.



CJ3080: 1300 x 300 Jian She Granulator: Single Toggle
– Roller Bearing.
Condition: Excellent.



CP3028: Crushing Plant Switchroom 1250Amp SJ Electric Main Switchboard:
Complete with 40" Switchroom
– CT Metering – 4 Crusher Starters
– 2 Screen Starters
– Conveyor Starters & DB Section. Condition: Like New.



CI3048: VI200 Metso Barmac Vertical Shaft Impactor:
Complete with 132 KW Drive.
Condition: Unused.



CI3047: 8100 Metso Barmac Vertical Shaft Impactor: B8100DD – Dual Drive – Complete With Anti Vibration Frame. Condition: Very Good.



CV3096: 600 x 15 Metre M & Q Radial Stacker: Complete with 4 KW Electric Drive, Lanyard Switches. Condition: New.

- CJ3050 60" x 50" GOH Jaw Crusher:** Single Toggle - Roller Bearing
Condition: Very Good.
- CJ3049 60" x 48" Allis Chalmers Jaw Crusher:** Double Toggle
– Roller Bearing - Complete with Spares.
- CJ3047 48" x 42" Kobe Allis Jaw Crusher:** Double Toggle
– Roller Bearing - Model 42-48DT. Condition: Excellent.
- CJ3039 42" x 30" Kue Ken Jaw Crusher:** Double Toggle Roller Bearing - Complete with Motor. Condition: Excellent.

CRUSHING PLANTS

- CP3028 1250 AMP SJ Electric Main Switch Board:** Complete with 40' Switch Room - CT Metering - 4 Crusher Starters
– 2 Screen Starters - Conveyor Starters & DB Section.
Condition: Like New.
- CP3027 3M x 3M ADB Control Cabin:** Complete with 2 Windows & Internal Bench. Condition: Excellent.
- CP3026 36" x 24" EMS Primary Crushing Station:** Complete with 10m Feed Hopper, Vibrating Grizzly Feeder, Single Toggle Jian She Jaw Crusher, Frame & Drive Motors. Condition: Good.
- CP3023 42" x 32" Cedarapids Mobile Crushing Plant:** Complete with Tri Axle Trailer, Feeder, Drive Motor & Discharge Conveyor. Condition: Good.
- CP3016 39" Kemco Tertiary Crushing Plant:** Mobile
– Trailer Mounted CTF 39-3R Complete with Electrics.
Condition: Good.

ROLLS CRUSHERS

- CR3027 36" x 48" RB-P Shumar Rolls Crusher:** Primary - Double Drum - Complete with Twin 30 KW Drives.
Condition: Very Good.
- CR3026 500 MMD Sizer:** Set up on Stand - Complete with Drive Motor & 6 Tooth Segments - Triple Length Case Series.
Condition: Excellent.
- CR3019 Size D Jaques Drum Crusher:**



CR3029: 800 x 670 Soest-Ferrum Double Drum Rolls Crusher: Complete with 1200 Diameter Pulleys
– Smooth Drum.
Condition: Excellent.

CRUSHER SPARES

- CS3022 **1500Z Kawasaki Cone Crusher Spares:** Eccentrics, Bushes, Countershaft Box, Gear Sets. Condition: Unused.
- CS3020 **4-1/4' STD HD M & Q Manganese:** Bowl Liner - Medium to suit Coarse Bowl - Part No. 4830-4341. Condition: Unused.
- CS3019 **4 1/4' SH HD Nordberg Symons Manganese:** Bowl Liner - Concave Liner Fine Profile - Part No. 10-4829-8941. Condition: Unused.
- CS3015 **C200 Kue Ken Manganese:** Full Set Jaw Liners. Condition: New.
- CS3014 **HP300 Metso/Nordberg Manganese:** Standard Medium Mantle - Part No. 5013-2073. Condition: Unused.
- CS3013 **HP300 Metso/Nordberg Manganese:** Standard Medium Concave - Part No. 4829-4638. Condition: Unused.
- CS3009 **3' STD Symons Manganese:** Standard Coarse Concave - Part No. 4829-6576. Condition: New.
- CS3006 **48" x 42" DT Jaques Jaw Plates:** Part Numbers AW1562; AW1563; AW1564; AW1565. Condition: Unused.
- CS3005 **51" Kue Ken Crown Wheel & Pinion:** Unused.
- CS3004 **HP700 Metso Manganese:** Standard Fine Concave - Part No. 4831-4373. Condition: Unused.
- CS3003 **HP700 Metso Manganese:** Standard Fine Mantle - Part No. 5014-3849. Condition: Unused.
- CS3002 **84" STD HD ANI Bradken Distribution Plate:** Condition: Unused.

CONVEYORS

- CV3096 **600 x 15 Metre M & Q Radial Stacker:** Complete with 4KW Electric Drive - DOL Electric Starter, Lanyard Switches. Condition: New.
- CV3095 **1200 x 24M Striker Radial Stacker:** Hire Unit - Electric Drive - Model ST2412 - Wheel Mounted. Condition: Excellent.
- CV3092 **600 x 15M Finlay Radial Stacker:** Hydraulic Drive - Hydraulic Luff Up & Down. Condition: Good.
- CV3090 **600 x 12M M & Q Radial Stacker:** Complete with 4KW Electric Drive - DOL Electric Starter - Lanyard Switches. Condition: New.
- CV3087 **750 x 18M Conveyor:** Complete with Drive Motor & Torque Arm, Gear Box, Lagged Head Drum & Tail Take up. Condition: Excellent.
- CV3080 **650 x 12M Precision Screen Radial Stacker:** Hydraulic Drive - Hydraulic Raise/Lower. Condition: Ok.
- CV3078 **75 KW Flender / Tefco Conveyor Drive:** Consisting of Flender Gear Box 131RPM Output - Head & Tail Drum Face 1700 x 780 Dia. Condition: As New.

[FOR FULL STOCK LIST & PHOTOGRAPHS SEE WEBSITE](#)

Conveyors Continued

- CV3076 **750 x 4.1M M & Q Conveyor:** Complete with 2.2 KW Gear Motor & Large Head Drum. Condition: Excellent.
- CV3075 **600 x 7M M & Q Conveyor:** Complete with Walkway, 4 KW Motor & Fenner Gear Box. Condition: Good.
- CV3073 **750 x 7.5M Conveyor:** Stringer Type - Hyrdraulic Drive. Condition: Good.
- CV3068 **200 KW Flender Conveyor Drive:** Consisting of Pope 200 KW 4 Pole Motor coupled to Flender KZA320 Ratio 19.2 to 1 Gear Box driving Fox Pulley 1150 Face - 900 Diameter. Condition: Very Good.
- CV3067 **900 x 110M Apex Conveyor Belt:** 4 Ply - 7mm Top Cover - 2mm Bottom Cover. Condition: Unused.
- CV3066 **600 x 11M Conveyor:** Stringer Type - Heavy Construction. Condition: Very Good.
- CV3065 **600 x 6M Conveyor:** Stringer Type. Condition: Good.
- CV3064 **750 x 40M Conveyor:** Truss Type - One side Walkway - Complete with Take up Tower. Condition: Very Good.
- CV3062 **600 x 25M Conveyor:** Truss Type - in 2 x 12.5 Metre Sections - New Rollers, New Belt. Condition: New.
- CV3061 **200 x 5500 Screw Conveyor:** Heavy Duty.
- CV3059 **1500 x 67M Conveyor Belt:** 4 Ply - 6mm Top Cover - 2mm Bottom Cover. Condition: Unused.
- CV3055 **900 x 67M Conveyor:** Enclosed Truss Type - Complete with Head & Tail Drum - Single Side Walkway. Condition: Very Good.
- CV3046 **500 KW Bliss Fox Conveyor Drive Head:** Model 3000 - Belt Speed 425 ft/minute. Complete with 500 KW Slipring Motor.
- CV3039 **500 x 14.5 M Screw Conveyor:** Fitted with Fenner G Torque Arm Gear Box.

CYCLONES

- CY3084 **6" Warman Cyclone:** Model CS. Condition: Refurbished.
- CY3082 **4" Warman Cyclone:** Rubber Lined. Condition: Good.
- CY3081 **27" Linatex Cyclone:** Rubber Lined - Complete with Fishtail. Condition: Very Good.
- CY3080 **12" Linatex Cyclone:** Rubber Lined - Complete with Fishtail. Condition: Good.
- CY3079 **250 CVX Weir Warman Cyclone:** Cavex - Complete with Frame & Discharge Launder. Condition: Unused.
- CY3078 **18" Linatex Cyclone:**
- CY3077 **18" Linatex Cyclone:**
- CY3060 **675mm (27") Austral Cyclone:** New.

[FOR FULL STOCK LIST & PHOTOGRAPHS SEE WEBSITE](#)



CY3085: 400 CVX Weir Warman Cyclone: Cavex - Monolithic - Ceramic Lined.
Condition: Excellent.



CY3077: 18" Linatex Cyclone:
Fitted with Extended Feed Box
- Complete with Fishtail.



DP3022: 10 x 8 SGH Dredge: Cutter Suction - 10/8 SGH Warman Pump - K19 Cummins - Winch Propelled. Condition: Fully Refurbished.



EB3078: 2500 Amp Integra Switchboard: Current 2500 Amp - 415 Volts. Condition: As New.



EB3069: RM6 Schneider Ring Main Unit: 12KV - 630 Amp. Condition: New/Unused.



EB3071: 1250 Amp Mechanical Services DB Board: 1000V - 1250 Amp incoming Circuit Breaker - 5 x 400 Amp Outgoing - Complete with Galvanised Frame. Condition: Very Good.

- CY3058 **3" Austral Cyclone:** Rubber Lined - Capacity .5 to 1.5 Litres/ Second @ 12 Micron Cut. Condition: New.
- CY3057 **20" Warman Cyclone:** Model CS - Rubber Lined.
- CY3049 **20" Krebs Cyclone:** Model DS20 LSB - Rubber Lined. Condition: Very Good.
- CY3042 **20" Warman Cyclone:** Model RE - Rubber Lined - Complete with Spigot. Condition: Good.
- CY3020 **10" Warman Cyclone:** 10CE - 4 Off Available. Condition: Good.

DREDGES AND PIPE

- DP3033 **2.5M x 7.5M Custom Work Barge:** Complete with 40HP Engine - Class 2D Survey for (4) Persons. Condition: Excellent.
- DP3031 **4.4M x 8.0M M & Q Barge:** Complete with Open Cabin. Condition: Good.
- DP3030 **1000 TON "The Jindalee" Hopper Barge:** 49m Long x 12m Wide - 2 x 500 Ton Hoppers. Condition: Good.
- DP3029 **8 x 6 Mudcat Dredge:** Model MC-915 - Complete with 8 x 6 Clyde Morris Pump, 6-71 GM Diesel Motor & Auger Style Cutting Head. Condition: Good.
- DP3027 **8 x 6 FGH Newman Dredge:** Suction Style - 8/6 FGH Warman Pump - Iveco Marine Engine - Winch Propelled. Condition: Very Good.
- DP3022 **10 x 8 SGH Dredge:** Cutter Suction - 10/8 SGH Warman Pump - K19 Cummins - Winch propelled. Condition: Fully Refurbished.
- DP3015 **Dredge Anchor:** 2200 Long x 1500 Wide x 900 High. Weight (approx) 2.5T.

ELECTRICAL SWITCHBOARDS & COMPONENTS

- EB3087 **630 AMP Eaton Holec Ring Main Unit:** 24 KV - Complete with Container Room. Condition: Very Good.
- EB3083 **630 AMP ABB Ring Main Unit:** Type 3 x Fuse Switch - 200 Amp. Condition: As New.
- EB3082 **YSF6 Yorkshire Circuit Breaker:** 12KV - 1250 Amps - 5 Units Available. Condition: Excellent.
- EB3081 **12 KV Lucy RMU:** 2 x 200 Amp Transfer Feeds - 630 Amp RM Switch. Condition: Very Good.
- EB3079 **2500 AMP Integra Switchboard:** Current 2500 Amp - 415 Volts. Condition: As New.

[FOR FULL STOCK LIST & PHOTOGRAPHS SEE WEBSITE](#)

- EB3078 **2500 AMP Integra Switchboard:** Current 2500 Amp - 415 Volts. Condition: As New.
- EB3077 **1600 AMP MC Switchboard:** Current 1600 Amp - Voltage 240/415. Condition: Very Good.
- EB3076 **2000 AMP RL Switchboard:** Current 2000 Amp - Voltage 415. Condition: Excellent.
- EB3074 **66 KV GEC Alstom Circuit Breaker:** 2000 Amp - FXT9 - Complete with Controller. Condition: Very Good.
- EB3072 **3200 AMP ABB Circuit Breaker:** Sace E3N32 - 690 Volts - Complete with Enclosure. Condition: Very Good.
- EB3071 **1250 AMP Mechanical Services DB Board:** 1000V - 1250 Amp Incoming Circuit Breaker - 5 x 400 Amp Outgoing Complete with Galvanised Frame. Condition: Very Good.
- EB3069 **RM6 Schneider Ring Main Unit:** 12 KV - 630 Amp. Condition: New / Unused.
- EB3063 **630 AMP ABB Ring Main Unit:** Type: CCV - 24 KV. Condition: As New.
- EB3062 **6.6 KV ABB/IGRANIC Switch:** 6600 Volts Isolating Switch. Condition: Very Good.
- EB3058 **630 AMP NGK Stanger Gas Switch:** 12KV - Manually Operated - Type EGS. Condition: Unused.
- EB3056 **22 KV ABB Metering Panel:** Complete with 100/200-5 CT's. Condition: Excellent.
- EB3054 **160 AMP Merlin Gerin Distribution Board:** 160 Amp Main Circuit Breaker.
- EB3052 **250 AMP Merlin Gerin Distribution Board:** Empty Board - 1200 x 580 x 230.
- EB3047 **1600 AMP Terasaki Electric Air Circuit Breaker:** Model AT16 Condition: Excellent.
- EB3045 **1250 AMP Merlin Gerin Circuit Breaker:** Master Pact M12 H1. Condition: Excellent.
- EB3043 **630 AMP ABB Ring Main Unit:** Type - SDAF143 - 3 Way - 12 KV. Condition: Very Good.
- EB3041 **800 AMP Reyrolle Circuit Breaker:** Rated 12KV - 25 KA. Condition: Unused.
- EB3040 **800 AMP Reyrolle Circuit Breaker:** Rated 12 KV - 25 KA. Condition: Unused.
- EB3039 **800 AMP Reyrolle Circuit Breaker:** Rated 12 KV - 25 KA. Condition: Unused.
- EB3033 **400 AMP Merlin Gerin Fused Contactor:** 3.6 KV Rated. Condition: Very Good.
- EB3026 **Elden Distribution Board:** 1000 Volt - 2 x 400 Amp Circuit Breakers - 2 x 160 Amp Circuit Breakers. Condition: Good.

- EB3024 **YSF6 Yorkshire Circuit Breaker:** 12 KV - 630 Amp - 9 Units Available. Condition: Excellent.
- EB3022 **RM 6 Merlin Gerin Ring Main Unit:** 12 KV - 630 Amps - Rated S/C Current 25 KA. SF6 Insulated - Four Fuse Switches. Condition: New.
- EB3016 **630 AMP ABB Circuit Breaker:** Type RVC 3.6 / 7.2 KV - Fitted with Midos MCGC Overcurrent & Earth Fault Relay. Condition: New.
- EB3014 **200 AMP Terasaki Circuit Breaker:** Moulded Case - Type AC - 660 Volts - Model TO-225BA - Complete with Trip Button. Condition: Good.
- EB3006 **3000 AMP Nilsen Air Circuit Breaker:** NAB1/31D.

TRANSFORMERS

- EL3365 **1000 KVA M & Q Transformer:** 1000 Volts to 415 Volts - YNyn0
- EL3363 **500 KVA M & Q Transformer:** 1000 Volts to 415 Volts - YNyn0
- EL3362 **1500 KVA M & Q Transformer:** 11000 Volts to 1000 Volts - Dyn11.
- EL3361 **1250 KVA Newton Transformer:** 11000 to 400 Volts - Dyn11.
- EL3358 **3000 KVA Alstom Transformer:** 66000 to 11000 Volts - Dyn11.
- EL3357 **750 KVA Tyree Kiosk Transformer:** 11000 Volts to 433 Volts - Dyn11 - Complete with HV & LV Fuses.
- EL3356 **10,000 KVA Wilson Transformer:** 22000 to 6600 Volts - Dyn11.
- EL3355 **1250 KVA Etel Transformer:** 415 to 11000 Volts - YNyn0.
- EL3353 **1000 KVA ABB / Amp Control Substation:** 22000 to 1000 Volts - Complete with Skid Base & Form 4 1000 Volt End.
- EL3352 **5000 KVA Tyree Transformer:** 22000 to 6600 Volts - Dyn11
- EL3351 **1250 KVA Etel Transformer:** 6600 to 415 Volts - Dyn11.
- EL3349 **1600 KVA Etel Transformer:** 6600 to 415 Volts - Dyn11.
- EL3347 **1250 KVA Trafo Electro Transformer:** 22000 to 415 Volts - Dyn11 - Complete with LV Switchgear.
- EL3345 **750 KVA Wilson Transformer:** 3300 to 433 Volts - Dyn11.
- EL3344 **1750 KVA Schneider Transformer:** 22000 to 433 Volts - Dyn11.
- EL3343 **500 AMP Schneider Earth Transformer:** 22000 Volts - ZN.
- EL3342 **1000 KVA Schneider Transformer:** 22000 to 433 Volts - Dyn11.



EB3024: YSF6 Yorkshire Circuit Breaker: 12KV - 630 Amps
- 9 Units Available. Condition: Excellent.



**EL3366: 1000 KVA
M & Q Transformer:** 1000 Volts
to 415 Volts - Yyn0.



**EL3356: 10000 KVA Wilson
Transformer:** 22000 to 6600 Volts
- Dyn11.



**EL3347: 1250 KVA Trafo Electro
Transformer:** 22000 to 415 Volts
- Dyn11 Complete with
LV Switchgear.



**EL3344: 1750 KVA Schneider
Transformer:** 22000 to 433 Volts
- Dyn11.



**EL3333: 1500 KVA ABB
Transformer:** 11000 to 433 Volts
- Dyn11.



**EL3330: 2500 KVA Alstom
Transformer:** 11000 to 433 Volts
- Dyn11.

- EL3340 **1000 KVA Tyree Transformer:** 11000 to 433 Volts - Dyn11.
- EL3338 **1000 KVA Aset Transformer:** 11000 to 433 Volts - Dyn11.
- EL3336 **1500 KVA ABB Transformer:** 11000 to 433 Volts - Dyn11.
- EL3332 **2500 KVA Alstom Transformer:** 11000 to 433 Volts - Dyn11.
- EL3328 **1000 KVA Sungjin Transformer:** 11000 to 1100 Volts
- Dyn11.
- EL3327 **15,000 KVA ABB Transformer:** 33000 to 11000 Volts
- Dyn11 - Complete with OLTC.
- EL3325 **1500 KVA ABB Transformer:** 11000 to 433 Volts - Dyn11.
- EL3321 **2000 KVA Westralian Transformer:** 6600 to 433 Volts
- Dyn11.
- EL3320 **250 KVA West Elect Substation:** 1000 to 415 Volts - YNyn0
- Complete with HV & LV Ends & Skid Base.
- EL3316 **300 KVA Wilson Transformer:** 1000 to 415 Volts - Dyn11.
- EL3314 **4000 KVA Sycon Sub Station:** 22000 to 433 Volts - Step
Up / Step Down - Complete with HV & LV Switchgear.
- EL3313 **4000 KVA Sycon Sub Station:** 22000 to 433 Volts - Step
Up / Step Down - Complete with HV & LV Switchgear.
- EL3312 **550 KVA Westinghouse Transformer:** 11000 to 1050 Volts
- Dyn11.
- EL3309 **500 KVA ABB Transformer:** 11000 to 433 Volts - Dyn11.
- EL3307 **500 KVA Schneider Transformer:** 22000 to 433 Volts
- Dyn11.
- EL3306 **30 KVA Wilson Transformer:** 415 to 11000 Volts - Ynd11.
- EL3303 **750 KVA ABB Transformer:** 33000 to 433 Volts - Dyn11.
- EL3300 **2500 KVA EPE Transformer:** 11000 to 415 Volts - Dyn11
- Complete with Galvanised Skid & Mesh Fence.
- EL3299 **8000 KVA GEC ALSTHOM Transformer:** 22000 to 6600
Volts - Dyn11.
- EL3298 **6000 KVA Power Plant & Process Substation:** 66000 to
11000 Volts - Dyn11 - Complete with 66KV Circuit Breaker,
66KV CT's & 11 LV Circuit Breaker.
- EL3297 **1500 KVA ABB Transformer:** 22000 to 433 Volts - Dyn11.
- EL3289 **1600 KVA Schneider Transformer:** 11000 to 415 Volts
- Dyn11.
- EL3283 **1000 KVA Transformer:** 11000 to 415 Volts - Dyn11.
- EL3278 **600 KVA Galaxy Transformers Sub Station:** 11000/6600 to
1000 Volts - Dyn11 yn11.



EL3327: 15000 KVA ABB Transformer: 33000 to 11000 Volts
- Dyn11 Complete with OLTC.



EL3289: 1600 KVA Schneider Transformer: 11000 to 415 Volts
- Dyn11.



EL3283: 1000 KVA Transformer:
11000 to 415 Volts - Dyn11.



EL3262: 2500 KVA Aset Kiosk Transformer: 22000 to 433 Volts
- Dyn11.



EL3258: 750 KVA ABB Kiosk Transformer: 11000 to 433 Volts - Dyn11
Complete with HV Switch & LV Fuses.



EL3178: 1500 KVA Wilson Transformer: 22000 / 11000 to 6600 Volts - Dyn11.



EL3156: 1500 KVA ABB Transformer: 11000 to 433 Volts
- Dyn1 - Dry Type.

- EL3277 **15,000 KVA Westinghouse Transformer:** 66000 to 11000 Volts - Dyn - Complete with OLTC.
- EL3275 **700 KVA Rutherford Power Sub Station:** 11000 to 1000 Volts - Dyn11 - Complete with HV & LV Switch Gear and Galvanised Skid Base.
- EL3274 **1500 KVA Cneke Kiosk Transformer:** 11000 to 415 Volts - Dyn11 - Dry Type - Complete with HV Switch & LV Circuit Breaker.
- EL3268 **300 KVA Wilson Substation:** 11000 / 6600 to 433 Volts - Dyn11 - Complete with Skid Base.
- EL3267 **400 KVA Schneider Transformer:** 11000 to 433 Volts - Dyn11 - Dry Type.
- EL3265 **1500 KVA Wilson Transformer:** 22000 to 3300 Volts - Dyn11.
- EL3262 **2500 KVA Aset Kiosk Transformer:** 22000 to 433 Volts - Dyn11.
- EL3261 **750 KVA ABB Kiosk Transformer:** 11000 to 433 Volts - Dyn11.
- EL3259 **200 KVA ABB Kiosk Transformer:** 11000 to 433 Volts - Dyn11 - Complete with LV Fuses.
- EL3258 **750 KVA ABB Kiosk Transformer:** 11000 to 433 Volts - Dyn11 - Complete with HV Switch & LV Fuses.
- EL3256 **300 KVA Universal Substation:** 1000 to 415 Volts - Dyn11 - Complete with Skid Base.
- EL3248 **1000 KVA Tyree Transformer:** 11000 to 433 Volts - Dyn11.
- EL3239 **2000 KVA Wilson Kiosk Transformer:** 11000 to 433 Volts - Dyn11.
- EL3223 **315 KVA ABB Transformer:** 11000 to 433 Volts - Dyn11 - Pole Mount.
- EL3219 **12,500 KVA Wilson Transformer:** 66000 to 6600 Volts - Complete with OLTC - Dyn1.
- EL3199 **2000 KVA Aset Transformer:** 22000 to 433 Volts - 4Dyn11.
- EL3168 **1750 KVA GEC Transformer:** 11000 to 433 Volts - Dyn11.
- EL3155 **1500 KVA ABB Transformer:** 11000 to 430 Volts - Dyn1 - Dry Type.
- EL3150 **3000 KVA Wilson Transformer:** 33000 to 6600 Volts - Dyn1.
- EL3149 **3450 KVA Trafo Union Transformer:** 11000 to 720 Volts - Dy5Ddo.
- EL3145 **1000 KVA Westralian Transformer:** 33000 to 3300 Volts - Dyn1.
- EL3133 **200 KVA Westralian Transformer:** 11000 to 440 Volts - Dyn1 - Pole Mount.
- EL312 **2500 KVA Westralian Transformer:** 3300 to 415 Volts - Dyn11.

ELECTRIC MOTORS – SQUIRREL CAGE

2 POLE

| Code | Size | Make | RPM | Remarks |
|--------|---------|---------|------|--------------|
| EM3702 | 15 KW | POPE | 2950 | - TEFC |
| EM4292 | 22 KW | TECO | 2940 | - TEFC |
| EM3969 | 22 KW | ASEA | 2940 | - TEFC |
| EM4354 | 30 KW | TECO | 2955 | - TEFC |
| EM3506 | 37 KW | MEZ | 2975 | - TEFC |
| EM4488 | 55 KW | WEG | 2965 | - TEFC |
| EM4417 | 90 KW | WEG | 2980 | - TEFC |
| EM3133 | 110 KW | NEWMANN | 2870 | - TEFC |
| EM4241 | 132 KW | POPE | 2980 | - TEFC |
| EM3849 | 150 KW | TECO | 2976 | - TEFC |
| EM3748 | 160 KW | POPE | 2987 | - TEFC |
| EM4198 | 200 KW | TOSHIBA | 2980 | - TEFC |
| EM4400 | 200 KW | TOSHIBA | 2960 | - TEFC |
| EM3550 | 220 KW | TOSHIBA | 2980 | - TEFC |
| EM3839 | 250 KW | POPE | 2985 | - TEFC |
| EM3569 | 320 KW | TOSHIBA | 2970 | - 3300 VOLTS |
| EM4232 | 1570 KW | L & S | 2970 | - 6600 VOLTS |

4 POLE

| Code | Size | Make | RPM | Remarks |
|--------|--------|----------------|------|--------------|
| EM3872 | 30 KW | TOSHIBA | 1460 | - TEFC |
| EM3450 | 30 KW | WEG | 1465 | - TEFC |
| EM4395 | 37 KW | WEG | 1480 | - TEFC |
| EM4509 | 45 KW | CMG | 1480 | - TEFC |
| EM4513 | 45 KW | CMG | 1480 | - TEFC |
| EM4366 | 55 KW | POPE | 1475 | - TEFC |
| EM4357 | 55 KW | TECO | 1480 | - TEFC |
| EM3874 | 75 KW | BROOK CROMPTON | 1475 | - TEFC |
| EM4440 | 75 KW | WEG | 1475 | - TEFC |
| EM4483 | 90 KW | TECO | 1480 | - TEFC |
| EM4468 | 90 KW | POPE | 1480 | - TEFC |
| EM4381 | 110 KW | TECO | 1482 | - TEFC |
| EM3887 | 110 KW | TOSHIBA | 1470 | - TEFC |
| EM4193 | 132 KW | TECO | 1480 | - TEFC |
| EM4448 | 132 KW | WEG | 1485 | - TEFC |
| EM3346 | 150 KW | TOSHIBA | 1485 | - 1000 VOLTS |
| EM4110 | 150 KW | POPE | 1486 | - TEFC |

4 Pole Electric Motors - Squirrel Cage Continued

| Code | Size | Make | RPM | Remarks |
|--------|---------|---------|------|------------------------|
| EM4444 | 160 KW | WEG | 1480 | - TEFC |
| EM4445 | 160 KW | WEG | 1485 | - TEFC |
| EM4494 | 185 KW | TOSHIBA | 1480 | - TEFC |
| EM4239 | 185 KW | TOSHIBA | 1480 | - TEFC |
| EM4470 | 200 KW | POPE | 1485 | - TEFC |
| EM3218 | 210 KW | TOSHIBA | 1475 | - 6600 VOLTS |
| EM4222 | 220 KW | TOSHIBA | 1480 | - TEFC |
| EM4181 | 220 KW | TECO | 1475 | - TEFC |
| EM3354 | 225 KW | HITACHI | 1470 | - 6600 VOLTS |
| EM4443 | 250 KW | TOSHIBA | 1480 | - TEFC |
| EM4089 | 280 KW | POPE | 1485 | - TEFC |
| EM4090 | 280 KW | POPE | 1485 | - TEFC |
| EM4474 | 300 KW | TOSHIBA | 1480 | - 3300 VOLTS |
| EM4484 | 315 KW | CMG | 1490 | - TEFC |
| EM4394 | 335 KW | SIEMENS | 1478 | - 6600 VOLTS |
| EM4234 | 350 KW | TOSHIBA | 1480 | - 3300 VOLTS |
| EM4478 | 350 KW | TOSHIBA | 1485 | - 6600 VOLTS |
| EM4454 | 355 KW | WEG | 1484 | - TEFC |
| EM4472 | 400 KW | POPE | 1490 | - TEFC |
| EM3989 | 450 KW | TECO | 1485 | - 6600 VOLTS |
| EM3838 | 450 KW | TECO | 1480 | - TEFC |
| EM3741 | 500 KW | ABB | 1480 | - TEFC |
| EM4321 | 500 KW | TECO | 1480 | - 3300 VOLTS |
| EM4482 | 560 KW | TOSHIBA | 1475 | - 3300 VOLTS |
| EM4399 | 600 KW | TECO | 1485 | - 3300 VOLTS - CACA |
| EM4475 | 630 KW | TOSHIBA | 1490 | - 6600 VOLTS |
| EM4182 | 710 KW | SIEMENS | 1485 | - 6600 VOLTS |
| EM4432 | 750 KW | TOSHIBA | 1480 | - 3300 VOLTS |
| EM4364 | 760 KW | SIEMENS | 1490 | - 6600 VOLTS |
| EM4197 | 800 KW | TOSHIBA | 1480 | - 3300 VOLTS |
| EM4332 | 1100 KW | TOSHIBA | 1485 | - 3300 VOLTS |



EM4354: 30 KW 2 Pole Teco Electric Motor: 2955 RPM - TEFC.

FOR FULL STOCK LIST & PHOTOGRAPHS SEE WEBSITE

FOR FULL STOCK LIST & PHOTOGRAPHS SEE WEBSITE

6 POLE

| Code | Size | Make | RPM | Remarks |
|--------|---------|---------|-----|--------------|
| EM3266 | 30 KW | WEG | 980 | - TEFC |
| EM4360 | 55 KW | TECO | 975 | - TEFC |
| EM4405 | 75 KW | TECO | 980 | - TEFC |
| EM4480 | 75 KW | TECO | 984 | - TEFC |
| EM4346 | 90 KW | POPE | 986 | - TEFC |
| EM3272 | 90 KW | TECO | 978 | - TEFC |
| EM4501 | 110 KW | TECO | 975 | - TEFC |
| EM3258 | 110 KW | TECO | 980 | - TEFC |
| EM3749 | 132 KW | POPE | 990 | - TEFC |
| EM4324 | 150 KW | POPE | 985 | - TEFC |
| EM4309 | 160 KW | CMG | 989 | - TEFC |
| EM4486 | 185 KW | WEG | 990 | - TEFC |
| EM4347 | 200 KW | POPE | 970 | - TEFC |
| EM4160 | 220 KW | TECO | 989 | - 3300 VOLTS |
| EM4301 | 225 KW | POPE | 985 | - TEFC |
| EM4463 | 250 KW | TOSHIBA | 985 | - TEFC |
| EM4128 | 300 KW | TECO | 986 | - 3300 VOLTS |
| EM4420 | 315 KW | WEG | 989 | - 690 VOLTS |
| EM3353 | 355 KW | HITACHI | 985 | - 3300 VOLTS |
| EM4412 | 355 KW | TECO | 983 | - TEFC |
| EM4431 | 400 KW | WEG | 989 | - TEFC |
| EM3920 | 450 KW | TECO | 987 | - 3300 VOLTS |
| EM4409 | 500 KW | TOSHIBA | 987 | - 415 VOLTS |
| EM4408 | 500 KW | TOSHIBA | 987 | - 415 VOLTS |
| EM4365 | 550 KW | WEG | 993 | - 3300 VOLTS |
| EM4430 | 630 KW | POPE | 990 | - 3300 VOLTS |
| EM3554 | 1400 KW | TOSHIBA | 985 | - CACA |
| EM4416 | 2000 KW | SIEMENS | 991 | - 6600 VOLTS |
| EM3924 | 2500 KW | L.S. | 990 | - 6600 VOLTS |



**ER3126: 1000 KW 6 Pole Toshiba
Slipring Electric Motor: 985 RPM
- CACA.**



**EM4419: 90 KW 2 Pole Weg
Electric Motor: 2980 RPM
- TEFC.**



**EM4507: 45 KW 4 Pole CMG
Electric Motor: 1480 RPM
- TEFC.**



**EM4496: 90 KW 4 Pole Teco
Electric Motor: 1480 RPM
- Foot/Flange.**



**EM4469: 200 KW 4 Pole
Toshiba Electric Motor:
1480 RPM - TEFC.**



**EM4415: 75 KW 6 Pole Teco
Electric Motor: 980 RPM
- TEFC.**



**EM4430: 630 KW 6 Pole Pope
Electric Motor: 990 RPM
- 3300 Volts.**



**ER3130: 400 KW 4 Pole ABB
Electric Motor: 1480 RPM
- TEFC.**



**ER3138: 800 KW 6 Pole
Toshiba Electric Motor:
985 RPM - 6600 Volts.**

FOR FULL STOCK LIST & PHOTOGRAPHS SEE WEBSITE

8 POLE

| Code | Size | Make | RPM | Remarks |
|--------|--------|---------|-----|--------------|
| EM3455 | 30 KW | POPE | 730 | - TEFC |
| EM3453 | 37 KW | C.P. | 730 | - TEFC |
| EM4161 | 45 KW | TECO | 725 | - TEFC |
| EM4359 | 75 KW | TECO | 750 | - TEFC |
| EM3543 | 90 KW | SIEMENS | 738 | - TEFC |
| EM3726 | 150 KW | POPE | 745 | - TEFC |
| EM4153 | 185 KW | TECO | 735 | - TEFC |
| EM4164 | 280 KW | TECO | 735 | - TEFC |
| EM3722 | 355 KW | ABB | 744 | - 3300 VOLTS |
| EM4100 | 410 KW | TOSHIBA | 741 | - 3300 VOLTS |
| EM3738 | 485 KW | L & S | 740 | - 3300 VOLTS |

10 POLE

| Code | Size | Make | RPM | Remarks |
|--------|--------|---------|-----|--------------|
| EM4186 | 55 KW | GEC | 585 | - TEFC |
| EM3657 | 75 KW | SIEMENS | 585 | - TEFC |
| EM3656 | 75 KW | SIEMENS | 585 | - TEFC |
| EM3891 | 76 KW | TECO | 589 | - TEFC |
| EM3027 | 110 KW | AEI | 580 | - TEFC |
| EM4250 | 150 KW | TECO | 588 | - TEFC |
| EM4196 | 200 KW | POPE | 595 | - TEFC |
| EM4165 | 220 KW | SHINKO | 590 | - 3300 VOLTS |
| EM3803 | 270 KW | POPE | 594 | - TEFC |
| EM3321 | 355 KW | SHINKO | 590 | - 3300 VOLTS |

12 POLE

| Code | Size | Make | RPM | Remarks |
|--------|---------|---------|-----|--------------|
| EM3572 | 150 KW | AEI | 490 | - D/PROOF |
| EM4503 | 300 KW | TECO | 485 | - TEFC |
| EM4504 | 300 KW | TECO | 485 | - TEFC |
| EM3324 | 315 KW | SHINKO | 490 | - CACA |
| EM3813 | 325 KW | HITACHI | 490 | - 3300 VOLTS |
| EM4452 | 1900 KW | TECO | 498 | - 3300 VOLTS |

ELECTRIC MOTORS - SLIPRING

2 POLE

| Code | Size | Make | RPM | Remarks |
|--------|-------|------|------|---------|
| ER3072 | 75 KW | LDC | 2960 | - TEFC |

4 POLE

| Code | Size | Make | RPM | Remarks |
|--------|---------|---------|------|---------------|
| ER3051 | 18.5 KW | NEWMAN | 1465 | - DRIPROOF |
| ER3092 | 37 KW | SIEMENS | 1460 | - TEFC |
| ER3059 | 110 KW | TECO | 1475 | - TEFC |
| ER3080 | 185 KW | TECO | 1480 | - TEFC |
| ER3090 | 300 KW | SIEMENS | 1485 | - TEFC |
| ER3129 | 340 KW | ABB | 1490 | - TEFC |
| ER3130 | 400 KW | ABB | 1480 | - TEFC |
| ER3132 | 450 KW | TOSHIBA | 1480 | - TEFC |
| ER3109 | 450 KW | TOSHIBA | 1490 | - 6600 VOLTS |
| ER3094 | 450 KW | TOSHIBA | 1485 | - 3300 VOLTS |
| ER3074 | 500 KW | TOSHIBA | 1475 | - 415 VOLTS |
| ER3046 | 530 KW | LSE | 1485 | - 6600 VOLTS |
| ER3117 | 630 KW | SIEMENS | 1486 | - 11000 VOLTS |
| ER3102 | 630 KW | TECO | 1488 | - TEFC |
| ER3127 | 700 KW | SIEMENS | 1488 | - 11000 VOLTS |
| ER3095 | 800 KW | TOSHIBA | 1480 | - 3300 VOLTS |
| ER3123 | 2100 KW | POPE | 1490 | - 11000 VOLTS |
| ER3104 | 4500 KW | SIEMENS | 1489 | - 11000 VOLTS |

6 POLE

| Code | Size | Make | RPM | Remarks |
|--------|---------|---------|-----|---------------|
| ER3136 | 110 KW | ASEA | 975 | - TEFC |
| ER3135 | 145 KW | ASEA | 990 | - TEFC |
| ER3014 | 300 KW | SIEMENS | 980 | - TEFC |
| ER3034 | 395 KW | C.P. | 960 | - D/PROOF |
| ER3122 | 520 KW | HITACHI | 985 | - 3300 VOLTS |
| ER3121 | 600 KW | HITACHI | 985 | - 3300 VOLTS |
| ER3138 | 800 KW | TOSHIBA | 985 | - 6600 VOLTS |
| ER3118 | 880 KW | TECO | 990 | - 6600 VOLTS |
| ER3126 | 1000 KW | TOSHIBA | 985 | - CACA |
| ER3134 | 1200 KW | TOSHIBA | 985 | - 6600 VOLTS |
| ER3125 | 1500 KW | TECO | 980 | - 3300 VOLTS |
| ER3137 | 7000 KW | TOSHIBA | 990 | - 11000 VOLTS |

8 POLE

| Code | Size | Make | RPM | Remarks |
|--------|---------|---------|-----|---------------|
| ER3061 | 37 KW | BROOK | 725 | - TEFC |
| ER3082 | 132 KW | BRUSH | 735 | - D/PROOF |
| ER3128 | 375 KW | HYUNDAI | 735 | - 3300 VOLTS |
| ER3069 | 1500 KW | TOSHIBA | 740 | - 6600 VOLTS |
| ER3033 | 1620 KW | ASEA | 741 | - 6600 VOLTS |
| ER3114 | 3240 KW | ASEA | 740 | - 11000 VOLTS |

10 POLE

| Code | Size | Make | RPM | Remarks |
|--------|---------|------------|-----|---------------|
| ER3115 | 540 KW | MITSUBISHI | 585 | - 3300 VOLTS |
| ER3029 | 1225 KW | AEI | 590 | - 11000 VOLTS |
| ER3124 | 1855 KW | WEG | 591 | - 690 VOLTS |

12 POLE

| Code | Size | Make | RPM | Remarks |
|--------|--------|---------|-----|--------------|
| ER3053 | 520 KW | SIEMENS | 490 | - 6600 VOLTS |

ELECTRIC MOTORS - DC & OTHERS

- ES3045 **1706 KW Joliet DC Motor:** 650 RPM - 700 VOLTS.
Condition: Unused.
- ES3044 **267 KW ABB DC Motor:** 1031 RPM - 470 Volts.
- ES3043 **300 KW Toshiba DC Motor:** 1480 RPM - 480 Volts.
- ES3041 **150 KW Baldor Gear Motor:** 1750 RPM - 500 Volts.
- ES3033 **190 KW Toyo-Denki DC Motor:** 432 RPM - 480 Volts.
- ES3031 **15 KW ECC DC Motor:** 1750 RPM - 460 Arm Volts.
- ES3027 **250 KW Shinko DC Motor:** 1500 RPM - Type GN L315M 33F - 440 Volts.

ELECTRIC MOTOR STARTERS

- ET3050 **200 AMP ABB Starter Panel:** Consisting of 3 x 200 Amp RGBE 7.2 KV ABB Earthing Switches - Fitted with Stromberg Spam 110 Motor Protection Relay. Condition: New.
- ET3033 **650 HP Sprecher & Schuh Auto Transformer Starter:** 415 Volts - Heavy Duty - Complete with Push Button Stop/Start - Fully Enclosed.

ELECTRICAL - MISCELLANEOUS

- EZ3017 **400 KVAR ABB Power Factor Correction:** 415V - Complete with Circuit Breaker & Controller. Condition: As New.
- EZ3016 **400 KVAR ABB Power Factor Correction:** 415 Volts - Complete with Circuit Breaker & Controller. Condition: As New.
- EZ3015 **22 KV Couplerco Bolted Coupler:** 425 Amp - Aluminium Housing - 2 Units Available. Condition: Excellent.
- EZ3014 **500 KVAR ABB Power Factor Corr Unit:** 415 Volts - Complete with Circuit Breaker & Controller. Condition: As New.
- EZ3007 **1500 KVAR ABB Power Factor Correction:** Unit - 415V - 2 Units Available. Condition: Excellent.
- EZ3001 **55 KVA Emerson UPS:** Type AP7268 / 558.
- EZ3000 **24 KVAR Nokia Power Factor Correction:** Capacitors - 4 off - 338 Amps.

FANS AND BLOWERS

- FA3049 **110 KW Korfman/Ausminco Mine Vent Fan:** Twin 55 KW - 1000 Volts. Condition: Very Good.
- FA3048 **110 KW Dowunder Mining Underground Mine Fan:** 1000V - 2 Units Available - Galvanised. Condition: Very Good.
- FA3047 **55 KW Dowunder Mining Underground Mine Fan:** 1000V - Weg - 4 Pole Electric Motor - Galvanised. Condition: Very Good.
- FA3046 **1500 Cogemacoustic Vent Fan:** Complete with 110 KW 4 Pole Motor & Variable Intake Blades. Condition: Very Good.
- FA3045 **77M / MIN Aerzen Blower:** Type GM905 - Maximum Input 90 KW. Condition: Unused.
- FA3044 **80,000 CFM Howden/Wolf Mine Vent Fan:** Wolf 54.25 - 250 KW Drive. Rated 38 M/S @ 4 KPA. Condition: Very Good.
- FA3032 **800mm Hison Fans Axial Fan:** 1.5 KW - 940 RPM - Wall Mount. Condition: Good.
- FA3027 **780mm Richardson Fan:** Centrifugal - Fitted with 45 KW 4 Pole Motor - Maximum Capacity 8300 Litres/Second @ 3.1 KPA.
- FA3026 **1640 Wolf Fan:** Centrifugal - Fitted with 110 KW Motor - Capacity approximately 11,500 Litres/Second @ 4.5 KPA.
- FA3005 **1500 Fan:** Axial - 45 KW @ 975 RPM.



FA3049: 110 KW Korfman/Ausminco Mine Vent Fan: Twin 55 KW - 1000 Volts. Condition: Very Good.

FEEDERS

- FE3067 **1650 x 7000 Jaques Apron Feeder:** Complete with Twin Hydraulic Drives - New Pans Fitted. Condition: Good.
- FE3066 **1200 x 4000 Jaques Apron Feeder:** Complete with 11 KW Electro Mechanical Drive. Condition: Good.
- FE3065 **1500 x 12000 Bateman Kinhill Belt Feeder:** Complete with 30 KW Planetary Drive. Condition: Excellent.
- FE3061 **1500 x 7500 Bateman Kinhill Belt Feeder:** Complete with 30 KW Planetary Drive. Condition: Excellent.
- FE3060 **1000 x 4875 Trio Vibrating Grizzly Feeder:** Complete with Drive, Spring & Mounts. Condition: Unused.
- FE3059 **750 x 4800 Belt Feeder:** Complete with 2.2 KW Drive & Skid Base. Condition: Good.
- FE3055 **2000 x 18000 RCR Tomlinson Apron Feeder:** Complete with Twin Ma800 Hagglund Drives. Condition: Very Good.
- FE3054 **2400 x 7000 Minspec Apron Feeder:** 30 KW Planetary Drive - Spill Conveyor. Condition: Unused.
- FE3049 **1700x2400 Nordberg Vibrating Grizzly:** 75mm Grizzly Gap - Complete with 11 KW Drive. Condition: Very Good.
- FE3047 **F212 Syntron Vibrating Feeder:** Tray Size 280 x 1000 - Complete with Controller - 2 Units Available. Condition: Very Good.
- FE3044 **500 TPH Stamler Reclaim Feeder:** Model BF-7H-0-64S - Complete with Hydraulics and Spares. Condition: Excellent.
- FE3041 **750 x 1800 Syntron Vibratory Feeder:** Twin Invicta Drives.
- FE3040 **1800 x 4900 Allis Chalmers Vibrating Feeder:** Fitted with Grizzly - Complete with Drive, Base Frame and ROM Hopper. Condition: Excellent.
- FE3037 **FHV 45 Syntron Vibrating Feeder:**
- FE3006 **F56 Syntron Vibrating Feeder:**



FE3054: 2400 x 7000 Minspec Apron Feeder: 30 KW Planetary Drive - Spill Conveyor. Condition: Unused.



FE3061: 1500 x 7500 Bateman Kinhill Belt Feeder: Complete with 30 KW Planetary Drive. Condition: Excellent.

[FOR FULL STOCK LIST & PHOTOGRAPHS SEE WEBSITE](#)

GEAR BOXES

| Code | Size | Make | Description |
|--------|--------|-------------|--|
| GB3350 | 990 KW | David Brown | Model H1-355 - Ratio 5.823 to 1. |
| GB3304 | 700 KW | David Brown | H1-250 - Ratio 3.01 to 1. |
| GB3315 | 638 KW | David Brown | HC 22-28 Helical - Ratio 27.33 to 1. |
| GB3303 | 620 KW | David Brown | H1-250 - Ratio 3.05 to 1. |
| GB3352 | 475 KW | David Brown | H1-180 - Ratio 2.03 to 1. |
| GB3265 | 218 KW | Hansen | NE14ARN - Bevel Helical - Ratio 2 to 1. |
| GB3410 | 165 KW | Flender | Model KZA 320 - Ratio 78 to 1. |
| GB3399 | 91 KW | Hansen | Model RHB21AN - Ratio 12.5 to 1. |
| GB3365 | 78 KW | Hanson | Ratio 24.55 to 1 - Helical - Type D621CT-BN-25. |
| GB3361 | 55 KW | Flender | Bevel Helical - Model KA160PX250 - Ratio 21.06 to 1. |
| GB3364 | 55 KW | Rossi | Ratio 62.5 to 1 - Triple Reduction. |
| GB3330 | 37 KW | Flender | Triple Helical (Model S20-225) - Ratio 19.2 to 1. |
| GB3319 | 35 KW | David Brown | MH-1F - Helical - RATIO 7.13 to 1. |
| GB3254 | 22 KW | Flender | Right Angle - KA 140A - Ratio 29.65 to 1. |
| GB3137 | 24" | Morse | Worm & Wheel - M24 - Ratio 50 to 1. |
| GB3276 | 20" | Radicon | Worm & Wheel - BU20 - Ratio 14.75 to 1. |
| GB3273 | 20" | Radicon | Worm & Wheel - BU20 - Ratio 12.75 to 1. |
| GB3272 | 20" | Radicon | Worm & Wheel - BU20 - Ratio 25.5 to 1. |
| GB3349 | 17" | Holroyd | Worm & Wheel - HU17 - Ratio 60 to 1. |
| GB3362 | 17" | Radicon | Worm & Wheel - Ratio 20.33 to 1. |
| GB3035 | 17" | Richardson | Worm & Wheel - Ratio 15.3 to 1. |
| GB3386 | 16" | Morse | Worm & Wheel - Ratio 177 to 1. |
| GB3056 | 16" | Borg Warner | Worm & Wheel - Ratio 15 to 1. |
| GB3409 | 14" | Radicon | Worm & Wheel - MBU14 - Ratio 40:1. |
| GB3393 | 14" | Radicon | Worm & Wheel - 14 RHU - Ratio 19.66 to 1. |
| GB3105 | 14" | Maximum | Worm & Wheel - M14 - Ratio 15 to 1. |
| GB3170 | 14" | Holroyd | Worm & Wheel - Ratio 60 to 1. |
| GB3336 | 12" | Radicon | Worm & Wheel - 12 RHU - Ratio 50 to 1. |
| GB3397 | 12" | Radicon | Worm & Wheel - BU12 - Ratio 20 to 1 |
| GB3045 | 12" | Richardson | Worm & Wheel - 12 RHU - Ratio 40 to 1. |
| GB3239 | 12" | Maximum | Worm & Wheel - Ratio 30 to 1. |
| GB3408 | 10" | Radicon | Worm & Wheel - BU10 - Ratio 40 to 1. |
| GB3292 | 10" | Maximum | Worm & Wheel - MD10 - Ratio 500 to 1 |
| GB3379 | 10" | Radicon | Worm & Wheel - MBU10 - Ratio 60 to 1. |
| GB3414 | 10" | Radicon | Worm & Wheel - MBU10 - Ratio 30 to 1. |
| GB3340 | 9" | Crofts | Worm & Wheel - 9U - Ratio 15 to 1. |
| GB3011 | 9" | Radicon | Vertical down - BU900 - Ratio 70 to 1. |
| GB3259 | 8" | Holroyd | Worm & Wheel - HU8 - Ratio 25 to 1. |
| GB3249 | 8" | Morse | Worm & Wheel - Ratio 40 to 1. |
| GB3178 | 8" | G & H | Worm & Wheel - Ratio 7.5 to 1. |
| GB3348 | 7.5 KW | Sew | Inline - Ratio 32.05 to 1. |
| GB3248 | 7" | Radicon | Worm & Wheel - Ratio 7.5 to 1. |
| GB3369 | 7" | Radicon | Worm & Wheel - 7 RHU - Ratio 20.5 to 1. |

[FOR FULL STOCK LIST & PHOTOGRAPHS SEE WEBSITE](#)

| Code | Size | Make | Description |
|--------|--------|--------------|--|
| GB3012 | 6" | Radicon | Worm & Wheel - BU600 - Ratio 15 to 1. |
| GB3411 | 6" | Morse | Worm & Wheel - Ratio 40 to 1. |
| GB3347 | 5" | Maximum | Worm & Wheel - M05 - (Overdriven) - Ratio 10 to 1. |
| GB3191 | 5" | Maximum | Worm & Wheel - M5 - Ratio 15 to 1. |
| GB3219 | 5" | Radicon | Vertical Up - Ratio 60 to 1. |
| GB3179 | 4" | Maximum | Worm & Wheel - M4 - Ratio 20 to 1. |
| GB3223 | 4" | Radicon | Worm & Wheel - RHU - Ratio 50 to 1. |
| GB3227 | 4" | Maximum | Worm & Wheel - M4 - Ratio 50 to 1. |
| GB3187 | 3.5" | Maximum | Worm & Wheel - M3.5 - Ratio 5 to 1. |
| GB3210 | 3" | Borg Warner | Worm & Wheel - Ratio 10.25 to 1 - Overdriven. |
| GB3218 | 3" | Wickham & Co | Worm & Wheel - Ratio 19 to 1. |
| GB3278 | TXTM | Dodge | Ratio 24.65 to 1. |
| GB3202 | TD6 | Fenner | Ratio 15.16 to 1. |
| GB3345 | AU1250 | Radicon | Ratio 5 to 1. |
| GB3356 | H | Fenner | Ratio 20 to 1 |
| GB3167 | TV72 | Sala | Ratio 14.83 to 1. |
| GB3166 | H | Fenner | Ratio 13 to 1. |
| GB3165 | F | Fenner | Ratio 20 to 1. |
| GB3235 | H | Fenner | Ratio 20 to 1. |
| GB3282 | H | Fenner | Ratio 13 to 1 |
| GB3308 | TV53 | Benzler | Ratio 65 to 1. |
| GB3359 | TV72 | Sala | Ratio 15 to 1. |
| GB3374 | F | Fenner | Ratio 13 to 1. |
| GB3388 | S | Fenner | Ratio 13 to 1 - Taper Grip Bore. |
| GB3398 | K | Fenner | Ratio 20 to 1 - Fitted with Anti Rollback. |
| GB3412 | J | Fenner | Ratio 20 to 1 |
| GB3309 | G | Fenner | Ratio 13 to 1 |
| GB3288 | TD7 | Fenner | Ratio 24.55 to 1. |
| GB3307 | G | Fenner | Ratio 20 to 1 |
| GB3305 | TV53 | Benzler | Ratio 65 to 1. |



GB3409: 14" Radicon
Gear Box: Worm & Wheel
- MBU14 - Ratio 40:1
Condition: Very Good.



LE3019: 8" x 5" Jaques
Laboratory Jaw Crusher:
Complete with Electric Motor
& Stand. Condition: Excellent.

FOR FULL STOCK LIST & PHOTOGRAPHS SEE WEBSITE

GEARED MOTORS

| Code | Size | Make | Description |
|--------|---------|---------------|-------------------------------|
| GM3197 | 30 KW | Sew | Output Speed 54 PRM |
| GM3110 | 22 KW | G & W | Output Speed 357 RPM |
| GM3169 | 18.5 KW | Bonfiglioli | Output Speed 106 RPM. |
| GM3167 | 18.5 KW | Bonfiglioli | Output Speed 42.5 RPM |
| GM3196 | 15 KW | Flender | Output Speed 21 RPM |
| GM3100 | 11 KW | Asea | Output Speed 320 RPM. |
| GM3207 | 11 KW | Weg / Flender | Output Speed 40 RPM. |
| GM3168 | 11 KW | Bonfiglioli | Output Speed 45 RPM |
| GM3061 | 10 HP | Barlow | Output Speed 100 RPM. |
| GM3198 | 7.5 KW | Flender | Output Speed 16.9 RPM |
| GM3155 | 7.5 KW | Sew | Output Speed 9 RPM |
| GM3157 | 7.5 KW | Flender | Output 28.5 RPM |
| GM3086 | 7.5 KW | Asea | Output Speed 145 RPM |
| GM3176 | 5.5 KW | Sew-Eurodrive | Output 148 RPM. |
| GM3175 | 5.5 KW | Fenner | Output 12 RPM - Flange Mount. |
| GM3188 | 4 KW | Sew-Eurodrive | Output Speed 100 RPM |
| GM3115 | 4 KW | Rossi | Output Speed 46 RPM |
| GM3160 | 3 KW | Bonfiglioli | Output Speed 36 RPM. |
| GM3194 | 2.2 KW | Brook/Bonfig | Output Speed 36 RPM |
| GM3125 | 1.5 KW | Reduspeed | Output Speed 29 RPM |
| GM3073 | 1.5 KW | Renold | Output Speed 39 RPM. |
| GM3209 | 1.5 KW | Mixtec | Output Speed 90 RPM |
| GM3145 | 1.1 KW | Sew | Output Speed 80 RPM |
| GM3085 | 1.1 KW | Sew | Output Speed 28 RPM |
| GM3039 | 1.1 KW | Reduspeed | Output Speed 100 RPM. |
| GM3018 | 1.1 KW | Weg | Output Speed 10 RPM. |

KILNS AND DRYERS

- KD3022 **2134 x 22860 Armstrong Holland Rotary Kiln:** Complete with Burner, Hood, Drive & Refractory. Condition: Unused.
- KD3021 **1470 x 7700 Rotary Dryer:** Complete with Frame & Drive. Condition: Good.
- KD3020 **1000 x 4200 Rotary Dryer:** Complete with Drive, Gas Burner & Skid Base. Condition: Unused.
- KD3019 **900 x 4500 Lockers Engineers Vibrating Fluid Bed Dryer:** Model B945/6 - Complete with Vibrating Screen/Feeder. Condition: Very Good.
- KD3018 **1800 x 7600 Rotary Dryer:** Complete with Drive & Feed Conveyor. Condition: Very Good.

FOR FULL STOCK LIST & PHOTOGRAPHS SEE WEBSITE

LABORATORY EQUIPMENT

- LE3025 **300 Wescone Lab Cone Crusher:** Model W300/2
- Minimum CSS 2mm. Condition: Very Good.
- LE3024 **Rocklabs Ring Mill:** Complete with (2) Bowls & Pucks.
Condition: Excellent.
- LE3023 **Almonte Core Sample Cutter:** Diamond Blade - Complete
with Core Guides. Condition: Very Good.
- LE3022 **300 Wescone Lab Cone Crusher:** Model W300-2
- Maximum Feed 50mm - Minimum CSS 2mm.
Condition: Unused.
- LE3021 **100 x 60 M & Q Lab Jaw Crusher:** Complete with Hopper,
Auto Feeder, Stand & Controller. Condition: New/Unused.
- LE3019 **8" x 5" Laboratory Jaw Crusher:** Complete with Electric
Motor & Stand. Condition: Excellent.
- LE3017 **Essa Micron Mill:** Unit is PLC Controlled - Complete with
Auto Sampling. Condition: As New.
- LE3016 **550 x 700 Steve Co Lab Ball Mill:** Complete with Water
Cooling, 60L of 12mm Ceramic Charge & Ceramic Liners.
Condition: Excellent.
- LE3014 **500 x 700 Lab Ball Mill:** Complete with Drive & Grate
Discharge. Condition: Excellent.
- LE3012 **3" x 3" Vangelder Laboratory Jaw Crusher:** Complete with
Electric Motor & Stand. Condition: Very Good.
- LE3008 **Jaymac Auto Clave:** Chamber is 250mm x 400mm - DPO
207 MPA @ 150 Deg Celsius. Condition: Good.
- LE3007 **Tabai Mfg Co Humidity Chamber:** Inside Dimensions 600W
x 850H x 800D - 2 KW Heater - Model PR-3E.
Condition: Excellent.

MAGNETS

- MG3111 **600mm M & Q Tramp Magnet:** Model MQ RCY-P65 -
Manual Clean. Condition: New.
- MG3107 **1200mm M & Q Electro Magnet:** Model MQ RCDF-12
- Self Cleaning Complete with Transformer Rectifier.
Condition: New.
- MG3106 **SE730 Eriez Electro Magnet:** Manual Cleaning - Complete
with Controller. Condition: Good.
- MG3105 **900mm Mitsubishi Tramp Magnet:** Permanent Magnet
- Electric - Self Cleaning. Condition: Overhauled.
- MG3102 **1400mm M & Q Electro Magnet:** Model MQ RCDF-14
- Self Cleaning - Complete with Transformer Rectifier.
Condition: New.

Magnets Continued

- MG3097 **800mm M & Q Electro Magnet:** Model MQ RCDF-8
- Self Cleaning - Complete with Transformer Rectifier.
Condition: New.
- MG3096 **1000mm M & Q Electro Magnet:** Model MQ RCDF-10
- Self Cleaning - Complete with Transformer Rectifier.
Condition: New.
- MG3094 **1200mm Mecal Electro Magnet:** Model LTG-120
- Self Cleaning - Complete with Transformer Rectifier.
Condition: Very Good.
- MG3093 **SE740 Eriez Electro Magnet:** Manual Cleaning - To suit up
to a 900mm Belt. Condition: Excellent.
- MG3092 **89 Dings Sturton-Gill Electro Magnet:** Model 890HSM
- Complete with Controller. Condition: Very Good.
- MG3090 **SE795 ETS Eriez Magnet:** Electro Magnet - Manual
Cleaning - To suit up to 1800mm Belt. Condition: Very Good.
- MG3089 **SE795 Eriez Magnet:** Electro Magnet - Manual Cleaning
- To suit up to 1800mm Belt. Condition: Very Good.
- MG3084 **SE745 Eriez Magnet:** Manual Cleaning - To suit up to 1050
Wide Belt. Condition: Very Good.
- MG3082 **44 UG Sturton Gill Magnet:** Underground Electro Magnet.
To suit up to 1050 Wide Belt. Condition: Very Good.
- MG3081 **800mm M & Q Tramp Magnet:** Model MQ RCY-C80 -
Permanent Self Cleaning - Hydraulic Drive. Condition: New.
- MG3080 **750 Eriez Magnetic Head Drum:** To suit 750mm wide
Conveyor. Condition: Unused.
- MG3079 **1600mm M & Q Electro Magnet:** Model MQ RCDF-16
- Self Cleaning - Complete with Transformer Rectifier.
Condition: New.
- MG3072 **600 BELT M & Q Tramp Magnet:** Permanent Suspended.
- MG3069 **600mm M & Q Electro Magnet:** Model MQ RCDF-6
- Complete with Transformer Rectifier. Condition: New.
- MG3067 **800 M & Q Electro Magnet:** Model MQ RCDE-8 - Complete
with Transformer Rectifier.
- MG3063 **600mm M & Q Electro Magnet:** Model MQ RCDE-6
- Complete with Transformer Rectifier. Condition: New.



MG3108: 600mm M & Q Tramp Magnet: Model MQ RCY-P65
- Manual Clean. Condition: New.



MG3092: 89 Dings Sturton-Gill Electro Magnet: Model 890HSM
- Complete with Controller.
Condition: Very Good.

[FOR FULL STOCK LIST & PHOTOGRAPHS SEE WEBSITE](#)

[FOR FULL STOCK LIST & PHOTOGRAPHS SEE WEBSITE](#)

MINING PROCESS

- MP3143 **914 x 2438 Eriez Wet Drum Mag Separator:** Complete with 4 KW Drive & Spare Drum. Condition: Very Good.
- MP3142 **ISP02 Gekko Inline Pressure Jig:** Inline Spinner - Complete with Controller. Condition: Excellent.
- MP3141 **MG7S Mineral Technologies Spirals:** Bank of 8 Spirals - Triple Start - 20 Banks Available. Condition: Very Good.
- MP3139 **BB 285 Rammer Hydraulic Rock Breaker:** Complete with 777 Hammer - 18.5 KW Power Pack & Platform with Handrails. Condition: As New.
- MP3138 **914 x 1000 Eriez Wet Drum Mag Separator:** Complete with Gear Motor Drive. Condition: Good.
- MP3135 **1200 x 1200 JWI Filter Press:** 39 Plate. Condition: Excellent.
- MP3134 **914 x 1900 Eriez Wet Drum Mag Separator:** Condition: Good.
- MP3132 **36" Goldfield Jig:** Single Round Jig - Complete with Drive. Condition: Unused.
- MP3129 **34M Eimco Thickener:** High Rate - Auto Rake Lift. Condition: As New.
- MP3126 **IPJ 2400 Gekko Inline Pressure Jig:** Complete with Controller. Condition: Very Good.
- MP3122 **1000 x 1000 Filter Press:** 39 Plate - Poly Plates - Complete with Hydraulic Open/Close, Auto De-caking, Discharge Conveyor & Control Panel. Condition: Very Good.
- MP3121 **30" CD Knelson / Consep Concentrator:** Centre Discharge - Complete with Electric Motor. Condition: Workshop Checked.
- MP3119 **Eriez Rare Earth Mag Roll Sep:** Model RE40-2 - Complete with Control Box. Condition: As New.
- MP3117 **HMD/Readings Induced MagRoll Separator:** Model IMRS 2-2-750. Condition: As New.
- MP3115 **KC-MD 7.5 Consep Hire Knelson Concentrator:** Complete with Vibrating Screen & Mobile Trolley. Condition: Excellent.
- MP3099 **42" x 42" Agitair Flotation Cells:** Bank of 8 Cells. Condition: Overhauled.
- MP3097 **LD4 Mineral Deposits Spirals:** Model: Reichert LD4 - Bank of 4 - 2 Sets Available. Condition: Good.
- MP3057 **1300 Humboldt Wedag Centrifuge:** Model HES 1300.1 - Fitted with 37 KW Drive.



MP3141: MG7S Mineral Technologies Spirals: Bank of 8 Spirals - Triple Start 20 Banks Available. Condition: Very Good.

FOR FULL STOCK LIST & PHOTOGRAPHS SEE WEBSITE



LE3022: 300 Wescone Lab Cone Crusher: Model W300-2
- Maximum Feed 50mm
- Minimum CSS 2mm.
Condition: Unused.



LE3017: Essa Micron Mill:
Unit is PLC Controlled -
Complete with Auto Sampling.
Condition: As New.



MP3142: ISP02 Gekko Inline Pressure Jig: Inline Spinner
- Complete with Controller.
Condition: Excellent.



MP3135: 1200 x 1200 JWI Filter Press: 39 Plate.
Condition: Excellent.



MP3126: IPJ2400 Gekko Inline Pressure Jig: Complete with Controller. Condition: Very Good.



MP3121: 30" CD Knelson / Consep Concentrator: Centre Discharge - Complete with Electric Motor.
Condition: Workshop Checked.



MX3040: 1200 x 3500 CRE Pug Mill: Complete with 75 KW Drive - Rated at 450 TPH.
Condition: Excellent.



MX3045: 2000 Litre Arenco Ribbon Mixer: 2400 Long x 1070 Wide x 1100 High - Stainless steel - Complete with 22 KW Drive Motor. Condition: Excellent.

MIXERS

- MX3045 **2000 Litre Arenco Ribbon Mixer:** 2400 Long x 1070 Wide x 1100 High - Stainless Steel - Complete with 22KW Drive Motor. Condition: Excellent.
- MX3040 **1200 x 3500 CRE Pug Mill:** Complete with 75 KW Drive - Rated at 450 TPH. Condition: Excellent.
- MX3039 **1500 LITRE Ribbon Mixer:** 1800 L x 900 W x 1000 H - 11 KW Drive.
- MX3036 **1200 x 3500 CRE Pug Mill:** 75 KW Drive - Model RP450. Condition: Excellent.
- MX3035 **75 Q10 Lightnin Mixer:** Ratio 38.2 to 1.
- MX3034 **77Q75 Lightnin Mixer:** Ratio 16.8 to 1. Condition: Very Good.
- MX3033 **880 Q75 Lightnin Mixer:** Ratio 25.6 to 1. Condition: Excellent.
- MX3032 **30" Mac Bro Muller Mixer:** Condition: As New.
- MX3031 **1000x1200x4000 Paddle Mixer:** Bottom Discharge.
- MX3029 **73Q Lightnin Mixer:** Ratio 25.6 to 1

PUMPS

- PU3609 **4/3 DAH Austral Slurry Pump:** Metal Lined - Metal Impeller - Metal Expeller Ring.
- PU3608 **40 PV SP-1200 Austral Sump Pump:** Complete with 7.5 KW IP66 Electric Motor.
- PU3606 **3 C-AHF Warman Froth Pump:** Rubber Lined - Metal Impeller - Gland Seal. Condition: Very Good.
- PU3604 **3 C-AHF Warman Froth Pump:** Rubber Lined - Metal Impeller - Gland Seal. Condition: Very Good.
- PU3602 **3/2 CAH Austral Slurry Pump:** Rubber Lined - Mounted on C-ZV1 Style Pump Base.
- PU3601 **3/2 CAH Austral Sand Pump:** Metal Lined - Gland Seal - Direct Coupled to 7.5 KW Hi Efficiency Motor & VVVF Drive.
- PU3599 **40 PV SP-1200 Austral Sump Pump:** Complete with 7.5 KW 4 Pole Hi Efficiency Motor.
- PU3598 **3/3 TC Warman Cyklo Pump:** Complete with Motor Base, Guard, 4KW Electric Motor. Condition: Unused.
- PU3595 **8/8 SV-TC Weir Minerals Sump Pump:** 2100 Leg - Complete with 18.5 KW Motor. Condition: Unused.
- PU3594 **40 VC SPR Warman Sump Pump:** 900 Leg - Rubber Lined - Complete with 7.5 KW Motor. Condition: Good.
- PU3593 **6/4 EAH Warman Slurry Pump:** Metal Lined - Metal Impeller - Centrifugal Seal. Condition: Refurbished.

Pumps Continued

- PU3592 **40 PV SP-1200 Austral Sump Pump:** Complete with 7.5 KW Motor - V-Belts, Pulleys & Guards. Condition: New.
- PU3591 **3/2 CAH Austral Slurry Pump:** Rubber Lined - Rubber Impeller - Rubber Expeller Ring - MQ C-CV Motor Base & Guard - VBelts & Pulleys.
- PU3590 **6/4 RV-TC Warman Sump Pump:** 2100 Leg - New Wet End - New Bearings - New Discharge Pipe Etc.
- PU3589 **4/3 CAH Austral Slurry Pump:** Rubber Lined - Rubber Impeller - Complete with MQ C-CV Motor Base & Guard - 22 KW Motor.
- PU3588 **8/6 EAH Warman Slurry Pump:** Metal Lined - Metal Impeller - Mechanical Seal. Condition: Overhauled.
- PU3587 **65 VDH GPS Weir Warman Sump Pump:** Metal Lined - 1200 Leg Length. Condition: Very Good.
- PU3586 **4/3 DAH Austral Slurry Pump:** Metal Lined - Metal Impeller - Metal Expeller Ring - Complete with MQ D-ZV1 Motor Base & Guard - 45 KW 4 Pole Hi Efficiency Motor. Condition: New.
- PU3585 **1/75 Austral Slurry Pump:** Rubber Lined - 3 Vane Rubber Impeller. Condition: New.
- PU3584 **4/3 DAH Austral Slurry Pump:** Rubber Lined - Rubber Impeller - Metal Expeller Ring - Complete with MQ D-CV Motor Base & Guard.
- PU3583 **12/10 FFAH Warman Slurry Pump:** Rubber Lined - Rubber Impeller - Centrifugal Seal. Condition: Overhauled.
- PU3582 **3/2 SC Warman Slurry Pump:** Rubber Lined - Metal Impeller - Rubber Centrifugal Seal.
- PU3581 **14/12 GAH Warman Slurry Pump:** Metal Lined - Metal Impeller. Condition: Fully Refurbished.
- PU3578 **150mm x 150mm Multiflo Weir Diesel Pump Set:** Model MFV290S - Complete with CAT 3304T Engine - Skid Mounted, Pontoon & Suction Boom. Condition: Very Good.
- PU3577 **8/6 FHX Multiflo Warman Diesel Pump Set:** Model MFV-W390B - Complete with CAT 340 GTA Engine - Skid Base, Pontoon & Boom - Suction Head. Condition: Very Good.
- PU3576 **6/4 DAH Austral Slurry Pump:** Urethane Lined - Urethane Impeller - Metal Expeller Ring - D-ZV1 Style Motor Base & Guard - 55 KW IP66 Motor.
- PU3575 **1.5/1 BAH Austral Slurry Pump:** Butyl Lined - Butyl Impeller - Complete with B-CV Style Motor Base & Guard - 5.5 KW Drive.
- PU3574 **8/6 EAH Austral Slurry Pump:** Metal Lined - Metal Impeller - Gland Seal.
- PU3573 **8/6 EAH Warman Slurry Pump:** Rubber Lined - Gland Seal. Condition: Fully Overhauled.

- PU3572 **3/2 CAH Austral Slurry Pump:** Rubber Lined
- Complete with CV Style Motor Base & Guard.
- PU3571 **1/1.75 ASC Austral Slurry Pump:** Rubber Lined
- PU3570 **4/3 CSC Warman Slurry Pump:** Metal Lined - Metal Impeller
- Gland Seal. Condition: Overhauled.
- PU3569 **4/3 CSC Warman Slurry Pump:** Rubber Lined - Rubber Impeller - Centrifugal Seal. Condition: Overhauled.
- PU3568 **8/6 EEAH Slurry Pump:** Metal Lined - 5 Vane Metal Impeller
- Centrifugal Seal. Condition: Unused.
- PU3567 **6/4 FHH Slurry Pump:** Metal Lined - Metal 6 Vane Impeller
- Centrifugal Seal. Condition: Unused.
- PU3566 **8/6 ESC Warman Slurry Pump:** Metal Lined - Metal 8 Vane Impeller - Rubber Centrifugal Seal. Condition: Very Good.
- PU3565 **1.5/1 BAH Warman Slurry Pump:** Rubber Lined - Rubber Impeller & Mechanical Seal - Mounted on B-CV Base & Guard - 5.5KW Motor. Condition: Good.
- PU3564 **6/4 DSC Warman Slurry Pump:** Rubber Lined - Metal Impeller - Metal Centrifugal Seal. Condition: Good.
- PU3563 **40 PV SPR-1200 Austral Sump Pump:** Rubber Lined
- Complete with 5.5 KW IP66 Motor, V-Belts & Pulleys.
- PU3562 **1.5 /1 BAHW Warman Slurry Pump:** Metal Lined - Metal Impeller - Wet Gland Seal - Complete with B-CV Base & Guard, 3KW Motor. Condition: Very Good.
- PU3561 **65 QV SP-1800 Austral Sump Pump:** Complete with Motor Base & Guard, 15 KW IP66 Motor.
- PU3560 **4/3 CSC Austral Sand Pump:** Rubber Lined - 8 Vane Metal Impeller - Complete with C-CV Style Motor Base & Guard.
- PU3559 **65 QV SPR-1200 Austral Sump Pump:** Complete with 7.5 KW IP66 Motor.
- PU3558 **3/2 CAH Austral Slurry Pump:** Rubber Lined - Complete with C-CV Style Motor Base & Guard, 15 KW IP66 Drive, V-Belts & Pulleys.
- PU3557 **2 /1.5 BAH Austral Slurry Pump:** Rubber Lined - Complete with B-CV Style Motor Base & Guard, IP66 Motor, V-Belts & Pulleys.
- PU3556 **4/3 CSC Austral Sand Pump:** Rubber Lined - Metal Expeller Ring.
- PU3555 **8/6 EAH Austral Slurry Pump:** Rubber Lined - Complete with E-CV Style Motor Base & Guard. Condition: New.
- PU3553 **6/4 DAH Austral Slurry Pump:** Metal Lined - Metal Expeller Ring. Condition: New.
- PU3552 **6/4 DAH Austral Slurry Pump:** Rubber Lined - Gland Seal - Complete with D-CV Style Motor Base & Guard, 22 KW Hi Efficiency Motor.

- PU3551 **3/2 CCAH Austral Slurry Pump:** Metal Lined - Gland Seal - Mounted on C-ZV2 Style Motor Base & Guard - 37 KW Drive.
- PU3550 **100 RV SP-1500 Austral Sump Pump:** Complete with Motor Base & Guard - 37 KW IP66 Motor.
- PU3549 **6/4 DSC Austral Slurry Pump:** Metal Lined - Metal Expeller Ring.
- PU3548 **6/4 DSC Austral Slurry Pump:** Metal Lined - Gland Seal - 8 Vane Metal Impeller.
- PU3547 **3/2 CAH Austral Slurry Pump:** Rubber Lined - On Skid Direct Coupled to 30 KW 2 Pole Motor.
- PU3546 **8/6 EG Austral Dredge Pump:** Fitted with Hi Lift Gland Seal.
- PU3545 **1.5/1 BAH Austral Slurry Pump:** Rubber Lined - Metal Impeller - On B-ZV1 Style Motor Base & Guard - 15 KW 2 Pole Motor.
- PU3544 **4/3 CSC Austral Sand Pump:** Rubber Lined - Complete with C-CV Style Motor Base & Guard, V-Belts & Pulleys.
- PU3543 **6/4 DSC Austral Slurry Pump:** Metal Lined - Metal Expeller Ring - Bareshaft.
- PU3542 **1/1.75 ASC Austral Slurry Pump:** Rubber Lined - 8 Vane Metal Impeller - Bareshaft.
- PU3541 **4/3 CAH Austral Slurry Pump:** Rubber Lined - Metal Impeller - Complete with C-ZV1 Style Motor Base & Guard - 22 KW Hi Efficiency Motor.
- PU3540 **3/2 CAH Warman Slurry Pump:** Bareshaft - Metal Lined - Metal 5 Vane Closed Impeller - Rubber Centrifugal Seal. Condition: Very Good.
- PU3539 **3/2 CAHW Warman Slurry Pump:** Metal Lined - Metal Impeller - Wet Gland Seal - Complete with CV Base & Guard. Condition: Good.
- PU3538 **6/4 DAH Warman Slurry Pump:** Metal Lined - Metal Impeller - Gland Seal - On ZV Base - Complete with 15 KW Motor. Condition: Unused.
- PU3537 **12 /10 FS Warman Solution Pump:** Metal 6 Vane Closed Impeller. Condition: Good.
- PU3536 **8/6 FFHX Warman Slurry Pump:** Metal Lined - Metal 4 Vane Impeller - Gland Seal. Condition: Fully Refurbished.
- PU3534 **12/10 FM Warman Slurry Pump:** Metal Lined - Metal Impeller. Condition: Good.
- PU3533 **2/1.5 BAH Weir Warman Slurry Pump:** Metal Lined - Metal Impeller - Complete with B-ZV Base & 5.5 KW Motor. Condition: Unused.
- PU3532 **2/1.5 BAH Warman Slurry Pump:** Bare Shaft - Metal Lined - Metal Impeller - Gland Seal. Condition: Excellent.
- PU3531 **12/10 FS Warman Solution Pump:** Metal Impeller. Condition: Good.



PU3610: 8/6 EAH Warman Slurry Pump: Metal Lined - Metal Impeller - Metal Centrifugal Seal. Condition: Excellent.



PU3606: 3 C-AHF Warman Froth Pump: Rubber Lined - Metal Impeller - Gland Seal. Condition: Very Good.



PU3598: 3/3 TC Warman Cyklo Pump: Complete with Motor Base, Guard, 4 KW Electric Motor. Condition: Unused.



PU3590: 6/4 RV-TC Warman Sump Pump: 2100 Leg - New Wet End - New Bearings - New Discharge Pipe etc.



PU3583: 12/10 FFAH Warman Slurry Pump: Rubber Lined - Rubber Impeller - Centrifugal Seal. Condition: Overhauled.



PU3577: 8/6 FHX Multiflo Warman Diesel Pump Set: Model MFV-W390B - Complete With CAT 340 GTA Engine - Skid Base, Pontoon & Boom - Suction Head. Condition: Very Good.



PU3538: 6/4 DAH Warman Slurry Pump: Metal Lined - Metal Impeller - Gland Seal - On ZV Base - Complete with 15 KW Motor. Condition: Unused.



PU3581: 14/12 GAH Warman Slurry Pump: Metal Lined - Metal Impeller. Condition: Fully Refurbished.

- PU3530 12/10 FS Warman Solution Pump:** Metal 6 Vane Closed Impeller. Condition: Appears Refurbished.
- PU3529 12/10 FM Warman Slurry Pump:** Metal Lined - Metal Impeller. Condition: Good.
- PU3528 1.5/1 BAH Warman Slurry Pump:** Metal Lined - Mechanical Seal Condition: Good.
- PU3527 10 x 8 EM Warman Slurry Pump:** Metal Lined - 5 Vane Closed - Metal Impeller - Gland Seal. Condition: Very Good.
- PU3520 200 x 250 x 630 Dowdens / Super Titan Pontoon Pump:** Complete with Pontoon, Pump, Motor & Switchboard. Condition: Excellent.
- PU3519 12 x 10 FS Warman Solution Pump:** Metal 6 Vane Closed Impeller. Condition: Refurbished.
- PU3517 150 x 125 x 400 BPE Unistream Water Pump:** Model 125/40 - Complete with 45 KW Electric Motor. Condition: Good.
- PU3516 8/6 EEAH Warman Slurry Pump:** Rubber Lined - Rubber Impeller - Centrifugal Seal. Condition: Overhauled.
- PU3515 12/10 K & L Worthington Pump:** Model 10LN 26B - Flow Rate 380 Litres/Second @ 100m Head - Complete with 560 KW Electric Motor. Condition: Very Good.
- PU3513 4/4 TC Warman Slurry Pump:** 8 Vane Open Impeller - Mechanical Seal. Condition: Excellent.
- PU3512 VF50 Verderflex Hose Pump:** Complete with 2.2 KW Drive Condition: Very Good.
- PU3511 SPX50 Bredel Hose Pump:** Complete with 5.5 KW Drive. Condition: Very Good.
- PU3510 SPX50 Bredel Hose Pump:** Complete with 7.5 KW Drive Condition: Very Good.
- PU3509 6/4 Warman Submersible Pump:** Metal Lined - Metal Impeller - 55 KW 4 Pole Motor. Condition: Very Good.
- PU3508 6/4 DAH Warman Slurry Pump:** Rubber Lined - Rubber Impeller - Gland Seal - Complete with 18.5 KW Motor. Condition: Very Good.
- PU3507 6/4 DAH Warman Slurry Pump:** Rubber Lined - Rubber Impeller - Gland Seal.
- PU3506 3/2 CAH Slurry Pump:** Metal Lined - Metal Impeller - Metal Centrifugal Seal. Condition: Unused.
- PU3505 6/4 EAH Slurry Pump:** Rubber Lined - Rubber Impeller - Metal Centrifugal Seal. Condition: Unused.
- PU3504 6/4 EAH Slurry Pump:** Rubber Lined - Rubber Impeller - Metal Centrifugal Seal. Condition: Unused.
- PU3503 6/4 EAH Slurry Pump:** Rubber Lined - Rubber Impeller - Metal Centrifugal Seal. Condition: Unused.
- PU3502 2 /1.5 BAH Slurry Pump:** Rubber Lined - Rubber Impeller - Mechanical Seal. Condition: Unused.

Pumps Continued

- PU3500 **2/2 QVTC Austral Sump Pump:** 1800 Leg - Complete with 5.5 KW Motor , Base & Guards. Condition: NEW.
- PU3499 **100 VEH GPS Warman Sump Pump:** 1500 Leg - Complete with Motor Base. Condition: Rebuilt.
- PU3498 **4/4 TC Warman Slurry Pump:** 8 Vane Open Impeller. Condition: Overhauled.
- PU3497 **350 x 300 Metso Slurry Pump:** Model EHC-D. Condition: Overhauled.
- PU3496 **300 x 250 Metso Slurry Pump:** Model EHC-D5. Condition: Overhauled.
- PU3495 **6 FF-HP Warman Slurry Pump:** Metal Lined - Gland Seal.
- PU3494 **6/4 DDAH Weir Warman Slurry Pump:** Poly Lined - Metal Impeller - Mechanical Seal. Condition: Appears Unused.
- PU3493 **8/6 EEAH Weir Warman Slurry Pump:** Metal Lined - Metal Impeller - Gland Seal - Bareshaft. Condition: Appears Unused.
- PU3492 **400 L/S @50M HD Weir Multiflow Dewatering Station:** Twin 8/6 EEAH Warman Pumps - Pontoon Mounted - Electric Drive. Condition: Very Good.
- PU3491 **8/6 EAH Warman Slurry Pump:** Rubber Lined - Rubber Impeller - Complete with CV Motor Base & 55 KW Electric Motor. Condition: Overhauled.
- PU3489 **8/6 Berkley Diesel Water Pump:** 13.5" Impeller - 6 Cylinder Deutz Engine. Condition: As New.
- PU3487 **38 CC HRM Warman Slurry Pump:** Metal Lined - Metal Impeller - Mechanical Seal - Bareshaft. Condition: Overhauled.
- PU3485 **12/10 FFAH Austral Slurry Pump:**
- PU3484 **6/4 DAH Warman Slurry Pump:** Rubber Lined - Rubber Impeller. Condition: Good.
- PU3482 **10/8 FFGH Warman Dredge Pump:** Metal Lined - Metal Impeller - Gland Seal. Condition: Very Good.
- PU3481 **12/10 GGH Austral Dredge Pump:** Metal Lined - Metal Impeller - Gland Seal. Condition: New.
- PU3480 **250-200 Southern Cross Water Pump:** Bronze Impeller. Condition: Good.
- PU3477 **8/6 EG Warman Dredge Pump:** Metal Lined - Metal Impeller - Gland Seal. Condition: Good.
- PU3475 **2/2 TC Austral Cyklo Pump:** Complete with Motor Base - Guard - 3 KW Motor. Condition: New.
- PU3473 **8/6 FAH Warman Slurry Pump:** Metal Lined - Poly Impeller - Gland Seal - On ZV Base with a 150 KW Electric Motor. Condition: Very Good.
- PU3471 **6/4 DAH Warman Slurry Pump:** Metal Lined - Metal Impeller - On CV-L Base & Guard. Condition: Very Good.

FOR FULL STOCK LIST & PHOTOGRAPHS SEE WEBSITE



AUSTRAL PUMPSTM



**FULL RANGE OF
SLURRY AND
DREDGE PUMPS
AVAILABLE**



- PU3468 **10/8 FFAH Warman Slurry Pump:** Metal Lined - Metal Impeller - on ZV Base - Complete with 75KW Motor. Condition: Good.
- PU3467 **8/6 EAH Warman Slurry Pump:** Metal Lined - Metal Impeller - on ZV Base - Complete with 110KW Motor. Condition: Very Good.
- PU3466 **6/4 DAH Warman Slurry Pump:** Rubber Lined - Rubber Impeller - on ZV Base Complete with 22 KW Motor. Condition: Very Good.
- PU3462 **4/3 DAH Warman Slurry Pump:** Metal Lined - Metal Impeller - Metal Centrifugal Seal - Complete with 15KW Motor. Condition: Good.
- PU3461 **4/3 DAH Warman Slurry Pump:** Metal Lined
- PU3460 **10/8 FAH Warman / Cat Pump Set:** Warman 10 x 8 FAH / Caterpillar.
- PU3459 **6 FH Warman Slurry Pump:** Metal Lined - Gland Seal.
- PU3457 **10/8 ESC Austral Slurry Pump:** Metal Lined. Condition: New.
- PU3456 **10/8 FAH Warman Slurry Pump:** Liners & Impeller to be fitted as requested. Condition: As New.
- PU3455 **2/2 TC Warman Cyklo Pump:** Complete with 3KW Motor & Motor Base. Condition: Very Good.
- PU3454 **10/8 ESC Warman Slurry Pump:** Liners & Impeller to be fitted as required. Condition: As New.
- PU3451 **2/1.5 BAH Austral Slurry Pump:** Bareshaft - Rubber Lined - Rubber Impeller - Gland Seal. Condition: New.
- PU3447 **100 CGP Warman Slurry Pump:** Metal Lined - 5 Vane Closed Impeller - Gland Seal. Condition: Very Good.
- PU3446 **8/6 FAH Austral Slurry Pump:** Metal Lined - Metal Impeller - Metal Centrifugal Seal. Condition: New.
- PU3445 **8/6 EAH Austral Slurry Pump:** Metal Lined - Metal Impeller - Metal Centrifugal Seal - Complete with E-CV Style Base & Guard. Condition: New.
- PU3444 **6/4 EAH Austral Slurry Pump:** Metal Lined - Metal Impeller - Metal Centrifugal Seal. Condition: New.
- PU3443 **6/4 DAH Austral Slurry Pump:** Rubber Lined - Rubber Impeller - Metal Centrifugal Seal - Complete with 30KW Motor - D-CV Style Base. Condition: New.
- PU3442 **4/3 DAH Austral Slurry Pump:** Metal Lined - Metal Impeller - Metal Centrifugal Seal - Complete with 55KW Motor on D-ZV1 Style Base. Condition: New.
- PU3441 **4/3 CAH Austral Slurry Pump:** Rubber Lined - Rubber Impeller - Rubber Centrifugal Seal - Complete with 30KW Motor on CZV2 Style Base. Condition: New.

- PU3440 **3/2 CAH Austral Slurry Pump:** Metal Lined - Metal Impeller - Gland Seal - Complete with 4KW Motor on C-CV Style Base. Condition: New.
- PU3439 **2/1.5 BAH Austral Slurry Pump:** Rubber Lined - Rubber Impeller - Rubber Centrifugal Seal - Complete with 4KW Motor on BCV Style Base. Condition: New.
- PU3438 **1.5/1 BAH Austral Slurry Pump:** Metal Lined - Metal Impeller - Metal Centrifugal Seal. Condition: New.
- PU3437 **10/8 SGH Austral Dredge Pump:** Metal Lined - Metal Impeller - Gland Seal - Hi Lift. Condition: New.
- PU3436 **10/8 FGH Austral Dredge Pump:** Metal Lined - Metal Impeller - Gland Seal - Hi Lift. Condition: New.
- PU3435 **8/6 FGH Austral Dredge Pump:** Metal Lined - Metal Impeller - Gland Seal - Hi Lift. Condition: New.
- PU3434 **8/6 EG Austral Dredge Pump:** Metal Lined - Metal Impeller - Gland Seal - Hi Lift. Condition: New.
- PU3433 **6/4 DG Austral Dredge Pump:** Metal Lined - Metal Impeller - Gland Seal - Hi Lift. Condition: New.
- PU3432 **10/8 ESC Austral Slurry Pump:** Metal Lined - Metal Impeller - Metal Centrifugal Seal. Condition: New.
- PU3431 **8/6 ESC Austral Slurry Pump:** Rubber Lined - Rubber Impeller - Rubber Centrifugal Seal. Condition: New.
- PU3430 **6/4 DSC Austral Slurry Pump:** Metal Lined - Metal Impeller - Metal Centrifugal Seal - Complete with D-CV Style Base. Condition: New.
- PU3429 **4/3 CSC Austral Slurry Pump:** Metal Lined - Metal Impeller - Metal Centrifugal Seal. Condition: New.
- PU3428 **1/1.75 ASC Austral Slurry Pump:** Condition: New.
- PU3422 **4/3 CCAH Austral Slurry Pump Set:** Rubber Lined - Metal Impeller - Gland Seal - Mounted on C-ZV2 Base Complete with Guard. Fitted with 37 KW Drive. Condition: New.
- PU3418 **8/6 FAH Warman Slurry Pump:** Metal Lined - Metal Expeller Ring.
- PU3417 **SPX80 Bredel Hose Pump:** Complete with 11 KW Drive. Condition: Very Good.
- PU3416 **65 VDH GPS Warman Sump Pump:** 1200 Leg - Complete with 30 KW 4 Pole Teco Electric Motor. Condition: As New.
- PU3414 **2/2 QV TC Austral Sump Pump:** 1800 Leg - Complete with Motor Mount & Guards. Condition: New.
- PU3413 **50 Verder Flex Hose Pump:** Complete with 2.2 KW Drive.
- PU3410 **2/2 Weir Roto-Jet Pump:** Model RG - Max 400 G/PM @ 792m Head. Condition: Overhauled.
- PU3409 **10/8 ESC Warman Slurry Pump:** Rubber Lined - Metal Impeller - Gland Seal - Bareshaft. Condition: Overhauled.

- PU3407 **12/10 GGH Warman Dredge Pump:** Metal Lined
- Metal Impeller - GZV1 Base & Leverlink Motor Mount.
- PU3405 **300 FL Warman Slurry Pump:** Metal Lined - Metal Impeller
- FZV2 Base & Leverlink Motor Mount.
- PU3404 **125 x 100-200 Southern Cross Water Pump:**
Bronze Impeller. Condition: Unused.
- PU3399 **4/3 EHH Warman Slurry Pump:** Metal Lined - Metal Impeller
- Metal Centrifugal Seal - Bareshaft. Condition: As New.
- PU3397 **10/8 FAH Warman Slurry Pump:** Rubber Lined
- Rubber Impeller - Rubber Centrifugal Seal - Bareshaft.
Condition: Overhauled.
- PU3395 **CL-1002 Nash Vacuum Pump:** Unused.
- PU3394 **All Warman / Austral Slurry Pump Parts:** Full Range
available. Condition: New.
- PU3393 **4/3 HH Warman Dewatering Pump Station:** Twin Pump
- 1000 Volts - Complete with Header Tank, Motors,
Starters - Capacity 65 Litres/Second @ 70m Head per Pump.
Condition: Very Good.
- PU3392 **100mm Flygt Submersible Pump:** Model BS2201.011
- 37 KW - 2935 RPM - 415 Volts - 40 Litres/Second @ 60M
Head - Imp Dia 243MM. Condition: Appears Unused.
- PU3389 **60mm Brain Mud Skipper Pump:** 24,000 Litres/Hour @ 50m
Head - Air Operated. Condition: Good.
- PU3384 **3/2 DHH Warman Slurry Pump:** Metal Lined - Metal Impeller.
Condition: Unused.
- PU3382 **1/75 ASC Warman Slurry Pump:** Rubber Lined
- Rubber Expeller Ring - 4 Vane Metal Impeller.
Condition: Fully Overhauled.
- PU3373 **SPX15 Bredel Hose Pump:** Complete with .75 KW Motor &
Spare Hose.
- PU3367 **5" Detroit/Kelly & Lewis Fire Pump:** Model 70 - 5" - 9"
- Capacity 3750 Litres/Minute - Diesel Engine Powered.
Condition: As New.
- PU3363 **65 VDH GPS Warman Sump Pump:** 1800 Leg
- PU3362 **10/8 SC Warman Slurry Pump:** Rubber Lined
- Metal Impeller. Condition: Good.
- PU3360 **8/6 SC Austral Slurry Pump:** Rubber Lined - Metal Impeller
- Expeller Seal. Condition: Good.
- PU3359 **4/3 HH Warman Slurry Pump:** Metal Lined - Gland Seal.
Condition: Good.
- PU3357 **6/4 DAH Warman Slurry Pump:** Metal Lined - Metal Impeller
- On ZV Base - Complete with 55 KW Motor.
Condition: Good.
- PU3355 **6/4 DDAH Warman Slurry Pump:** Metal Lined - Metal
Impeller - On ZV Base - Complete with 75 KW Motor.
Condition: Good.

[FOR FULL STOCK LIST & PHOTOGRAPHS SEE WEBSITE](#)

- PU3348 **4/3 CAH Warman Slurry Pump:** Metal Lined - Metal Impeller
- Gland Seal - Complete with 7.5 KW 4 Pole Motor.
Condition: Good.
- PU3346 **100 RV-SP Warman Sump Pump:** 1800 Leg.
Condition: Excellent.
- PU3345 **12/10 GG Warman Dredge Pump:** Condition: Very Good.
- PU3340 **10/8 FG Warman Dredge Pump:** Condition: Rebuilt.
- PU3332 **6/4 DAH Warman Slurry Pump:** Rubber Lined - Gland Seal
- CV Motor Base - 30 KW Toshiba 4 Pole Motor.
- PU3331 **12/10 FM Warman Slurry Pump:** Rubber Lined
- F-ZV2 Pump Base - 250 KW Toshiba Motor.
- PU3328 **1.5/1 BAH Warman Slurry Pump:** Rubber Lined
- Metal Expeller Ring - Rubber Impeller - On ZV Base
- 7.5 KW Motor.
- PU3326 **12/10 FS Warman Solution Pump:**
- PU3321 **1.5/1 BAH Warman Slurry Pump:** Rubber Lined
- Expeller Seal.
- PU3313 **450L Warman Slurry Pump:** Rubber Lined - 5 Vane Rubber
Impeller - Gland Seal.
- PU3310 **65 QV SPR Warman Sump Pump:**
- PU3307 **CL3001 Nash Vacuum Pump:**
- PU3304 **CL2001 Nash Vacuum Pump:**
- PU3303 **CL2002 Nash Vacuum Pump:**
- PU3302 **CL3002 Nash Vacuum Pump:**
- PU3282 **4/4 TC Warman Pump:**
- PU3281 **4/3 DDAH Warman Slurry Pump:** Metal Lined - 5 Vane
Closed Impeller - On ZV Base. Condition: Overhauled.
- PU3278 **4/3 DDAH Warman Slurry Pump:** Metal Lined - 5 Vane
Closed Impeller - On ZV Base. Condition: Overhauled.
- PU3276 **65 QV SP Austral Sump Pump:** Metal Lined - 1500 Leg.
Condition: Overhauled.
- PU3272 **20/20 GD Warman Dredge Pump:** Bareshaft
- PU3271 **300L Warman Slurry Pump:** Metal Lined / Metal Impeller
- PU3268 **150 SV SP Warman Sump Pump:**
- PU3265 **6/4 DDAH Warman Slurry Pump:** Metal Lined / Metal
Impeller.
- PU3262 **12/10 FFM Warman Slurry Pump:** Metal Lined.
- PU3244 **50 GP Warman Slurry Pump:** Rubber Lined - Metal Impeller.
Condition: Good.
- PU3238 **100 RV SP Warman Sump Pump:** Metal Lined.
- PU3223 **6/4 DAH Warman Slurry Pump:** Rubber Lined - Expeller
Seal. Condition: Overhauled.
- PU3218 **6/4 EESH Warman Solution Pump:** Complete with 185 KW
Pope Motor.

[FOR FULL STOCK LIST & PHOTOGRAPHS SEE WEBSITE](#)



PU3536: 8/6 FFHX Warman Slurry Pump: Metal Lined - Metal 4 Vane Impeller - Gland Seal. Condition: Fully Refurbished.



PU3520: 200 x 250 x 630 Dowdens/Super Titan Pontoon Pump: Complete with Pontoon, Pump, Motor & Switchboard. Condition: Excellent.



SC3220: 2400 x 6100 x 1D Allis Chalmers/Svedala Screen: Low Head - Twin 4-3 Exciter. Condition: Excellent.



SC3217: 1800 x 3700 x 1D Honert Screen: Complete with Stand, Sump, Drive & Discharge Tray. Condition: Excellent.



SC3204: 12 x 5 x 2D Jaques Terex Screen: Complete with Springs & Mounts. Condition: Very Good.



SC3206: 20 x 8 x 3D Terex Jaques Screen: Torrent - Complete with Springs & Electric Drive. Condition: Excellent.

- PU3165 **100mm KSB Ajax Submersible Pump:** Model KRTK 100-400 - Capacity 20 Litres/second @ 50m Head.
- PU3160 **125 x 80 x 250 KSB Ajax Water Pump:** Model 80-250 - Capacity 25 Litres/second @ 12m Head @ 1450 RPM.
- PU3154 **200 x 150 x 250 KSB Ajax Water Pump:** Model WKF 150/2 - 2 Stage - Capacity 86 litres/second @ 155m Head.
- PU3144 **250 x 250 x 500 KSB Ajax Water Pump:** Model 250/500-NA - Capacity 210 Litres/second @ 65m Head @ 1450 RPM.
- PU3127 **50 KSB Multi Stage Pump:** Model MOU150 - Coupled to 37 KW 2 Pole Motor. Capacity 10.5 litres per second @ 200m head.
- PU3108 **250 x 200 Worthington Pump:** Model 8LR-13A - Capacity 196 Litres/second @ 20M head.
- PU3088 **10/8 EEM Warman Slurry Pump:** Rubber lined - 5 Vane Rubber Impeller.
- PU3087 **10/8 EEM Warman Slurry Pump:** Rubber lined - 5 Vane Rubber Impeller.
- PU3086 **6" Worthington Pump:** Model 4HN-143 - Capacity 55 L/S @ 180M Head @ 2900 RPM.
- PU3073 **12/10 Worthington Pump:** Model 10LR15-A - Flow Rate 300 Litres per Second @ 30m Head.

SCREENS

- SC3217 **1800 x 3700x1D Honert Screen:** Complete with Stand, Sump, Drive & Discharge Tray. Condition: Excellent.
- SC3216 **DF601S Schenck Screen Exciter:** Complete with Counterweights & Transport Frame. Condition: Very Good.
- SC3214 **DU4 Thyssen Krupp Screen Exciter:** Complete with Counterweights. Condition: Very Good.
- SC3209 **4-3 Allis Chalmers Screen Exciter:** Model F. Condition: Good.
- SC3206 **20 x 8 x 3D Terex Jaques Screen:** Torrent - Complete with Springs & Electric Drive. Condition: Excellent.
- SC3205 **16 x 6 x 2D Terex Jaques Screen:** Torrent - Complete with Springs & Mounts. Condition: Very Good.
- SC3204 **12 x 5 x 2D Jaques Terex Screen:** Complete with Springs & Mounts. Condition: Very Good.
- SC3203 **UE65 Honert Screen Exciter:** Ex BHP Store. Condition: Overhauled.
- SC3201 **12 x 5 x 2D Jaques Screen:** Complete with Skid Mounted Stand & 900 Wide Discharge Conveyor. Condition: Good.
- SC3199 **2400 x 6100x 2D Metso Nordberg Screen:** Multi slope Banana Screen - Model TS402. Condition: Unused.

- SC3198 **DF 601V Schenck Screen Exciter:** Complete with Counterweights & Transport Frame. Condition: Appears Unused.
- SC3196 **DF401V Schenck Process Screen Exciter:** Complete with Counterweights & Transport Frame. Condition: Good.
- SC3195 **DF601V Schenck Process Screen Exciter:** Complete with Counterweights & Transport Frame. Condition: Very Good.
- SC3193 **DF404V Schenck Screen Exciter:** Complete with Counterweights. Condition: Very Good.
- SC3191 **DF604S Schenck Screen Exciter:** Complete with Counterweights & Transport Frame. Condition: Very Good.
- SC3188 **JR800 Jost Screen Exciter:** Complete with Weights & Transport Frame. Condition: Good.
- SC3187 **JR808 Jost Screen Exciter:** Complete with Weights & Transport Frame. Condition: Good.
- SC3184 **DF504V Schenck Process Screen Exciter:** Complete with Weights & Transport Frame. Condition: Good.
- SC3183 **LM Metso Screen Exciter:** Condition: Good.
- SC3179 **HE30 Honert Screen Exciter:** Condition: Reconditioned.
- SC3178 **LSK65 Ludowici Screen Exciter:** LMPE - Complete with Counterweights. Condition: Overhauled.
- SC3176 **3000 x 7300x2D Schenck Screen:** Double Deck Banana - Complete with Stand, Wet Sump, Drive, Springs, Twin DF601S Exciters. Condition: Excellent.
- SC3175 **14 x 4 x 3D Screen:** Complete with Pulley. Condition: Very Good.
- SC3174 **JR408 Jost Screen Exciter:** Complete with Counterweights. Condition: Good.
- SC3173 **JR608 Jost Screen Exciter:** Complete with Counterweights. Condition: Very Good.
- SC3170 **1830 x 4900x2D Bond Equipment Screen:** Horizontal Dewatering Style - Complete with Twin Exciters & Springs.
- SC3167 **3000 x 4800 X1D Metso/Screenix Screen:** Low Head - Dewatering Style - Twin 4-3 Exciters. Condition: As New.
- SC3165 **2400 x 4800x2D Ludowici MPE Screen:** Horizontal Style - Complete with Twin 11 KW Motor, Springs & Mounts. Condition: Excellent.
- SC3163 **LSK65 Ludowici Screen Exciter:** LMPE - Complete with Counterweights. Condition: Appears Unused.
- SC3161 **DF504S Schenck Process Screen Exciter:** Complete with Weights. Condition: Very Good.
- SC3160 **LSK65 Ludowici Screen Exciter:** LMPE - Ex Mining Store - Complete with Transport Frame. Condition: Overhauled.
- SC3153 **3192 x 8132 RCR Tomlinson Scrubber/Trommel:** Complete with Twin 185 KW Drives, Base Frame & Discharge Trommel. Condition: Very Good.

- SC3151 **3000 x 7300 x2D Schenck Screen:** Double Deck Banana - Complete with Stand, Wet Sump, Drive, Springs, Twin DF601S Exciters.
- SC3150 **DF3 Schenck Process Screen Exciter:** Type DF300-S. Condition: Unused.
- SC3146 **16 x 6 x 3D Hawk Screen:** Complete with Spings & Electric Motor. Condition: Good.
- SC3144 **2400 x7300 x 2D Schenck Screen:** Horizontal Dewatering Screen - Twin DF601 Exciters. Condition: Good.
- SC3143 **2400 x 6100x1D Allis Chalmers / Svedala Screen:** Low Head - Twin 4-3 Exciters - 1 Units Available. Condition: Very Good.
- SC3142 **3600 x 8000 x 2D Schenck Screen:** Banana Screen - Complete with triple DF601V Exciters. Condition: Excellent.
- SC3141 **3600 x8000 x 2D Schenck Screening Plant:** Banana Screen - Complete with Stand, Chutes, Walkways & Drive Motor. Condition: As New.
- SC3139 **3000 x 7600 RCR Tomlinson Scrubber:** Complete with Twin 220 KW Drives, Base Frame & Underpan. Condition: As New.
- SC3136 **1200 x 4800 x1D Svedala Boliden Allis Screen:** Low Head Dewatering Screen - Single 3-3 Exciter. Condition: Very Good.
- SC3135 **48" Kason Screen:** Single Deck - Complete with Spacer for Ball Deck & Lid. Condition: Overhauled.
- SC3134 **16 x 6 x 3D Metro Machinery Screen:** Unit is Galvanised. Condition: As New.
- SC3132 **8 x 4 x 2D Finlay Screening Plant:** Model Highway/ Telescopic - Complete with 6m Feed Hopper - ST3 Lister Engine (2000 Hours) - Capacity 100-400 TPH. Condition: Very Good.
- SC3131 **14 x 5 x 3D Jaques Screen:** Complete with Skid Mounted Stand, Chutes, Motor & Springs. Condition: Very Good.
- SC3130 **HE 30 Honert Screen Exciter:** Complete with Counter Weights. Condition: Appears Unused.
- SC3129 **16 x 6 x 2D Jaques Screen:** Torrent
- SC3127 **2635 x 4175 RCR Tomlinson Scrubber Trommell:** Complete with 150 KW Drive Motor & Spares. Condition: Excellent.
- SC3121 **UE80 Honert Screen Exciter:** Ex Mining Store. Condition: Appears Unused.
- SC3118 **UE80 Honert Screen Exciter:** Ex Mining Store. Condition: Appears Unused.
- SC3111 **HE100 Honert Screen Exciter:** Type HE100L S001
- SC3109 **Siebtechnik Screen Exciter:** Type 31. Condition: Overhauled.

- SC3104 **12 x 6 x 3D QFE Screen:** Complete with Top Screen Spray Bars. Condition: Very Good.
- SC3103 **72" Kason Screen:** Single Deck - Model K72 2CS. Condition: Good.
- SC3100 **72" Kason Screen:** Model K72-21K-SS - Twin Deck. Condition: Very Good.
- SC3096 **1000 x 2000 Scrubber:** Mounted on Frame with Electric Drive Unit. Condition: Good.
- SC3091 **10 x 5 x 1D Allis Chalmers Screen:** Heavy Duty.
- SC3086 **1800 x 4800 x1D Boliden Allis Screen:** Low Head - Single 4-3F Mechanism. Condition: Good.
- SC3083 **500 x 1200 Rotex Screen:** Single Deck - Fitted with Ball Tray and Spray Bars.
- SC3080 **1500 x 3600 Scrubber Trommel:** Trailer Mounted
- SC3078 **6 x 3 x 2D Jaques Screen:** Complete with Springs & Mounts. Condition: Very Good.
- SC3072 **20 x 8 x 3D Allis Chalmers Side Plates:** Left & Right Side Plates - Double Mechanism. Condition: Excellent.
- SC3070 **20 x 8 x 2D Allis Chalmers Screen:** Single Mechanism. Condition: Good.
- SC3068 **3000 x 8000 Sala Trommel:** Heavy Duty - Fitted with Poly Screens - Mounted on Hard Rubber Tyres - Rexroth direct Hydraulic Drive - Complete with 30 KW Hydraulic Power Pack. Condition: Good.
- SC3045 **2000 x 8000 M & Q Trommel:** Heavy Duty - Mounted on Six Rubber Tyres. Complete with 11 KW Drive and Reduction Box.

SILOS, TANKS & HOPPERS

- SL3064 **12 Metre Feed Bin:** Complete with 900mm Wide Belt Feeder & 11 KW Electric Drive. Condition: Very Good.
- SL3063 **15 Metre Feed Bin:** Complete with 1200 Wide Belt Feeder & Electric Drive. Condition: Good.
- SL3062 **55 Metre M & Q Silo:** Complete with Baghouse & Bottom Fill Pipe. Condition: Very Good.
- SL3061 **4000 Litre M & Q Pump Sump:** 2.4 x 2.4 x 1.6 - Rubber Lined. Condition: Very Good.
- SL3060 **2500 Litre M & Q Pump Sump:** 1950 x 1650 x 1350 - Linatex Lined. Condition: As New.
- SL3055 **4 Metre M & Q Hopper:** 3.2M Long x 2.1M Wide x 2.8M Tall. Condition: As New.
- SL3052 **20 Metre M & Q Primary Feed Bin:** Complete with Grizzly, 800mm Belt Feeder & Bin Vibrators. Condition: As New.

- SL3051 **30 Metre M & Q Silo:** Complete with Access Ladder & Bottom Fill Pipe. Condition: Good.
- SL3048 **320,000 Litre Prince Engineering Silo:** 2 Units Available - Aluminium Construction - 4.3 Diameter - 25M High. Condition: Excellent.
- SL3045 **10 Metre Silo:** Overall Height 4.8M - Complete with Active Bottom. Condition: Very Good.
- SL3043 **12 Metre Silo:** Overall Height 5.6M - Complete with Active Bottom. Condition: Very Good.
- SL3038 **5,000 Litre Tank:** Stainless Steel on Stand - Tank 1900 Diameter x 1800 High Plus Stand.
- SL3033 **1,000 Litre Mixing Tank:** Rubber Lined - Fitted with .75 KW Mixer.
- SL3031 **1,350 Litre Tank:** Mild Steel - 1200 x 1200.
- SL3023 **2300 Litre Tank:** 1400 Diameter x 1500 High - On Legs - Fitted with 1 HP Twin Impeller Mixer.
- SL3022 **1700 Litre Tank:** 1600 Diameter x 1250 high - On Legs.
- SL3016 **23,000 Litre Horizontal Tank:** 6.2m Long x 2.2m Diameter - On Legs. Condition: Very Good.
- SL3008 **1200 Litre Tank:** Stainless Steel - On Stand.
- SL3007 **4000 Litre Tank:** Stainless Steel - Mounted on 900 High Stand.

SUNDRIES

- SU3094 **Rexroth Hydraulic Power Pack:** Complete with Stainless Steel Enclosures - Used to run 5.5' Symons - Lock, Adjust & Cleaning Setup. Condition: Good.
- SU3092 **52 HP Oil Lift / Isuzu Diesel Hyd Power Pack:** Isuzu 2.2 Litre Engine - 80cc Kawasaki Pump. Condition: Excellent.
- SU3089 **3.7 KW Uras Vibrating Motor:** 1440 RPM. Condition: Unused.
- SU3087 **175 CFM Airman Air Compressor:** Model DDS175S - Diesel Power. Condition: Very Good.
- SU3086 **1.5 KW Asea Hydraulic Power Pack:** Complete with Tank, Electric Motor & Pump. Condition: Good.
- SU3085 **2 HP Hydraulic Power Pack:** 3 Units Available - Complete with Tank, Motor & Pump. Condition: Good.
- SU3084 **.55 KW Weg Hydraulic Power Pack:** Complete with Tank, Motor & Pump. Condition: Very Good.
- SU3081 **.9 KW Invicta Vibrating Motor:** 960 RPM - Model BLZ / 30-18/6. Condition: Very Good.

- SU3080 **200 HP Caterpillar Diesel Hyd Power Pack:** CAT 3306 Engine - 2 Large & 1 Small Hydraulic Pumps. Condition: Very Good.
- SU3079 **5.5 Metre Agitator:** Complete with Hydraulic Drive Motor & Hydraulic Pump. Condition: Good.
- SU3074 **30 Metre DCE Vokes Dust Collector:** Dalamatric.
- SU3063 **3.7 KW Uras Vibrating Motor:** 980 RPM - 6000 Kg Force.
- SU3043 **4800 Watts Invicta (TECO) Vibrating Motor:** 1440 RPM - BK-50-75 / 4.
- SU3042 **4000 Watts Invicta (TECO) Vibrating Motor:** 960 RPM - BK-50-75/6.

VALVES

- VA3119 **250 DVI Valve:** Table E Flanges.
- VA3118 **300 DVI Valve:** Table E Flanges. Condition: New.
- VA3117 **200 WCB Gate Valve:** Rating 150 - Year 2005. Condition: Unused.
- VA3116 **250 Knife Gate Valve:** Stainless Steel Condition: Good.
- VA3114 **200 DVI Valve:** Table E Flanges. Condition: New.
- VA3113 **100 DVI Valve:** Table E Flanges. Condition: New.
- VA3110 **150 DVI Valve:** Table E Flanges. Condition: New.
- VA3109 **400 DVI Valve:** Table E Flange. Condition: New.
- VA3108 **350 DVI Valve:** Table E Flange. Condition: New.
- VA3106 **450 AVK Gate Valve:** Model RSGV with ANSI150 Flanges. Condition: Unused.
- VA3105 **300 AVK Gate Valve:** Model RSGV with ANSI150 Flange. Condition: Unused.
- VA3102 **150 DVI Valve:** Table E Flange. Condition: NEW.
- VA3101 **250 x 250 Ducon Rotary Valve:** Complete with Base & Drive Cog. Condition: Unused.
- VA3098 **100mm Tech Taylor Valve:** Condition: Unused.
- VA3097 **200mm Larox Pinch Valve:**
- VA3096 **80mm Larox Pinch Valve:** Type PVE 80 H10 923 LRX
- VA3095 **300 Tech Taylor Valve:** Model AB300-AR00. Condition: Very Good.
- VA3094 **150mm Nu-Con Rotary Valve:** Model CV375 DEMU - Stainless Steel. Condition: As New.
- VA3084 **14" DeZurik Valve:** One way Slurry shut off Valve - Rubber Liners. Condition: Unused.
- VA3083 **4" Turnflo Valve:** 316 Stainless Steel.

- VA3079 **200mm Tech Taylor Valve:** Model T2F8-AR00.
- VA3077 **2" Tuflin 3 Way Valve:** Stainless Steel - Electric Drive.
- VA3022 **18" Warman Tech Taylor Valve:** Model T2F18-AR00.

WASHING EQUIPMENT

- WE3020 **4500 x 4500 Linatex Density Bin:** 100 TPH Sand Washing Bin. Condition: Good.
- WE3019 **4500 x 4500 Linatex Density Bin:** 100 TPH Sand Washing Bin. Condition: Good.
- WE3017 **175 TPH M & Q Equipment Fine Material Washer:** Model MQ XL175 - Fixed Unit - Complete with 18.5 KW Electric Drive Motor. Condition: New.
- WE3015 **175 TPH M & Q Equipment Coarse Material Washer:** Model MQXC175 - Complete with 22 KW Electric Motor. Condition: New.
- WE3011 **125 TPH M & Q Log Washer:** Model MQLW125 - Complete with 110 KW Electric Motor. Condition: New.
- WE3008 **100 TPH M & Q Equipment Sand Screw:** Model MQ XL-100 - Fixed Unit - Complete with 11 KW Electric Drive Motor. Condition: New.
- WE3007 **100 TPH M & Q Equipment Sand Screw:** Model MQ XL100 - Mobile Unit complete with Hydraulic Drive. Condition: New.
- WE3003 **6000 x 6000 M & Q Equipment Density Bin:** 150 TPH - Sand Washing Bin. Condition: New.

WINCHES

- WH3003 **15 HP Joy Scraper Winch:** Double Drum - Electric - Overhauled.



WE3007: 100 TPH M & Q Equipment Sand Screw: Model MQ XL100 - Mobile Unit complete with Hydraulic Drive. Condition: New.



WE3020: 4500 x 4500 Linatex Density Bin: 100 TPH Sand Washing Bin.

NEW MAGNETS

A FULL RANGE OF
NEW PERMANENT
AND ELECTRO
MAGNETS FROM
600MM TO
1400MM ARE IN
STOCK IN BOTH
MANUAL AND
SELF-CLEANING.



WE ALSO OFFER DVI VALVES

100 DVI

150 DVI

200 DVI

250 DVI

300 DVI

350 DVI

400 DVI



**ALL AVAILABLE
EX STOCK
BRISBANE**

SAND AND GRAVEL WASHING EQUIPMENT



**WE3008: 100 TPH
M & Q Equipment
Sand Screw: Model
MQ XL-100 - Fixed
Unit - Complete with
11 KW Electric Drive
Motor. Condition: New**



**LARGE RANGE OF
SLURRY PUMPS &
CYCLONES**



**WE3015: 175 TPH
M & Q Equipment
Coarse Material
Washer: Model
MQXC175 - Complete
with 22 KW Electric
Motor. Condition: New**



M & Q EQUIPMENT

Phone: 07 3879 3335 | www.mqe.com.au