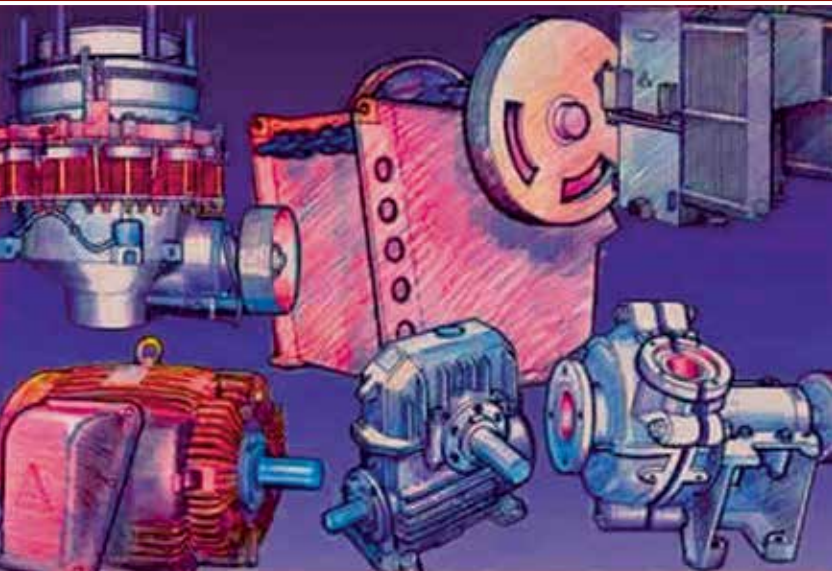


M & Q EQUIPMENT

ISSUE 7 | 2017 | BRISBANE



THE SOURCE OF NEW AND USED MINING
AND QUARRYING EQUIPMENT WORLDWIDE

CRUSHERS • FEEDERS • SCREENS • CONVEYORS
TRANSFORMERS • ALTERNATORS • ELECTRIC MOTORS
GEAR BOXES • COMPRESSORS • PUMPS
BALL MILLS • DRYERS

103 Bandara Street
Richlands Queensland 4077
Australia

Email: robo@mqe.com.au

PHONE: 07 3879 3335

Fax: 07 3879 3336

www.mqe.com.au

SLURRY PUMP PARTS

**OTHER SIZES
AND TYPES
AVAILABLE
ON
REQUEST**

M & Q Equipment stock and sell an extensive range of replacement parts to suit Warman and Austral Pumps. We also supply complete New Austral Pumps and Rebuilt Warman Pumps. We offer quality products that come in a variety of materials at a lower cost. We strive to minimize customer downtime and maximize customer savings. We hold all parts ex stock ready for immediate delivery and are committed to providing our customers great service. We have a specialized team with over 50 years experience in the Slurry Pump Industry. Our range of parts is continuously increasing and developing as our presence in the industry increases.

M & Q Equipment stock the full range of parts to suit the following pumps:-

SC Pumps

1 / ¾ SC
3 / 2 SC
4 / 3 SC
6 / 4 SC
8 / 6 SC
10 / 8 SC

ASC Pumps

1 / ¾ ASC
3 / 2 BSC
4 / 3 CSC
6 / 4 DSC
8 / 6 ESC
10 / 8 ESC

M Pumps

10 / 8 EM
10 / 8 FM

AH Pumps

1 / 1 ½ BAH
2 / 1 ½ BAH
3 / 2 CAH
4 / 3 CAH
4 / 3 DAH
6 / 4 DAH
6 / 4 EAH
8 / 6 EAH
8 / 6 FAH
10 / 8 FAH
10 / 8 GAH
12 / 10 FAH
12 / 10 GAH
14 / 12 FAH
14 / 12 GAH

Sump Pumps

40 PV SP
40 PV SPR
65 QV SP
65 QV SPR
100 RV SP
100 RV SPR
150 SV SP
200 SV SP
40 VC GPS
40 VCH GPS
65 VD GPS
65 VDH GPS
100 VE GPS
100 VEH GPS

HX Pumps

8 / 6 FHX
8 / 6 FFHX
8 / 6 FAHX

Dredge Pumps

6 / 4 DG
8 / 6 EG
8 / 6 FGH
10 / 8 FG
10 / 8 FGH
10 / 8 SGH
12 / 10 FG
12 / 10 GG
12 / 10 GGH

TC Pumps

2 / 2 QV TC
3 / 3 QV TC
4 / 4 QV TC
6 / 6 RV TC

HH Pumps

3 / 2 DHH
4 / 3 EHH

WE WILL MEET OR BEAT ANY COMPETITORS PRICES



PARTS TO SUIT AH PUMPS



PARTS TO SUIT TC PUMPS



PARTS TO SUIT ASC PUMPS



PARTS TO SUIT SUMP PUMPS



PARTS TO SUIT SC PUMPS

WE WILL MEET OR BEAT ANY COMPETITORS PRICES

SLURRY PUMP PARTS



Gland Packing



Shaft Sleeves



Impellers



Liners



Expellers



Stuffing Boxes



Shafts



Joint Rings

OUR RANGE OF MATERIALS INCLUDE

- | | |
|---------------------------------------|--------------------|
| - 420 Martenstetic Stainless Steel | - Natural Rubber |
| - 316 Stainless Steel | - Polyurethane |
| - Chrome Alloy | - Tungsten Carbide |
| - Ductile Iron | - Neoprene |
| - Butyl | - Ryton |

WE WILL MEET OR BEAT ANY COMPETITORS PRICES

WE CAN HELP YOUR BUSINESS...

- Having trouble getting parts for your slurry pump?
We hold your parts in stock
- All parts are held in stock ready for immediate delivery
- Want quality parts and save money
- Australian parts for Australian conditions
- Complete pumps are also available

OTHER PARTS AVAILABLE UPON REQUEST

PHONE 07 3879 3335

WE WILL MEET OR BEAT ANY COMPETITORS PRICES



SC3153: 3192 x 8132 RCR TOMLINSON SCRUBBER/TROMMEL:
Complete with Twin 185 KW Drives, Base Frame & Discharge
Trommel. Condition: Very Good

WARMAN PUMPS



We have the largest stock of second hand
WARMAN PUMPS in Australia. Offered fully
Refurbished in sizes from 1x3/4 up to
20/20. In the following models
SC,AH,HH,M,L,D,G,GH,TC,GPS,SP.



CJ3077: 55" x 32" TEREX
JAQUES JAW CRUSHER: Single
Toggle - Model JW55.
Condition: Unused



FE3054: 2400 x 7000 MINSPEC
APRON FEEDER: 30 KW
Planetary Drive – Spill Conveyor.
Condition: Unused

INDEX

| | | |
|----|---------------------------------------|----|
| AT | ALTERNATORS GENERATORS | 6 |
| CC | CONE AND GYRO CRUSHERS | 6 |
| CG | ROD, BALL, GRINDING MILLS | 8 |
| CI | IMPACT CRUSHERS..... | 9 |
| CJ | JAW CRUSHERS | 9 |
| CP | CRUSHING PLANTS..... | 11 |
| CR | ROLLS CRUSHERS | 11 |
| CS | CRUSHER SPARES | 12 |
| CV | CONVEYORS | 12 |
| CY | CYCLONES | 15 |
| DP | DREDGES & PIPES | 16 |
| EB | ELECTRICAL SWITCHBOARDS | 16 |
| EL | TRANSFORMERS | 19 |
| EM | ELECTRIC MOTORS SQUIRREL CAGE | 23 |
| ER | ELECTRIC MOTORS SLIPRING | 29 |
| ES | ELECTRIC MOTORS - DC AND OTHERS | 31 |
| ET | ELECTRIC MOTOR STARTERS | 31 |
| EZ | ELECTRICAL - MISCELLANEOUS | 31 |
| FA | FANS & BLOWERS | 32 |
| FE | FEEDERS..... | 32 |
| GB | GEAR BOXES..... | 33 |
| GM | GEARED MOTORS | 35 |
| KD | KILNS AND DRYERS | 36 |
| LE | LABORATORY EQUIPMENT | 38 |
| MG | MAGNETS | 38 |
| MP | MINING PROCESS | 39 |
| MX | MIXERS | 40 |
| PU | PUMPS..... | 41 |
| SC | SCREENS..... | 51 |
| SL | SILOS, TANKS & HOPPERS | 53 |
| SU | SUNDRIES | 54 |
| VA | VALVES..... | 55 |
| WE | WASHING EQUIPMENT..... | 56 |
| WH | WINCHES..... | 56 |

M & Q EQUIPMENT for themselves and for vendors of any items listed
For whom they act give notice that:-

- (1) "All information given in relation to any item contained in this catalogue or given orally is given without responsibility.
- (2) Intending purchasers should satisfy themselves as to the accuracy of all the information given, by their own inspection, research or as otherwise necessary."

ALTERNATORS AND GENERATOR SETS

- AT3056 **875 KVA Caterpillar Generator Set:** CAT D399 Engine
- 490 Hrs - Complete with Control Panel, Heat Exchanger
- Ex Standby. Condition: Excellent.
- AT3052 **625 KVA Caterpillar Generator Set:** Cat D398 Engine -
1400 Hours - Complete with Control Panel, Exhaust & Fuel
Tank. Condition: Excellent.
- AT3051 **1700 KVA Perkins / FG Wilson Generator Set:** Perkins V16
Quad Turbo Engine - 1300 Hours - Complete with Control
Panel and Exhaust. Condition: Excellent.
- AT3050 **1700 KVA Perkins / FG Wilson Generator Set:** Perkins V16
Quad Turbo Engine - 1267 Hours - Complete with Control
Panel and Exhaust. Condition: Excellent.
- AT3047 **150 KVA Dorman Generator Set:** Dorman Model 6Q
Coupled to McColl Alternator. Skid Mounted - Ex Standby
Set - New Batteries - Serviced.
- AT3039 **350 KVA Acoustic Cabinet:** 2.6 x 5.2 x 3m - Sound Proof
Cover to suit up to 450 KVA Generator Set. Condition: Very
Good.

CONE AND GYRATORY CRUSHERS

- CC3089 **Crusher Vibration Mounts:**
- CC3088 **36" STD HD Symons Cone Crusher:** Complete with Base,
Frame, Motor & Lube System. Condition: Overhauled.
- CC3085 **54" FH Cedar Rapids Eljay Cone Crusher:** Model RC54FH
Condition: Good.
- CC3082 **800 Kawasaki Cone Crusher:** Model KM-1008G - 100mm
Feed Opening. Condition: Very Good.
- CC3081 **1000 Kawasaki Cone Crusher:** Model KU-1000 (1000mm
x 350mm) - Ultra Coarse Gyratory Crusher - Complete
with Hydraulic System & Accumulator. Condition: Very
Good.
- CC3080 **1000 Kawasaki Cone Crusher:** Model KFS-1000L (1000mm
x 60mm) - Super Fine - Complete with Hydraulic System
& Accumulator. Condition: Very Good.
- CC3079 **36" STD HD Minyu Cone Crusher:** Model MCC36 -
Complete with Base Frame. Condition: Very Good.
- CC3070 **36" SH HD Pegson Cone Crusher:** Unit is complete with
Lube Tank & Stand. Condition: Good.
- CC3065 **24" STD HD Nordberg Symons Cone Crusher:** 2' -
Complete with Lube System. Condition: Unused.
- CC3063 **36" STD HD Nordberg Symons Cone Crusher:** 3' - Fitted
with Hydraulic Adjustment and Lube System.
Condition: Unused.

THIS IS A SELECTION ONLY OF EQUIPMENT AVAILABLE



AT3050: 1700 KVA PERKINS/FG WILSON GENERATOR SET:
Perkins V16 Quad Turbo Engine – 1267 Hours – Complete with
Control Panel and Exhaust. Condition: Excellent



CG3064: 4200 x 6800 MORGARDSHAMMER SAG MILL: Complete
with 1540 KW DC Drive – Gear Box, Pinion, Girth Gear, Rubber Liners,
Starters, Transformer & Switch Room. Condition: Very Good



CI3047: 8100 METSO BARMAC VERTICAL SHAFT IMPACTOR:
B8100DD – Dual Drive – Complete with Anti Vibration Frame.
Condition: Very Good



CI3049: VS100 RR AUSPACTOR VSI:
Complete with 185 KW Weg Motor

- CC3062 **36" SH HD Nordberg Symons Cone Crusher:** 3' - Fitted with Hydraulic Adjustment and Lube System. Condition: Unused.
- CC3061 **66" SH HD Nordberg Symons Crusher:** 5 1/2' - Fitted with Hydraulic Adjustment & Locking and Lube System. Condition: Unused.
- CC3060 **66" STD HD Nordberg Symons Cone Crusher:** 5 1/2' - Fitted with Hydraulic Adjustment & Locking and Lube System. Condition: Unused.
- CC3059 **51" STD HD Nordberg Symons Cone Crusher:** 4 1/4' - Fitted with Hydraulic Adjustment & Locking and Lube System. Condition: Unused.
- CC3058 **51" SH HD Nordberg Symons Cone Crusher:** 4 1/4' - Fitted with Hydraulic Adjustment & Locking and Lube System. Condition: Unused.
- CC3056 **84" STD HD Nordberg Symons Cone Crusher:** 7' - Fitted with Hydraulic Adjustment & Locking and Lube System. Condition: Unused.
- CC3046 **4 1/4" STD HD Symons Cone Crusher:** Complete with Some Spares. Condition: Average.
- CC3044 **60" Allis Chalmers Hydrocone:** 3" Feed Opening

BALL, ROD, GRINDING MILLS

- CG3067 **7300 x 12500 Polysius Ball Mill:** 2 Units Available - Complete with 14MW Installed Drive, Metal Liners & Full Auxiliary Equipment. Condition: Unused.
- CG3066 **2743 x 2743 Marcy/Morgardshammer Ball Mill:** 9' x 9' - Complete with Change 400 KW 415 Volts Motor, Gear Box, Feed Spout, Trommel & Girth Gear Guards. Condition: Good.
- CG3065 **4420 x 8800 ANI Ruwolt Ball Mill:** Complete with 2500 KW Drive, Gear Box, Pinion, Girth Gear, Sole Plates, Trommel, Inching Drive. Condition: Very Good.
- CG3064 **4200 x 6800 Morgardshammer Sag Mill:** Complete with 1540 KW DC Drive - Gear Box, Pinion, Girth Gear, Rubber Liners, Starters, Transformer & Switch Room. Condition: Very Good.
- CG3062 **5300 x 5600 Vickers Ruwolt AG Mill:** Complete with 1700 KW Synchronous Drive - 3.3 KV - Pinion, Clutch, Inching Drive & Discharge Trommel. Condition: Good.
- CG3061 **6200 x 9500 Citic Ball Mill:** Complete with 6000 KW Drive Motor, Gear Box, Pinion & Girth Gear. Condition: Unused.
- CG3060 **4000 x 1600 Svedala Sag Mill:** Complete with 250 KW Drive - Liners - Manuals & all Associated Equipment. Condition: As New.

THIS IS A SELECTION ONLY OF EQUIPMENT AVAILABLE

- CG3056 **40mm Magotteaux Ball Mill Balls:** 4 Drums Available. Condition: Unused.
- CG3053 **1600 x 2500 Lih Shan Ball Mill:** Unlined - Overflow Discharge - 90 KW - Roller Bearing. Condition: Excellent.
- CG3051 **2400 x 3300 Newell Dunford Ball Mill:** Rubber Lined - Grate Discharge - 224 KW Drive. Condition: Very Good.
- CG3047 **2896 x 4873 Marcy Ball Mill:** 9'6" x 13' - Complete with 525 KW Drive - David Brown 3.051 to 1 Gear Box - Spare New Girth Gear & Pinion. Condition: Very Good.
- CG3042 **1200 x 4800 Clyde Caruthers Ball Mill:** Complete on Skid Base with 55 KW Drive - Metal Lined. Condition: Excellent.
- CG3040 **90 KW Yaskawa Vibro Mill:** Type YAMT-1200LNVSF - Maximum force 28T - Housed in Accoustic Enclosure.

IMPACT CRUSHERS

- CI3050 **APKM 1013 Hazemag Horizontal Shaft Impactor:** Mounted on Stand with Electric Motor, Hydraulic System & Discharge Conveyor. Condition: Very Good
- CI3049 **VS100 RR Auspactor VSI:** Complete with 185 KW Weg Motor.
- CI3048 **VI200 Metso Barmac Vertical Shaft Impactor:** Complete with 132 KW Drive. Condition: Unused.
- CI3047 **8100 Metso Barmac Vertical Shaft Impactor:** B8100DD - Dual Drive - Complete with Anti Vibration Frame. Condition: Very Good.
- CI3042 **500 x 400 Pallmann Knife Mill:** Series 400 - Model PS4-5 - F4/F5 - Stainless Steel Construction. Condition: As New.

JAW CRUSHERS

- CJ3078 **54" x 32" Terex Jaques Jaw Crusher:** Single Toggle - Model JW54. Condition: Very Good.
- CJ3077 **55" x 32" Terex Jaques Jaw Crusher:** Single Toggle - Model JW55. Condition: Unused.
- CJ3072 **42" x 32" Kawasaki Jaw Crusher:** Double Toggle - Roller Bearing - Model KD-4232G. Condition: Excellent.
- CJ3071 **30" x 20" Jaques Jaw Crusher:** Single Toggle.
- CJ3070 **48" x 42" Allis Chalmers Jaw Crusher:** Double Toggle. Condition: Very Good.
- CJ3068 **48" x 42" Kawasaki Jaw Crusher:** Double Toggle - Roller Bearing. Condition: Good.
- CJ3063 **42" x 36" Kue Ken Jaw Crusher:** Double Toggle - Roller Bearing - Big Bite Model 126. Condition: Excellent.

THIS IS A SELECTION ONLY OF EQUIPMENT AVAILABLE



CI3048: VI200 METSO BARMAC VERTICAL SHAFT IMPACTOR: Complete with 132 KW Drive. Condition: Unused



CR3025: 350 X 900 VAN GELDER ROLLS CRUSHER: Double Drum - Complete with Twin 5.5 KW Drives. Unit is Skid Mounted. Condition: Very Good



CJ3078: 54" x 32" TEREX JAUQUES JAW CRUSHER: Single Toggle - Model JW54. Condition: Very Good



CP3023: 42" x 32" CEDARAPIDS MOBILE CRUSHING PLANT: Complete with Tri Axle Trailer, Feeder, Drive Motor & Discharge Conveyor. Condition: Very Good



CV3090: 600 x 12M M & Q RADIAL STACKER: Complete with 4 KW Electric Drive - DOL Electric Starter - Lanyard Switches

- CJ3060 **36" x 24" Kue Ken Jaw Crusher:** Double Toggle - Roller Bearing. Condition: Good.
- CJ3056 **42" x 30" Pioneer Jaw Crusher:** Single Toggle.
- CJ3052 **48" x 42" Kobe Allis Chalmers Jaw Crusher:** Double Toggle - Roller Bearing. Condition: Very Good.
- CJ3048 **60" x 48" Kawasaki Jaw Crusher:** Single Toggle Roller Bearing - Wear Parts look 80 to 90 Percent. Condition: Very Good.
- CJ3047 **48" x 42" Kobe Allis Jaw Crusher:** Double Toggle - Roller Bearing - Model 42-48DT. Condition: Excellent.
- CJ3043 **42" x 30" Jaques Jaw Crusher:** Single Toggle Roller Bearing - Complete with Spares. Condition: Excellent.
- CJ3039 **42" x 30" Kue Ken Jaw Crusher:** Double Toggle Roller Bearing - Complete with Motor. Condition: Excellent.

CRUSHING PLANTS

- CP3025 **42 x 30 Brown Lennox Mobile Crushing Plant:** Complete with Quad Axle Trailer, CAT Engine, Vibrating Grizzly Feeder & Discharge Conveyor. Condition: Very Good.
- CP3023 **42" x 32" Cedarapids Mobile Crushing Plant:** Complete with Tri Axle Trailer, Feeder, Drive Motor & Discharge Conveyor. Condition: Good.
- CP3016 **39" Kemco Tertiary Crushing Plant:** Mobile - Trailer Mounted CTF 39-3R Complete with Electrics. Condition: Good.
- CP3011 **42" x 30" Crushing Plant:** Consisting of 42" x 30" ST Jaques Jaw Crusher, ROM Bin, Apron Feeder, Scalper, 4 1/4' Symons & 16' x 6' x 3D Cedar Rapids Screen. Condition: Very Good.

ROLLS CRUSHERS

- CR3027 **36" x 48" RB-P SHUMAR ROLLS CRUSHER:** Primary - Double Drum - Complete with Twin 30 KW Drives. Condition: Very Good
- CR3026 **500 MMD SIZER:** Set up on Stand - Complete with Drive Motor & 6 Tooth Segments - Triple Length Case Series. Condition: Excellent.
- CR3025 **350 x 900 Van Gelder Rolls Crusher:** Double Drum - Complete with Twin 5.5 KW Drives. Unit is Skid Mounted. Condition: Very Good.
- CR3021 **500 MMD Sizer:** 4 Tooth Segments. Condition: Very Good.
- CR3019 **SIZE D Jaques Drum Crusher:**

THIS IS A SELECTION ONLY OF EQUIPMENT AVAILABLE

CRUSHER SPARES

- CS3020 **4 ¼ STD HD M & Q Manganese:** Bowl Liner – Medium to suit Coarse Bowl – Part No. 4830-4341. Condition: Unused
- CS3019 **4 1/4' SH HD Nordberg Symons Manganese:** Bowl Liner - Concave Liner Fine Profile - Part No. 10-4829-8941 Condition: Unused.
- CS3018 **4 1/4' SH HD Nordberg Symons Manganese:** Mantle Liner - Part No. 5013-4801. Condition: Unused.
- CS3016 **4 1/4 SH HD Nordberg Symons Manganese:** Bowl Liner - Concave Liner Fine Profile - Part No. 10-4829-8941 Condition: Unused.
- CS3015 **C200 Kue Ken Manganese:** Full Set Jaw Liners. Condition: New.
- CS3014 **HP300 Metso/Nordberg Manganese:** Standard Medium Mantle - Part No. 5013-2073. Condition: Unused.
- CS3013 **HP300 Metso/Nordberg Manganese:** Standard Medium Concave - Part No. 4829-4638. Condition: Unused.
- CS3009 **3' STD Symons Manganese:** Standard Coarse Concave - Part No. 4829-6576. Condition: New.
- CS3006 **48 x 42 DT Jaques Jaw Plates:** Part Numbers AW1562; AW1563; AW1564; AW1565. Condition: Unused.
- CS3005 **51" Kue Ken Crown Wheel & Pinion:** Unused.
- CS3004 **HP700 Metso Manganese:** Standard Fine Concave - Part No. 4831-4373. Condition: Unused.
- CS3003 **HP700 Metso Manganese:** Standard Fine Mantle - Part No. 5014-3849. Condition: Unused.
- CS3002 **84" STD HD ANI Bradken Distribution Plate:** Condition: Unused.
- CS3001 **84" STD HD Nordberg Head Nut:** Part No. 5168-8131 Condition: Unused.

CONVEYORS

- CV3094 **1200 x 24M Striker Radial Stacker:** Electric Drive – Model ST2412 – Wheel Mounted. Condition: Excellent
- CV3093 **1200 x 24M Striker Radial Stacker:** Electric Drive – Model ST2412 – Wheel Mounted. Condition: Excellent
- CV3092 **600 x 15M Finlay Radial Stacker:** Hydraulic Drive – Hydraulic Luff & p & Down. Condition: Good
- CV3091 **600 x 15M Finlay Radial Stacker:** Hydraulic Drive – Hydraulic Luff Up & Down. Condition: Good
- CV3090 **600 x 12M M & Q Radial Stacker:** Complete with 4KW Electric Drive - DOL Electric Starter - Lanyard Switches

THIS IS A SELECTION ONLY OF EQUIPMENT AVAILABLE

Conveyors Continued

- CV3089 **600 x 12M M & Q Radial Stacker:** Complete with 4KW Electric Drive - DOL Electric Starter - Lanyard Switches.
- CV3088 **600 x 15 M M & Q Radial Stacker:** Complete with 4KW Electric Drive - DOL Electric Starter, Lanyard Switches.
- CV3087 **750 x 18M Conveyor:** Complete with Drive Motor & Torque Arm, Gear Box, Lagged Head Drum & Tail Take up. Condition: Excellent.
- CV3080 **650 x 12M Precision Screen Radial Stacker:** Hydraulic Drive - Hydraulic Raise/Lower. Condition: Ok.
- CV3079 **600 x 12M Finlay Radial Stacker:** Hydraulic Drive Condition: Good.
- CV3078 **75 KW Flender / Tefco Conveyor Drive:** Consisting of Flender Gear Box 131RPM Output - Head & Tail Drum Face 1700 x 780 Dia. Condition: As New.
- CV3077 **800 DIA Conveyor Material Flinger:** To suit 750 Belt - Complete with Hydraulic Drive. Condition: Good.
- CV3076 **750 x 4.1M M & Q Conveyor:** Complete with 2.2 KW Gear Motor & Large Head Drum. Condition: Excellent.
- CV3074 **600 x 11M M & Q Conveyor:** Complete with Walkway, 3 KW Drive Motor & Gear Box. Condition: Good.
- CV3073 **750 x 7.5M Conveyor:** Stringer Type - Hydraulic Drive. Condition: Good.
- CV3068 **200 KW Flender Conveyor Drive:** Consisting of Pope 200 KW 4 Pole Motor coupled to Flender KZA320 Ratio 19.2 to 1 Gear Box driving Fox Pulley 1150 Face - 900 Diameter. Condition: Very Good.
- CV3067 **900 x 110M Apex Conveyor Belt:** 4 Ply - 7mm Top Cover - 2mm Bottom Cover. Condition: Unused.
- CV3066 **600 x 11M Conveyor:** Stringer Type - Heavy Construction. Condition: Very Good.
- CV3065 **600 x 6M Conveyor:** Stringer Type. Condition: Good.
- CV3064 **750 x 40M Conveyor:** Truss Type - One side Walkway - Complete with Take up Tower. Condition: Very Good.
- CV3062 **600 x 25M Conveyor:** Truss Type - in 2 x 12.5 Metre Sections - New Rollers, New Belt. Condition: New.
- CV3061 **200 x 5500 Screw Conveyor:** Heavy Duty.
- CV3059 **1500 x 67M Conveyor Belt:** 4 Ply - 6mm Top Cover - 2mm Bottom Cover. Condition: Unused.
- CV3055 **900 x 67M Conveyor:** Enclosed Truss Type - Complete with Head & Tail Drum - Single Side Walkway. Condition: Very Good.

THIS IS A SELECTION ONLY OF EQUIPMENT AVAILABLE



CV3094: 1200 x 24M STRIKER RADIAL STACKER: Electric Drive
- Model ST2412 - Wheel Mounted. Condition: Excellent



CV3088: 600 x 15M M & Q RADIAL STACKER: Complete with 4 KW
Electric Drive - DOL Electric Starter, Lanyard Switches



CY3063: 24" LINATEX CYCLONE: Complete with Fishtail.
Condition: Excellent



DP3022: 10 x 8 SGH Dredge Cutter Suction - 10/8 SGH Warman Pump
- K19 Cummins - Winch propelled. Condition: Very Good

- CV3046 **500 KW Bliss Fox Conveyor Drive Head:** Model 3000
- Belt Speed 425 ft/minute. Complete with 500 KW Slipring Motor.
- CV3039 **500 x 14.5 M Screw Conveyor:** Fitted with Fenner G Torque Arm Gear Box.
- CV3031 **1050 Conveyor Belting:** ST800 - Steel Core - 2400 metres available.
- CV3014 **900mm Conveyor Drive:** Consists of 36" head drum bearing assembly and Hanson RHC23F reduction box and Brook 75KW Motor.

CYCLONES

- CY3068 **24" Linatex Cyclone:** Polyurethane Lined.
Condition: Excellent / Overhauled.
- CY3067 **24" Linatex Cyclone:** Polyurethane Lined.
Condition: Excellent / Overhauled.
- CY3065 **6" Warman Cyclone:** Model 6C-FSA - Rubber Lined
- Complete with Fishtail.
- CY3064 **250 Warman Cyclone:** Cavex 250 CVX10.
Condition: Unused.
- CY3063 **24" Linatex Cyclone:** Complete with Fishtail.
Condition: Excellent.
- CY3060 **675mm (27") Austral Cyclone:** New.
- CY3058 **3" Austral Cyclone:** Rubber Lined - Capacity .5 to 1.5 Litres/Second @ 12 Micron Cut. Condition: New.
- CY3057 **20" Warman Cyclone:** Model CS - Rubber Lined.
- CY3049 **20" Krebs Cyclone:** Model DS20 LSB - Rubber Lined.
Condition: Very Good.
- CY3042 **20" Warman Cyclone:** Model RE - Rubber Lined
- Complete with Spigot. Condition: Good.
- CY3028 **3" Warman Cyclone:** Rubber Lined
- CY3020 **10" Warman Cyclone:** 10CE - 4 Off Available.
Condition: Good.



CY3058: 3" AUSTRAL CYCLONE:
Rubber Lined - Capacity .5 to 1.5
Litres/Second @ 12 Micron Cut.
Condition: New

THIS IS A SELECTION ONLY OF EQUIPMENT AVAILABLE

DREDGES AND PIPE

- DP3032 **8 x 6 Custom Dredge:** Warman Pump - 8.71 GM Engine - Cutter Head. Condition: Good.
- DP3031 **4.4M x 8.0M M & Q Barge:** Complete with Open Cabin. Condition: Good
- DP3030 **1000 Ton The Jindalee Hopper Barge:** 49m Long x 12m Wide - 2 x 500 Ton Hoppers. Condition: Good
- DP3029 **8 x 6 Mudcat Dredge:** Model MC-915 - Complete with 8 x 6 Clyde Morris Pump, 6-71 GM Diesel Motor & Auger Style Cutting Head. Condition: Good.
- DP3028 **3.6M x 8M Work Boat:** Fitted with Twin 250 HP Suzuki Motors - Hydraulic Hiab Crane - In Survey. Condition: Good.
- DP3027 **8 x 6 FGH Newman Dredge:** Suction Style - 8/6 FGH Warman Pump - Iveco Marine Engine - Winch Propelled. Condition: Very Good.
- DP3026 **8" Sykes Dragflow Cutter Dredge Pump:** Pump Model HY85B - Complete with Twin EXHY 20 Excavators, Hydraulic Lines & Diesel Power Pack. Hire Unit. Condition: As New.
- DP3022 **10 x 8 SGH Dredge:** Cutter Suction - 10/8 SGH Warman Pump - K19 Cummins - Winch propelled. Condition: Very Good.
- DP3015 **Dredge Anchor:** 2200 Long x 1500 Wide x 900 High.

ELECTRICAL SWITCHBOARDS & COMPONENTS

- EB3075 **12KV Schneider Electric Ring Main Unit:** Model RN2C - 13.8 KV - 630 Amp - SF6 Insulated. Condition: As New.
- EB3074 **66 KV GEC Alsthom Circuit Breaker:** 2000 Amp - FXT9 - Complete with Controller. Condition: Very Good
- EB3073 **630 AMP F & G Ring Main Unit:** 24 KV. Condition: Very Good.
- EB3072 **3200 AMP ABB Circuit Breaker:** Sace E3N32 - 690 Volts - Complete with Enclosure. Condition: Very Good.
- EB3071 **1250 AMP Mechanical Services DB Board:** 1000V - 1250 Amp Incoming Circuit Breaker - 5 x 400 Amp Outgoing Complete with Galvanised Frame. Condition: Very Good.
- EB3069 **RM6 Schneider Ring Main Unit:** 2 KV - 630 Amp Condition: New / Unused.
- EB3067 **22 KV Merlin Gerin Metering Panel:** Consisting of Incoming Switch - Metering - Main Circuit Breaker - 2 Outgoing Feeder Switches. Condition: Excellent.
- EB3063 **630 AMP ABB Ring Main Unit:** Type: CCV - 24 KV. Condition: As New.
- EB3062 **6.6 KV ABB/IGRANIC Switch:** 6600 Volts Isolating Switch. Condition: Very Good.

Electrical Switchboards & Components Continued

- EB3058 **630 AMP NGK Stanger Gas Switch:** 12KV - Manually Operated - Type EGS. Condition: Unused.
- EB3056 **22 KV ABB Metering Panel:** Complete with 100/200-5 CT's. Condition: Excellent.
- EB3054 **160 AMP Merlin Gerin Distribution Board:** 160 Amp Main Circuit Breaker.
- EB3050 **400 AMP Merlin Gerin Distribution Board:** 400 Amp Main Breaker
- EB3049 **RM6 Merlin Gerin Ring Main Unit:** 12 KV - 630 AMP - Rated S/C 20 KA - SF6 Insulated - Complete with Outdoor Enclosure. Condition: Excellent.
- EB3048 **630 AMP Tamco Circuit Breaker:** 12 KV - 630 AMP - 20 KA - Outdoor Unit. Condition: Excellent.
- EB3047 **1600 AMP Terasaki Electric Air Circuit Breaker:** Model AT16. Condition: Excellent.
- EB3045 **1250 AMP Merlin Gerin Circuit Breaker:** Master Pact M12 H1. Condition: Excellent.
- EB3044 **630 AMP ABB Circuit Breaker:** Series 2 - SDAF14 - 12 KV. Condition: Very Good.
- EB3043 **630 AMP ABB Ring Main Unit:** Type - SDAF143 - 3 Way - 12 KV. Condition: Very Good.
- EB3041 **800 AMP Reyrolle Circuit Breaker:** Rated 12KV - 25 KA Condition: Unused.
- EB3040 **800 AMP Reyrolle Circuit Breaker:** Rated 12 KV - 25 KA Condition: Unused.
- EB3039 **800 AMP Reyrolle Circuit Breaker:** Rated 12 KV - 25 KA Condition: Unused.
- EB3035 **2500 AMP Kennedy-Taylor Switchboard:** Current 2500 Amp - Voltage 415V. Condition: Good.
- EB3033 **400 AMP Merlin Gerin Fused Contactor:** 3.6 KV Rated. Condition: Very Good.
- EB3032 **2500 AMP Nilsen Switchboard:** Current 2500 Amp - Voltage 415V. Condition: Very Good.
- EB3026 **Elden Distribution Board:** 1000 Volt - 2 x 400 Amp Circuit Breakers - 2 x 160 Amp Circuit Breakers. Condition: Good.
- EB3025 **YSF6 Yorkshire Circuit Breaker:** 12 KV - 1250 Amps - 5 Units Available. Condition: Excellent Condition.
- EB3024 **YSF6 Yorkshire Circuit Breaker:** 12 KV - 630 Amp - 9 Units Available. Condition: Excellent.
- EB3022 **RM 6 Merlin Gerin Ring Main Unit:** 12 KV - 630 Amps - Rated S/C Current 25 KA. SF6 Insulated - Four Fuse Switches. Condition: New.
- EB3016 **630 AMP ABB Circuit Breaker:** Type RVC 3.6 / 7.2 KV - Fitted with Midos MCGC Overcurrent & Earth Fault Relay. Condition: New.

THIS IS A SELECTION ONLY OF EQUIPMENT AVAILABLE

THIS IS A SELECTION ONLY OF EQUIPMENT AVAILABLE



EB3024: YSF6 YORKSHIRE CIRCUIT BREAKER: 12 KV –in both 1250 Amp & 630 Amp – 9 Units Available. Condition: Excellent



EB3069: RM6 SCHNEIDER RING MAIN UNIT: 12 KV - 630 Amp. Condition: New / Unused



EB3067: 22 KV MERLIN GERIN METERING PANEL: Consisting of Incoming Switch - Metering - Main Circuit Breaker - 2 Outgoing Feeder Switches. Condition: Excellent



EL3258: 750 KVA ABB KIOSK TRANSFORMER: 11000 to 433 Volts - Dyn11 - Complete with HV Switch & LV Fuses



EL3202: 1500 KVA ABB TRANSFORMER: 11000 to 415 Volts - Dyn11, Condition: Excellent



EL3314: 4000 KVA SYCON SUB STATION: 22,000 to 433 Volts – Step Up/Step Down – Complete with HV & LV Switchgear. Condition: As New

TRANSFORMERS

- EL3313 **4000 KVA SYCON SUB STATION:** 22,000 to 433 Volts – Step Up/Step Down – Complete with HV & LV Switchgear. Condition: As New
- EL3314 **4000 KVA SYCON SUB STATION:** 22,000 to 433 Volts – Step Up/Step Down – Complete with HV & LV Switchgear. Condition: As New
- EL3311 **1500 KVA Schneider Kiosk Transformer:** 11000 to 433 Volts – Dyn11 – Complete with HV RM6 RMU – LV Circuit Breaker & DB Section.
- EL3307 **500 KVA Schneider Transformer:** 22000 to 433 Volts - Dyn11.
- EL3306 **630 KVA Wilson Transformer:** 415 to 11000 Volts - Ynd11
- EL3305 **1000 KVA Etel Transformer:** 1000 to 415 Volts - YNyn0 - Complete with Skid Base & 1000 Volt Switchboard.
- EL3304 **1500 KVA Schneider Kiosk Transformer:** 11000 to 433 Volts - Dyn11 - Complete with HV RM6 RMU - LV DB Board.
- EL3303 **750 KVA ABB Transformer:** 33000 to 433 Volts - Dyn11.
- EL3302 **2500 KVA EPE Transformer:** 11000 to 415 Volts - Dyn11 - Complete with Galvanised Skid & Mesh Fence.
- EL3301 **2500 KVA EPE Transformer:** 11000 to 415 Volts - Dyn11 - Complete with Galvanised Skid & Mesh Fence
- EL3299 **8000 KVA GEC ALSTHOM Transformer:** 22000 to 6600 Volts - Dyn11
- EL3298 **6000 KVA Power Plant & Process Substation:** 66000 to 11000 Volts - Dyn11 - Complete with 66KV Circuit Breaker, 66KV CT's & 11 LV Circuit Breaker.
- EL3297 **1500 KVA ABB Transformer:** 22000 to 433 Volts - Dyn11.
- EL3296 **1500 KVA ABB Transformer:** 22000 to 433 Volts - Dyn11.
- EL3294 **1500 KVA Schneider Kiosk Transformer:** 11000 to 433 Volts - Dyn11 - Complete with HV RM6 RMU - LV Circuit Breaker.
- EL3292 **2000 KVA ABB Transformer:** 33000 to 433 Volts - Dyn11.
- EL3291 **500 KVA M & Q Equipment Transformer:** 1000 to 415 Volts - YNyn0 - Complete with Skid Base.
- EL3290 **1600 KVA Schneider Transformer:** 11000 to 415 Volts - Dyn11.
- EL3288 **1600 KVA Schneider Transformer:** 11000 to 415 Volts - Dyn11.
- EL3284 **2000 KVA Transformer:** 11000 to 415 Volts - YNyn0.
- EL3282 **1000 KVA Transformer:** 11000 to 415 Volts - Dyn11.
- EL3281 **150 KVA Siros/Amp Control Substation:** 415 to 1000 Volts - Ynd11 - Complete with Skid Base & 1000 Volt DB Board.
- EL3278 **600 KVA Galaxy Transformers Sub Station:** 11000/6600 to 1000 Volts - Dyn11 yn11.

THIS IS A SELECTION ONLY OF EQUIPMENT AVAILABLE



EL3311: 1500 KVA SCHNEIDER KIOSK TRANSFORMER:
11000 to 433 Volts – Dyn11 – Complete with HV RM6 RMU
– LV Circuit Breaker & DB Section



EL3229: 2000 KVA SCHNEIDER TRANSFORMER 6600 to 433 Volts – Dyn11



EL3309: 500 KVA ABB TRANSFORMER 11000 to 433 Volts – Dyn11



EL3290: 1600 KVA SCHNEIDER TRANSFORMER: 11000 to 415 Volts – Dyn11



EL3305: 1000 KVA ETEL TRANSFORMER 1000 to 415 Volts – YNyn0 – Complete with Skid Base & 1000 Volt Switchboard



EL3291: 500 KVA M & Q EQUIPMENT TRANSFORMER:
1000 to 415 Volts – YNyn0
– Complete with Skid Base



EL3180: 1000 KVA ABB TRANSFORMER: 11000 to 433 Volts – Dyn11

- EL3276 15,000 KVA Westinghouse Transformer:** 66000 to 11000 Volts – Dyn – Complete with OLTC.
- EL3275 700 KVA Rutherford Power Sub Station:** 11000 to 1000 Volts – Dyn11 – Complete with HV & LV Switch Gear and Galvanised Skid Base.
- EL3274 1500 KVA Cneke Kiosk Transformer:** 11000 to 415 Volts – Dyn11 – Dry Type – Complete with HV Switch & LV Circuit Breaker.
- EL3273 10,000 KVA Westralian Transformer:** 66000 to 6600 Volts – Complete with OLTC – Dyn1
- EL3271 3000 KVA Alstom Transformer:** 11000 to 433 Volts – Dyn11.
- EL3268 300 KVA Wilson Substation:** 11000 / 6600 to 433 Volts – Dyn11 – Complete with Skid Base.
- EL3266 400 KVA Schneider Transformer:** 11000 to 433 Volts – Dyn11 – Dry Type.
- EL3265 1500 KVA Wilson Transformer:** 22000 to 3300 Volts – Dyn11.
- EL3263 1500 KVA Wilson Transformer:** 22000 to 433 Volts – Dyn11.
- EL3262 2500 KVA Aset Kiosk Transformer:** 22000 to 433 Volts – Dyn11
- EL3260 500 KVA ABB Kiosk Transformer:** 11000 to 433 Volts – Dyn11.
- EL3258 750 KVA ABB Kiosk Transformer:** 11000 to 433 Volts – Dyn11 – Complete with HV Switch & LV Fuses.
- EL3256 300 KVA Universal Substation:** 1000 to 415 Volts – Dyn11 – Complete with Skid Base.
- EL3253 1000 KVA Schneider Transformer:** 11000 to 433 Volts – Dyn11.
- EL3249 2000 KVA Wilson Transformer:** 11000 to 1100 Volts – Dyn11.
- EL3244 2000 KVA Wilson Transformer:** 11000 to 433 Volts – Dyn11.
- EL3239 2000 KVA Wilson Kiosk Transformer:** 11000 to 433 Volts
- EL3238 2000 KVA Schneider Transformer:** 6600 to 433 Volts – Dyn11.
- EL3237 1000 KVA Wilson Transformer:** 6600 to 433 Volts – Dyn11.
- EL3235 500 KVA ABB Transformer:** 11000 to 433 – Dyn11.
- EL3234 250 KVA Wilson Sub Station:** 415 to 1000 Volts – Ynd11.
- EL3233 2000 KVA Tyree Transformer:** 6600 to 415 Volts – Dyn11.
- EL3231 2000 KVA Schneider Transformer:** 6600 to 433 Volts – Dyn11.
- EL3230 2000 KVA Schneider Transformer:** 6600 to 433 Volts – Dyn11.

THIS IS A SELECTION ONLY OF EQUIPMENT AVAILABLE

- EL3226 **33 KV NU-LEC Automatic Circuit Reclose:** Rated 38 KV
- 630 AMP - 50/60 HZ - Complete with Controller.
- EL3224 **315 KVA ABB Transformer:** 11000 to 433 Volts - Dyn11
- Pole Mount.
- EL3222 **60 KVA Siros Transformer:** 415 to 1000 Volts - Dry Type
- Ynd.
- EL3219 **12,500 KVA Wilson Transformer:** 66000 to 6600 Volts
- Complete with OLTC - Dyn1
- EL3214 **750 KVA Wilson Transformer:** 3300 to 433 Volts - Dyn11.
- EL3211 **380,000 KVA ABB Generating Transformer:** 330 KV to 20 KV - ynd1.
- EL3209 **1500 KVA Wilson Transformer:** 22000 to 433 Volts
- Dyn11.
- EL3207 **18 KVA Star Delta Transformer:** 1000 to 415 Volts
- Dry Type.
- EL3206 **2000 KVA ASET Transformer:** 11000 to 433 Volts - Dy11.
- EL3201 **1500 KVA ABB Transformer:** 11000 to 415 Volts - Dyn11.
- EL3199 **2000 KVA Aset Transformer:** 22000 to 433 Volts - 4Dyn11.
- EL3198 **50 KVA Imp Transformer:** SWER - 33 KV to 250 Volts
- Pole Mount.
- EL3195 **250 KVA Auspower Transformer:** 6600 to 3300 Volts
- Dy11.
- EL3193 **100 KVA Imp Transformer:** SWER - 33 KV to 250 Volts
- Pole Mount.
- EL3191 **750 KVA Wilson Hire Transformer:** 11000 to 1000 Volts to 415 Volts - Vector Dyn11yn11.
- EL3189 **300 KVA Westralian Hire Transformer:** 6600 to 440 Volts
- Vector Group 33YZ1.
- EL3188 **1500 KVA Wilson Transformer:** 22000/11000 to 3300 Volts
- Dyn11.
- EL3180 **1000 KVA ABB Transformer:** 11000 to 433 Volts - Dyn11.
- EL3178 **1500 KVA Wilson Transformer:** 22000 / 11000 to 6600 Volts
- Dyn11.
- EL3169 **1500 KVA Wilson Transformer:** 22000 to 433 Volts
- Dyn11.
- EL3167 **1750 KVA GEC Transformer:** 11000 to 433 Volts - Dyn11.
- EL3161 **500 KVA Westralian Transformer:** 3300 to 415 Volts
- Dyn11.
- EL3156 **1500 KVA ABB Transformer:** 11000 to 430 Volts - Dyn1
- Dry type.
- EL3151 **3000 KVA Wilson Transformer:** 33000 to 6600 Volts
- Dyn1.
- EL3149 **3450 KVA Trafo Union Transformer:** 11000 to 720 Volts
- Dy5Ddo.

THIS IS A SELECTION ONLY OF EQUIPMENT AVAILABLE

- EL3146 **1000 KVA Westralian Transformer:** 33000 to 3300 Volts
- Dyn1.
- EL3137 **1500 KVA ABB Transformer:** 11000 to 430 Volts - Dyn1
- Dry Type.
- EL3136 **750 KVA Wilson Transformer:** 3300 to 415 Volts - Dyn11.
- EL3131 **2000 KVA Westralian Transformer:** 6600 to 433 Volts
- Dyn11.
- EL3127 **2500 KVA Westralian Transformer:** 3300 to 415 Volts
- Dyn11.
- EL3114 **300 KVA Wilson Kiosk Transformer:** 11000 to 433 Volts
- Dyn11 - Complete with HV Switchgear.

ELECTRIC MOTORS – SQUIRREL CAGE

2 POLE

| Code | Size | Make | RPM | Remarks |
|--------|--------|----------------|------|------------|
| EM4380 | 5.5 KW | SIEMENS | 2915 | - TEFC |
| EM3014 | 7.5 KW | TECO | 2900 | - TEFC. |
| EM3601 | 11 KW | TOSHIBA | 2900 | - FLP. |
| EM4377 | 11 KW | AEG | 2880 | - TEFC |
| EM3503 | 15 KW | TECO | 2930 | - TEFC. |
| EM3687 | 15 KW | POPE | 2945 | - TEFC. |
| EM3926 | 22 KW | TECO | 2940 | - TEFC |
| EM3927 | 22 KW | TECO | 2940 | - TEFC |
| EM4354 | 30 KW | TECO | 2955 | - TEFC |
| EM4289 | 30 KW | C.P. | 2930 | - TEFC. |
| EM3633 | 37 KW | TECO | 2920 | - D/PROOF. |
| EM3506 | 37 KW | MEZ | 2975 | - TEFC |
| EM3979 | 55 KW | A.C. | 2950 | - TEFC |
| EM3087 | 67 KW | SIEMENS | 2975 | - FLP. |
| EM4418 | 90 KW | WEG | 2980 | - TEFC |
| EM4419 | 90 KW | WEG | 2980 | - TEFC |
| EM3133 | 110 KW | NEWMANN | 2870 | - TEFC. |
| EM4241 | 132 KW | POPE | 2980 | - TEFC. |
| EM3504 | 132 KW | CMG | 2940 | - TEFC. |
| EM3849 | 150 KW | TECO | 2976 | - TEFC |
| EM3748 | 160 KW | POPE | 2987 | - TEFC. |
| EM3570 | 185 KW | BROOK CROMPTON | 2965 | - TEFC. |
| EM4400 | 200 KW | TOSHIBA | 2960 | - TEFC. |
| EM3550 | 220 KW | TOSHIBA | 2980 | - TEFC. |

THIS IS A SELECTION ONLY OF EQUIPMENT AVAILABLE



EM4469: 200 KW TOSHIBA
ELECTRIC MOTOR: 1480 RPM
- TEFC



EM4458: 37 KW TECO
ELECTRIC MOTOR: 1465 RPM
- TEFC



EM4364: 760 KW SIEMENS
ELECTRIC MOTOR: 1490 RPM
- 6600 Volts



EM4412: 355 KW TECO
ELECTRIC MOTOR: 983 RPM
- TEFC



ER3126: 1000 KW TOSHIBA SLIPRING ELECTRIC MOTOR: 985 RPM
- CACA - 3300 VOLTS - UNUSED



EM4347: 200 KW POPE
ELECTRIC MOTOR: 970 RPM
- TEFC



EM4418: 90 KW WEG ELECTRIC
MOTOR: 2980 RPM - TEFC

| | | | | |
|--------|---------|-----------------|------|---------------|
| EM3189 | 250 KW | TOSHIBA | 2975 | - TEFC. |
| EM3569 | 320 KW | TOSHIBA | 2970 | - 3300 VOLTS. |
| EM3658 | 400 KW | TOSHIBA | 2970 | - TEFC. |
| EM3186 | 410 KW | PARSONS PEEBLES | 2960 | - CACA. |
| EM3070 | 750 KW | LOUIS ALIS | 2985 | - D/PROOF. |
| EM4232 | 1570 KW | L & S | 2970 | - 6600 VOLTS |

4 POLE

| Code | Size | Make | RPM | Remarks |
|--------|---------|-----------------------|------|---------------|
| EM3759 | 5.5 KW | CMG | 1440 | - TEFC - FLG |
| EM4278 | 5.5 KW | WEG | 1470 | - TEFC - FLG |
| EM4425 | 7.5 KW | TOSHIBA | 1440 | - TEFC. |
| EM4070 | 7.5 KW | ABB | 1455 | - TEFC. |
| EM4051 | 11 KW | WEG | 1470 | - TEFC - FLG |
| EM4311 | 11 KW | WEG | 1455 | - TEFC |
| EM3008 | 15 KW | TECO | 1455 | - TEFC |
| EM3743 | 15 KW | McCOLL | 1470 | - TEFC |
| EM4268 | 18.5 KW | POPE | 1470 | - FLG |
| EM3273 | 18.5 KW | C.P. | 1450 | - TEFC. |
| EM4150 | 22 KW | POPE | 1480 | - TEFC |
| EM3956 | 30 KW | ASEA | 1460 | - TEFC |
| EM4220 | 30 KW | TOSHIBA | 1480 | |
| EM3897 | 37 KW | POPE | 1475 | - TEFC |
| EM4458 | 37 KW | TECO | 1465 | - TEFC |
| EM3589 | 45 KW | CMG | 1450 | - TEFC. |
| EM4356 | 45 KW | TECO | 1475 | - TEFC |
| EM4308 | 55 KW | TECO | 1470 | - TEFC. |
| EM3507 | 55 KW | CMG | 1480 | - TEFC. |
| EM4453 | 75 KW | TOSHIBA | 1485 | - TEFC. |
| EM3248 | 75 KW | BROOK C.P. | 1480 | - FLP. |
| EM3639 | 90 KW | CROMPTON GREAVES | 1480 | - TEFC. |
| EM4466 | 90 KW | AEI | 1485 | TEFC |
| EM4468 | 90 KW | Pope | 1480 | TEFC |
| EM3816 | 110 KW | TOSHIBA | 1465 | - TEFC. |
| EM4302 | 110 KW | CROMPTON PARKINSON | 1475 | - TEFC. |
| EM4315 | 132 KW | TOSHIBA | 1475 | - TEFC. |
| EM3267 | 132 KW | ABB | 1485 | - FT/FLG |
| EM3173 | 150 KW | WEG | 1480 | - TEFC. |
| EM3346 | 150 KW | TOSHIBA | 1485 | - 1000 VOLTS. |

THIS IS A SELECTION ONLY OF EQUIPMENT AVAILABLE

| | | | | |
|--------|--------|-----------------|------|------------------------|
| EM3312 | 160 KW | SIEMENS | 1486 | - TEFC. |
| EM4444 | 160 KW | WEG | 1480 | - TEFC. |
| EM4299 | 185 KW | TECO | 1486 | - TEFC. |
| EM4451 | 185 KW | TOSHIBA | 1480 | - TEFC |
| EM4467 | 185 KW | WEG | 1485 | TEFC |
| EM3737 | 200 KW | W.E. | 1485 | - TEFC. |
| EM4407 | 200 KW | POPE | 1485 | - TEFC. |
| EM4469 | 200 KW | Toshiba | 1480 | TEFC |
| EM4470 | 200 KW | Pope | 1485 | TEFC |
| EM3218 | 210 KW | TOSHIBA | 1475 | - 6600 VOLTS. |
| EM4438 | 220 KW | TOSHIBA | 1480 | - TEFC. |
| EM4446 | 250 KW | TOSHIBA | 1480 | - TEFC. |
| EM4256 | 250 KW | ASEA | 1475 | - TEFC |
| EM3628 | 265 KW | BROOK C.P. | 1485 | - TEFC. |
| EM3202 | 265 KW | C.P. | 1480 | - TEFC. |
| EM3867 | 280 KW | TOSHIBA | 1485 | - TEFC. |
| EM4210 | 280 KW | TOSHIBA | 1485 | - TEFC. |
| EM4326 | 315 KW | POPE | 1485 | - TEFC. |
| EM4394 | 335 KW | SIEMENS | 1478 | - 6600 VOLTS. |
| EM3387 | 350 KW | POPE | 1485 | - TEFC. |
| EM4454 | 355 KW | WEG | 1484 | - TEFC |
| EM3821 | 400 KW | POPE | 1495 | - TEFC. |
| EM3781 | 440 KW | TOSHIBA | 1480 | - 3300 VOLTS. |
| EM3838 | 450 KW | TECO | 1480 | - TEFC. |
| EM3817 | 450 KW | TOSHIBA | 1480 | - CACA |
| EM3741 | 500 KW | ABB | 1480 | - TEFC. |
| EM3904 | 500 KW | GEC ALSTOM | 1485 | - 6600 VOLTS |
| EM3638 | 560 KW | SHINKO | 1480 | - 3300 VOLTS. |
| EM4399 | 600 KW | TECO | 1485 | - 3300 VOLTS - CACA |
| EM4184 | 600 KW | ABB | 1489 | - 6600 VOLTS |
| EM4182 | 710 KW | SIEMENS | 1485 | - 6600 VOLTS |
| EM4432 | 750 KW | TOSHIBA | 1480 | - 3300 VOLTS |
| EM4429 | 750 KW | POPE | 1492 | - 3300 VOLTS |
| EM4364 | 760 KW | SIEMENS | 1490 | - 6600 VOLTS. |
| EM4197 | 800 KW | TOSHIBA | 1480 | - 3300 VOLTS. |
| EM4462 | 877 KW | SIEMENS | 1493 | - 3300 VOLTS - TEFC |
| EM4392 | 900 KW | TOSHIBA | 1480 | - 6600 VOLTS - CACA |
| EM3712 | 980 KW | PARSONS PEEBLES | 1480 | - CACA. |

| | | | | |
|--------|---------|---------|------|------------------------|
| EM4332 | 1100 KW | TOSHIBA | 1485 | - 3300 VOLTS |
| EM4393 | 1900 KW | TECO | 1490 | - 6600 VOLTS - CACA |
| EM4391 | 5000 KW | ABB | 1491 | - 6600 VOLTS. |

6 POLE

| Code | Size | Make | RPM | Remarks |
|--------|---------|----------|-----|---------------|
| EM4339 | 11 KW | POPE | 950 | - TEFC. |
| EM3481 | 15 KW | GEC | 965 | - TEFC. |
| EM3369 | 18.5 KW | MECHTRIC | 975 | - TEFC. |
| EM4192 | 22 KW | POPE | 950 | - TEFC. |
| EM4436 | 22 KW | ASEA | 970 | - TEFC. |
| EM3374 | 30 KW | POPE | 970 | - TEFC. |
| EM4358 | 30 KW | TECO | 980 | - TEFC. |
| EM3360 | 45 KW | | 975 | - TEFC. |
| EM3917 | 55 KW | NEWMAN | 985 | - D/PROOF |
| EM4251 | 55 KW | TECO | 970 | - 1000 VOLTS |
| EM3153 | 67 KW | POPE | 980 | - TEFC. |
| EM4415 | 75 KW | TECO | 980 | - TEFC |
| EM4405 | 75 KW | TECO | 980 | - TEFC |
| EM3272 | 90 KW | TECO | 978 | - TEFC. |
| EM4346 | 90 KW | POPE | 986 | - TEFC. |
| EM3835 | 110 KW | POPE | 990 | - TEFC. |
| EM4297 | 110 KW | CMG | 990 | - TEFC. |
| EM4077 | 110 KW | TECO | 975 | - TEFC |
| EM3998 | 132 KW | POPE | 990 | - TEFC |
| EM4227 | 132 KW | TECO | 975 | - TEFC |
| EM4324 | 150 KW | POPE | 985 | - TEFC. |
| EM4309 | 160 KW | CMG | 989 | - TEFC |
| EM4226 | 185 KW | TOSHIBA | 985 | - TEFC |
| EM4347 | 200 KW | POPE | 970 | - TEFC |
| EM4160 | 220 KW | TECO | 989 | - 3300 VOLTS. |
| EM4301 | 225 KW | POPE | 985 | - TEFC |
| EM4130 | 250 KW | GEC | 991 | - CACA |
| EM4461 | 250 KW | TOSHIBA | 985 | - TEFC |
| EM4128 | 300 KW | TECO | 986 | - 3300 VOLTS |
| EM4127 | 300 KW | TECO | 985 | - 3300 VOLTS |
| EM4422 | 315 KW | WEG | 989 | - 690 VOLTS |
| EM4421 | 315 KW | WEG | 989 | - 690 VOLTS |
| EM4412 | 355 KW | TECO | 983 | - TEFC |

| | | | | |
|--------|---------|---------|-----|---------------|
| EM3353 | 355 KW | HITACHI | 985 | - 3300 VOLTS. |
| EM4431 | 400 KW | WEG | 989 | - TEFC |
| EM3921 | 450 KW | TECO | 987 | - 3300 VOLTS |
| EM3920 | 450 KW | TECO | 987 | - 3300 VOLTS |
| EM4409 | 500 KW | TOSHIBA | 987 | - 415 VOLTS |
| EM4408 | 500 KW | TOSHIBA | 987 | - 415 VOLTS |
| EM4373 | 550 KW | WEG | 993 | - 3300 Volts. |
| EM4365 | 550 KW | WEG | 993 | - 3300 VOLTS. |
| EM4430 | 630 KW | POPE | 990 | - 3300 VOLTS. |
| EM3554 | 1400 KW | TOSHIBA | 985 | - CACA. |
| EM4416 | 2000 KW | SIEMENS | 991 | - 6600 VOLTS |
| EM3924 | 2500 KW | L.S. | 990 | - 6600 VOLTS |

8 POLE

| Code | Size | Make | RPM | Remarks |
|--------|---------|--------------------|-----|---------------|
| EM3765 | 15 KW | ASEA | 725 | - TEFC. |
| EM3245 | 18.5 KW | NEWMAN | 735 | - FLP. |
| EM3541 | 22 KW | SIEMENS | 730 | - TEFC. |
| EM3455 | 30 KW | POPE | 730 | - TEFC. |
| EM3483 | 30 KW | C.P. | 730 | - TEFC. |
| EM3364 | 37 KW | WESTERN ELECTRIC | 730 | - TEFC. |
| EM4167 | 45 KW | TECO | 725 | - TEFC. |
| EM4162 | 45 KW | TECO | 725 | - TEFC. |
| EM3026 | 75 KW | POPE | 740 | - TEFC. |
| EM4359 | 75 KW | TECO | 750 | - TEFC |
| EM3543 | 90 KW | SIEMENS | 738 | - TEFC. |
| EM3544 | 90 KW | SIEMENS | 738 | - TEFC. |
| EM3166 | 132 KW | TECO | 735 | - TEFC. |
| EM3726 | 150 KW | POPE | 745 | - TEFC. |
| EM3894 | 150 KW | CROMPTON PARKINSON | 738 | - TEFC. |
| EM4153 | 185 KW | TECO | 735 | - TEFC. |
| EM4154 | 185 KW | TECO | 735 | - TEFC. |
| EM4163 | 280 KW | TECO | 735 | - TEFC. |
| EM4164 | 280 KW | TECO | 735 | - TEFC |
| EM3722 | 355 KW | ABB | 744 | - 3300 VOLTS |
| EM4100 | 410 KW | TOSHIBA | 741 | - 3300 VOLTS. |
| EM3738 | 485 KW | L & S | 740 | - 3300 VOLTS. |

THIS IS A SELECTION ONLY OF EQUIPMENT AVAILABLE

10 POLE

| Code | Size | Make | RPM | Remarks |
|--------|--------|---------|-----|--------------|
| EM4186 | 55 KW | GEC | 585 | - TEFC. |
| EM3657 | 75 KW | SIEMENS | 585 | - TEFC. |
| EM3891 | 76 KW | TECO | 589 | - TEFC. |
| EM3027 | 110 KW | AEI | 580 | - TEFC. |
| EM4250 | 150 KW | TECO | 588 | - TEFC |
| EM4194 | 200 KW | POPE | 595 | - TEFC. |
| EM4165 | 220 KW | SHINKO | 590 | - 3300 VOLTS |
| EM3803 | 270 KW | POPE | 594 | - TEFC |
| EM3321 | 355 KW | SHINKO | 590 | - 3300 VOLTS |

12 POLE

| Code | Size | Make | RPM | Remarks |
|--------|---------|---------|-----|--------------|
| EM3572 | 150 KW | AEI | 490 | - D/PROOF. |
| EM3324 | 315 KW | SHINKO | 490 | - CACA |
| EM3813 | 325 KW | HITACHI | 490 | - 3300 VOLTS |
| EM4452 | 1900 KW | TECO | 498 | - 3300 VOLTS |

ELECTRIC MOTORS - SLIPRING

2 POLE

| Code | Size | Make | RPM | Remarks |
|--------|-------|------|------|---------|
| ER3072 | 75 KW | LDC | 2960 | - TEFC. |

4 POLE

| Code | Size | Make | RPM | Remarks |
|--------|---------|---------|------|---------------|
| ER3052 | 7.5 KW | C.P. | 1450 | - TEFC |
| ER3051 | 18.5 KW | NEWMAN | 1465 | - DRIPROOF |
| ER3092 | 37 KW | SIEMENS | 1460 | - TEFC. |
| ER3059 | 110 KW | TECO | 1475 | - TEFC. |
| ER3080 | 185 KW | TECO | 1480 | - TEFC. |
| ER3100 | 250 KW | TECO | 1482 | - TEFC. |
| ER3098 | 300 KW | HYUNDAI | 1470 | - 3300 VOLTS |
| ER3027 | 315 KW | SHINKO | 1485 | - TEFC. |
| ER3099 | 400 KW | TECO | 1485 | - 3300 VOLTS |
| ER3109 | 450 KW | TOSHIBA | 1490 | - 6600 VOLTS |
| ER3094 | 450 KW | TOSHIBA | 1485 | - 3300 VOLTS. |
| ER3074 | 500 KW | TOSHIBA | 1475 | - 415 VOLTS. |
| ER3046 | 530 KW | LSE | 1485 | - 6600 VOLTS. |
| ER3102 | 630 KW | TECO | 1488 | - TEFC |

THIS IS A SELECTION ONLY OF EQUIPMENT AVAILABLE

4 POLE Electric Motors - Slipring Continued

| | | | | |
|--------|---------|---------|------|---------------|
| ER3117 | 630 KW | SIEMENS | 1486 | - 11000 VOLTS |
| ER3095 | 800 KW | TOSHIBA | 1480 | - 3300 VOLTS |
| ER3123 | 2100 KW | POPE | 1490 | - 11000 VOLTS |
| ER3104 | 4500 KW | SIEMENS | 1489 | - 11000 VOLTS |

6 POLE

| Code | Size | Make | RPM | Remarks |
|--------|---------|---------|-----|---------------|
| ER3014 | 300 KW | SIEMENS | 980 | - TEFC. |
| ER3085 | 320 KW | VEM | 985 | - TEFC |
| ER3034 | 395 KW | C.P. | 960 | - D/PROOF. |
| ER3122 | 520 KW | HITACHI | 985 | - 3300 VOLTS |
| ER3093 | 556 KW | HITACHI | 985 | - 3300 VOLTS. |
| ER3120 | 560 KW | HITACHI | 995 | - 3300 VOLTS. |
| ER3025 | 560 KW | SIEMENS | 991 | - TEFC. |
| ER3121 | 600 KW | HITACHI | 985 | - 3300 VOLTS. |
| ER3118 | 880 KW | TECO | 990 | - 6600 VOLTS |
| ER3126 | 1000 KW | TOSHIBA | 985 | - CACA |
| ER3119 | 1500 KW | TECO | 990 | - 6600 VOLTS. |
| ER3125 | 1500 KW | TECO | 980 | - 3300 VOLTS |

8 POLE

| Code | Size | Make | RPM | Remarks |
|--------|---------|---------|-----|---------------|
| ER3061 | 37 KW | BROOK | 725 | - TEFC. |
| ER3082 | 132 KW | BRUSH | 735 | - D/PROOF |
| ER3069 | 1500 KW | TOSHIBA | 740 | - 6600 VOLTS. |
| ER3026 | 1600 KW | ASEA | 742 | - 6600 VOLTS. |
| ER3033 | 1620 KW | ASEA | 741 | - 6600 VOLTS. |
| ER3114 | 3240 KW | ASEA | 740 | - 11000 VOLTS |

10 POLE

| Code | Size | Make | RPM | Remarks |
|--------|---------|------------|-----|----------------|
| ER3115 | 540 KW | mitsubishi | 585 | - 3300 VOLTS. |
| ER3029 | 1225 KW | AEI | 590 | - 11000 VOLTS. |
| ER3124 | 1855 KW | WEG | 591 | - 690 VOLTS. |

12 POLE

| Code | Size | Make | RPM | Remarks |
|--------|--------|---------|-----|---------------|
| ER3053 | 520 KW | SIEMENS | 490 | - 6600 VOLTS. |

THIS IS A SELECTION ONLY OF EQUIPMENT AVAILABLE

ELECTRIC MOTORS - DC & OTHERS

- ES3045 **1706 KW Joliet DC Motor:** 650 RPM - 700 VOLTS
Condition: Unused.
- ES3044 **267 KW ABB DC Motor:** 1031 RPM - 470 Volts.
- ES3043 **300 KW Toshiba DC Motor:** 1480 RPM - 480 Volts.
- ES3041 **150 KW Baldor Gear Motor:** 1750 RPM - 500 Volts.
- ES3033 **190 KW Toyo-Denki DC Motor:** 432 RPM - 480 Volts.
- ES3027 **250 KW Shinko DC Motor:** 1500 RPM - Type GN L315M
33F - 440 Volts.
- ES3014 **145 HP Asea DC Motor:** 1500 RPM
- ES3013 **160 HP GEC DC Motor:** 1500 RPM
- ES3012 **50 HP Electric Power Equipment DC Motor:** 1750 RPM

ELECTRIC MOTOR STARTERS

- ET3059 **15 KW Cegelec VSD:** ALSPA GD 3000 E
- ET3058 **15 KW Toshiba VSD:** Tosvert 130 G2
- ET3050 **200 AMP ABB Starter Panel:** Consisting of 3 x 200 Amp
RGE 7.2 KV ABB Earthing Switches - Fitted with Stromberg
Spam 110 Motor Protection Relay. Condition: New.
- ET3034 **400 AMP Safronics DC Drives:** 400 Volt Output with full
Wave Rectification - DC 12 System.
- ET3033 **650 HP Sprecher & Schuh Auto Transformer Starter:**
415 Volts - Heavy Duty - Complete with Push Button Stop/
Start - Fully Enclosed.

ELECTRICAL - MISCELLANEOUS

- EZ3015 **22KV Couplerco Bolted Coupler:** 425 Amp - Aluminium
Housing - 2 Units Available. Condition: Excellent
- EZ3014 **500 KVAR ABB Power Factor Correction Unit:** 415 Volts
- Complete with Circuit Breaker & Controller.
Condition: As New.
- EZ3012 **800 KVAR Capacitor Technologies Power Factor
Correction Unit:** 415 Volts - Complete with Circuit Breaker
& Controller. Condition: Excellent.
- EZ3007 **1500 KVAR ABB Power Factor Correction:** Unit - 415V
- 2 Units Available. Condition: Excellent.
- EZ3001 **55 KVA Emerson UPS:** Type AP7268 / 558.



FA3049: 110 KW KORFMAN/
AUSMINCO MINE VENT FAN:
Twin 55 KW - 1000 Volts.
Condition: Very Good

THIS IS A SELECTION ONLY OF EQUIPMENT AVAILABLE

FANS AND BLOWERS

- FA3049 **110 KW Korfman/Ausminco Mine Vent Fan:** Twin 55 KW
- 1000 Volts. Condition: Very Good.
- FA3048 **110 KW Dowunder Mining Underground Mine Fan:** 1000V
- 2 Units Available - Galvanised. Condition: Very Good.
- FA3047 **55 KW Downunder Mining Underground Mine Fan:** 1000V
- Weg - 4 Pole Electric Motor - Galvanised.
Condition: Very Good.
- FA3046 **1500 Cogemacoustic Vent Fan:** Complete with 110 KW 4
Pole Motor & Variable Intake Blades. Condition: Very Good.
- FA3045 **77M / MIN Aerzen Blower:** Type GM905 - Maximum Input
90 KW. Condition: Unused.
- FA3044 **80,000 CFM Howden/Wolf Mine Vent Fan:** Wolf 54.25
- 250 KW Drive. Rated 38 M/S @ 4 KPA.
Condition: Very Good.
- FA3032 **800mm Hison Fans Axial Fan:** 1.5 KW - 940 RPM - Wall
Mount. Condition: Good.
- FA3027 **780mm Richardson Fan:** Centrifugal - Fitted with 45 KW 4
Pole Motor - Maximum Capacity 8300 Litres/Second @ 3.1
KPA.
- FA3026 **1640 Wolf Fan:** Centrifugal - Fitted with 110 KW Motor
- Capacity approximately 11,500 Litres/Second @ 4.5 KPA.
- FA3022 **400mm Fanquip Fan:** Axial Type fitted with .25 KW Internal
Motor. Condition: Very Good.
- FA3013 **800 Fan:** High pressure fitted with 30 KW 2 Pole Motor.
- FA3005 **1500 Fan:** Axial - 45 KW @ 975 RPM.

FEEDERS

- FE3063 **750 x 5500 Belt Feeder:** Lagged Head & Tail Drum.
Condition: Excellent
- FE3062 **1500 x 7500 Bateman Kinhill Belt Feeder:** Complete with
30 KW Planetary Drive. Condition: Excellent.
- FE3061 **1500 x 7500 Bateman Kinhill Belt Feeder:** Complete with
30 KW Planetary Drive. Condition: Excellent.
- FE3060 **1000 x 4875 Trio Vibrating Grizzly Feeder:** Complete with
Drive, Spring & Mounts. Condition: Unused.
- FE3059 **750 x 4800 Belt Feeder:** Complete with 2.2 KW Drive & Skid
Base. Condition: Good.
- FE3058 **1500 x 6000 FL SMIDTH Apron Feeder:** 37 KW Electro
Mechanical Drive. Condition: Unused.
- FE3057 **1320 x 6000 Apron Feeder:** 45 KW Electro Mechanical
Drive. Condition: Overhauled.
- FE3055 **2000 x 18000 RCR Tomlinson Apron Feeder:** Complete
with Twin Ma800 Hagglund Drives Condition: Very Good.
- FE3054 **2400 x 7000 Minspec Apron Feeder:** 30 KW Planetary Drive
- Spill Conveyor. Condition: Unused.
- FE3053 **1350 x 3520 Jost Vibrating Feeder:** Heavy Duty - Fitted
with Grizzly. Condition: Unused.

THIS IS A SELECTION ONLY OF EQUIPMENT AVAILABLE

Feeders Continued

- FE3052 **1200 x 5500 Jaques Apron Feeder:** Complete with Rexroth
37 KW Drive. Condition: Good.
- FE3049 **1700x2500 Nordberg Vibrating Grizzly:** 100mm Grizzly
Gap - Complete with 11 KW Drive. Condition: Very Good.
- FE3047 **F212 Syntron Vibrating Feeder:** Tray Size 280 x 1000
- Complete with Controller - 2 Units Available.
Condition: Very Good.
- FE3044 **500 TPH Stamler Reclaim Feeder:** Model BF-7H-0-64S -
Complete with Hydraulics and Spares. Condition: Excellent.
- FE3043 **800 TPH Stamler Feeder Breaker:** Model BF-14B-19-76S
- Complete with Hydraulics and Spare Parts.
Condition: Excellent.
- FE3041 **750 x 1800 Syntron Vibratory Feeder:** Twin Invicta Drives.
- FE3040 **1800 x 4900 Allis Chalmers Vibrating Feeder:** Fitted
with Grizzly - Complete with Drive, Base Frame and ROM
Hopper. Condition: Excellent.
- FE3037 **FHV 45 Syntron Vibrating Feeder:**
- FE3014 **1250 X 4400 Coomo Vibrating Feeder:** Heavy Duty - fitted
with Grizzly complete with springs and Drive Motor.
- FE3006 **F56 Syntron Vibrating Feeder:**

GEAR BOXES

| Code | Size | Make | Description |
|--------|---------|-------------|--|
| GB3070 | 1500 HP | David Brown | Model DB14x20 - Ratio 2.6 to 1. |
| GB3351 | 990 KW | David Brown | Model H1-355 - Ratio 5.823 to 1. |
| GB3350 | 990 KW | David Brown | Model H1-355 - Ratio 5.823 to 1. |
| GB3071 | 950 HP | Richardson | HW17 - Ratio 2.407 to 1. |
| GB3304 | 700 KW | David Brown | H1-250 - Ratio 3.01 to 1. |
| GB3303 | 620 KW | David Brown | H1-250 - Ratio 3.05 to 1 |
| GB3360 | 580 KW | David Brown | Model H2-500 - Ratio 16.0875 to 1. |
| GB3352 | 475 KW | David Brown | H1-180 - Ratio 2.03 to 1 |
| GB3265 | 218 KW | Hansen | NE14ARN - Bevel Helical - Ratio 2 to 1. |
| GB3399 | 91 KW | Hansen | Model RHB21AN - Ratio 12.5 to 1. |
| GB3410 | 165 KW | Flender | Model KZA320 - Ratio 78 to 1 |
| GB3244 | 90 HP | Hansen | Bevel Helical - Type 633T BN - Ratio 24.29 to 1. |
| GB3365 | 78 KW | Hanson | Ratio 24.55 to 1 - Helical - Type D621CT-BN-25 |
| GB3364 | 55 KW | Rossi | Ratio 62.5 to 1 - Triple Reduction. |
| GB3361 | 55 KW | Flender | Bevel Helical - Model KA160PX250 - Ratio 21.06 to 1. |
| GB3330 | 37 KW | Flender | Triple Helical (Model S20-225) - Ratio 19.2 to 1. |
| GB3319 | 35 KW | David Brown | MH-1F - Helical - RATIO 7.13 to 1. |
| GB3257 | 22 KW | Flender | Right Angle - KA 140A - Ratio 29.65 to 1 - Complete with 22 KW 4 Pole |
| GB3348 | 7.5 KW | Sew | Inline - Ratio 32.05 to 1. |
| GB3152 | 3 KW | Sala | Ratio 4.5 to 1. |
| GB3137 | 24" | Morse | Worm & Wheel - M24 - Ratio 50 to 1 |
| GB3033 | 20" | Richardson | Worm & Wheel - Ratio 45.5 to 1. |

THIS IS A SELECTION ONLY OF EQUIPMENT AVAILABLE

| | | | |
|--------|-----|-------------|---|
| GB3091 | 20" | Maximum | Worm & Wheel - M20 - Ratio 15 to 1. |
| GB3273 | 20" | Radicon | Worm & Wheel - BU20 - Ratio 12.75 to 1. |
| GB3061 | 17" | Radicon | Worm & Wheel - Ratio 15.25 to 1. |
| GB3362 | 17" | Radicon | Worm & Wheel - Ratio 20.33 to 1. |
| GB3349 | 17" | Holroyd | Worm & Wheel - HU17 - Ratio 60 to 1. |
| GB3056 | 16" | Borg Warner | Worm & Wheel - Ratio 15 to 1. |
| GB3385 | 16" | MORSE | Worm & Wheel - Ratio 180 to 1. |
| GB3386 | 16" | Morse | Worm & Wheel - Ratio 177 to 1. |
| GB3175 | 14" | Renold | Worm & Wheel - HU14 - Ratio 70 to 1. |
| GB3105 | 14" | Maximum | Worm & Wheel - M14 - Ratio 15 to 1. |
| GB3395 | 14" | Richardson | Worm & Wheel - BU14 - Ratio 45 to 1. |
| GB3176 | 14" | Radicon | Worm & Wheel - RHU14 - Ratio 73 to 1. |
| GB3409 | 14" | Radicon | Worm & Wheel - MBU14 - Ratio 40:1. |
| GB3396 | 14" | Radicon | Worm & Wheel - 14 RHU - Ratio 19.6 to 1. |
| GB3045 | 12" | Richardson | Worm & Wheel - 12 RHU - Ratio 40 to 1. |
| GB3335 | 12" | Radicon | Worm & Wheel - BU12 - Ratio 30 to 1 |
| GB3336 | 12" | Radicon | Worm & Wheel - 12 RHU - Ratio 50 to 1. |
| GB3300 | 12" | Sonnerdale | Worm & Wheel - SD12 - Ratio 25 to 1. |
| GB3292 | 10" | Maximum | Worm & Wheel - MD10 - Ratio 500 to 1. |
| GB3280 | 10" | Richardson | Worm & Wheel - Ratio 365 to 1. |
| GB3408 | 10" | Radicon | Worm & Wheel - BU10 - Ratio 40 to 1. |
| GB3009 | 10" | Morse | Vertical up - MV10 - Ratio 60 to 1. |
| GB3407 | 10" | Richardson | Worm & Wheel - 10RHUF - Ratio 143.7 to 1. |
| GB3111 | 10" | Radicon | Worm & Wheel - RHU - Ratio 60 to 1. |
| GB3011 | 9" | Radicon | Vertical down - BU900 - Ratio 70 to 1. |
| GB3340 | 9" | Crofts | Worm & Wheel - 9U - Ratio 15 to 1. |
| GB3346 | 8" | Radicon | Vertical Down - RHU8 - Ratio 14.3 to 1 |
| GB3338 | 8" | Radicon | Worm & Wheel - 8 RHU - Ratio 25.5 to 1. |
| GB3177 | 8" | Maximum | Worm & Wheel - M8 - Ratio 7.5 to 1. |
| GB3048 | 8" | Sonnerdale | Worm & Wheel - SD8 - Ratio 15 to 1. |
| GB3403 | 8" | Reynold | Worm & Wheel - WM8U - Ratio 60 to 1. |
| GB3378 | 8" | Richardson | Worm & Wheel - Ratio 35 to 1. |
| GB3010 | 7" | Radicon | Worm & Wheel - BUD700 - Ratio 507 to 1. |
| GB3369 | 7" | Radicon | Worm & Wheel - 7 RHU - Ratio 20.5 to 1. |
| GB3132 | 7" | Sonnerdale | Worm & Wheel - Ratio 7.75 to 1. |
| GB3301 | 6" | Sonnerdale | Worm & Wheel - SD6 - Ratio 40 to 1. |
| GB3117 | 6" | Maximum | Worm & Wheel - M6 - Ratio 6.25 to 1. |
| GB3012 | 6" | Radicon | Worm & Wheel - BU600 - Ratio 15 to 1. |
| GB3325 | 5" | Radicon | Worm & Wheel - BU500 - Ratio 7.5 TO 1. |
| GB3219 | 5" | Radicon | Vertical Up - Ratio 60 to 1. |
| GB3180 | 5" | C & J | Worm & Wheel - RHU - Ratio 10 to 1. |
| GB3047 | 5" | Maximum | Worm & Wheel - M5 - Ratio 20 to 1. |
| GB3373 | 5" | Morse | Worm & Wheel - M5 - Ratio 30 to 1. |
| GB3193 | 5" | Holroyd | Vertical Down - Ratio 477 to 1. |
| GB3179 | 4" | Maximum | Worm & Wheel - M4 - Ratio 20 to 1. |
| GB3286 | 4" | Morse | Worm & Wheel - Ratio 25 to 1. |

THIS IS A SELECTION ONLY OF EQUIPMENT AVAILABLE

| | | | |
|--------|----------|--------------|--|
| GB3227 | 4" | Maximum | Worm & Wheel - M4 - Ratio 50 to 1. |
| GB3204 | 4" | Maximum | Worm & Wheel - M4 - Ratio 15 to 1. |
| GB3187 | 3.5" | Maximum | Worm & Wheel - M3.5 - Ratio 5 to 1. |
| GB3221 | 3.5" | Borg Warner | Worm & Wheel - Ratio 24 to 1. |
| GB3211 | 3" | Maximum | Worm & Wheel - Ratio 10.25 to 1. |
| GB3218 | 3" | Wickham & Co | Worm & Wheel - Ratio 19 to 1. |
| GB3195 | 3" | Borg Warner | Worm & Wheel - Ratio 20 to 1. |
| GB3217 | 3" | Reynolds | Worm & Wheel - Ratio 20 to 1. |
| GB3214 | 3" | Maximum | Worm & Wheel - Ratio 15 to 1. |
| GB3146 | TV402 | Sala | Ratio 20 to 1. |
| GB3165 | F | Fenner | Ratio 20 to 1. |
| GB3288 | TD7 | Fenner | Ratio 24.55 to 1. |
| GB3166 | H | Fenner | Ratio 13 to 1. |
| GB3281 | TV122 | Benzlers | Ratio 19.44 to 1 |
| GB3309 | G | Fenner | Ratio 13 to 1 |
| GB3278 | TXTM | Dodge | Ratio 24.65 to 1 |
| GB3169 | TV72 | Sala | Ratio 14.83 to 1. |
| GB3374 | F | Fenner | Ratio 13 to 1. |
| GB3398 | K | Fenner | Ratio 20 to 1 - Fitted with Anti Rollback. |
| GB3387 | S | Fenner | Ratio 13 to 1 - Taper Grip Bore. |
| GB3306 | TV53 | Benzler | Ratio 65 to 1. |
| GB3368 | K13 | Fenner | Ratio 13 to 1. |
| GB3367 | TA12608H | Dodge | Ratio 25.025 to 1. |
| GB3366 | TV202 | Sala | Ratio 20.12 to 1 |
| GB3359 | TV72 | Sala | Ratio 15 to 1 |
| GB3355 | H | Fenner | Ratio 20 to 1 |
| GB3332 | J | Fenner | Ratio 20 to 1. |
| GB3388 | S | Fenner | Ratio 13 to 1 - Taper Grip Bore. |
| GB3307 | G | Fenner | Ratio 20 to 1 |
| GB3345 | AU1250 | Radicon | Ratio 5 to 1 |

GEARED MOTORS

| Code | Size | Make | Description |
|--------|--------|-----------|-----------------------|
| GM3133 | .25 KW | Sew | Output Speed 131 RPM |
| GM3134 | .37 KW | Sew | Output Speed 177 RPM. |
| GM3144 | .37 KW | Fenner | Output Speed 88 RPM |
| GM3200 | .37 KW | ASEA | Output Speed 55 RPM |
| GM3204 | .4 KW | Sanki | Output Speed 1.5 RPM |
| GM3142 | .55 KW | Sew | Output Speed 329 RPM. |
| GM3146 | .55 KW | Sew | Output Speed 83 RPM |
| GM3202 | .55 KW | Siemens | Output Speed 9.5 RPM. |
| GM3041 | .75 KW | Asea | Output Speed 54 RPM. |
| GM3049 | .75 KW | Westate | Output Speed 72 RPM. |
| GM3141 | .75 KW | Sew | Output Speed 146 RPM |
| GM3039 | 1.1 KW | Reduspeed | Output Speed 100 RPM. |

THIS IS A SELECTION ONLY OF EQUIPMENT AVAILABLE

Geared Motors Continued

| | | | |
|--------|---------|----------------|---|
| GM3085 | 1.1 KW | Sew | Output Speed 28 RPM |
| GM3127 | 1.1 KW | Stober | Output Speed 350-1750 Variable Speed. |
| GM3017 | 1.5 KW | Sonnerdale | Output Speed 53 RPM. |
| GM3179 | 1.5 KW | STM | Output Speed 18.8 RPM. |
| GM3187 | 1.5 KW | C & H | Output Speed 83-375 RPM - Variable Speed. |
| GM3209 | 1.5 KW | Mixtec | Output Speed 90 RPM |
| GM3194 | 2.2 KW | Brook/Bonfig | Output Speed 36 RPM |
| GM3074 | 2.2 KW | Motovario | 40 to 200 RPM - Variable Speed. |
| GM3160 | 3 KW | Bonfiglioli | Output Speed 36 RPM. |
| GM3165 | 3 KW | Bonfiglioli | Output Speed 26 RPM |
| GM3118 | 4 KW | Bonfiglioli | Output Speed 235 RPM. |
| GM3188 | 4 KW | Sew-Eurodrive | Output Speed 100 RPM |
| GM3199 | 4 KW | Sew | Output Speed - 142 RPM. |
| GM3203 | 4 KW | C & H | Output Speed 58 RPM |
| GM3105 | 5.5 KW | Reduspeed | Output Speed 37 RPM |
| GM3175 | 5.5 KW | Fenner | Output 12 RPM - Flange Mount. |
| GM3176 | 5.5 KW | Sew-Eurodrive | Output 148 RPM. |
| GM3086 | 7.5 KW | Asea | Output Speed 145 RPM |
| GM3103 | 7.5 KW | Sew Euro Drive | Output Speed 45 RPM |
| GM3157 | 7.5 KW | Flender | Output 28.5 RPM |
| GM3155 | 7.5 KW | Sew | Output Speed 9 RPM |
| GM3061 | 10 HP | Barlow | Output Speed 100 RPM. |
| GM3100 | 11 KW | Asea | Output Speed 320 RPM. |
| GM3151 | 11 KW | Flender | Output Speed 14.25 RPM. |
| GM3168 | 11 KW | Bonfiglioli | Output Speed 45 RPM |
| GM3207 | 11 KW | Weg / Flender | Output Speed 40 RPM. |
| GM3196 | 15 KW | Flender | Output Speed 21 RPM |
| GM3167 | 18.5 KW | Bonfiglioli | Output Speed 42.5 RPM |
| GM3169 | 18.5 KW | Bonfiglioli | Output Speed 106 RPM. |
| GM3110 | 22 KW | G & W | Output Speed 357 RPM |
| GM3003 | 25 HP | C.P. | Output Speed 166 RPM. |
| GM3197 | 30 KW | Sew | Output Speed 54 PRM |

KILNS AND DRYERS

- KD3022 **2134 x 22860 Armstrong Holland Rotary Kiln:** Complete with Burner, Hood, Drive & Refractory. Condition: Unused.
- KD3021 **1470 x 7700 Rotary Dryer:** Complete with Frame & Drive. Condition: Good.
- KD3020 **1000 x 4200 Rotary Dryer:** Complete with Drive, Gas Burner & Skid Base. Condition: Unused.
- KD3019 **900 x 4500 Lockers Engineers Vibrating Fluid Bed Dryer:** Model B945/6 - Complete with Vibrating Screen/Feeder. Condition: Very Good.
- KD3018 **1800 x 7600 Rotary Dryer:** Complete with Drive & Feed Conveyor. Condition: Very Good.

THIS IS A SELECTION ONLY OF EQUIPMENT AVAILABLE



FE3061: 1500 x 7500 BATEMAN KINHILL BELT FEEDER:
Complete with 30 KW Planetary Drive. Condition: Excellent



LE3022: 300 WESCON LAB CONE CRUSHER: Model W300-2
- Maximum Feed 50mm
- Minimum CSS 2mm.
Condition: Unused



LE3024: ROCKLABS RING MILL:
Complete with (2) Bowls & Pucks.
Condition: Excellent



MG3084: SE745 ERIEZ MAGNET:
Manual Cleaning
- To suit up to 1050 Wide Belt.
Condition: Very Good



MG3092: 89 DINGS STURTON-GILL ELECTRO MAGNET: Model 890HSM - Complete with Controller. Condition: Very Good



MP3109: 30" XD KNELSON CONCENTRATOR: Model KC-XD30 - Complete with Controller & Valves. Condition: Very Good



MP3122: 1000 X 1000 FILTER PRESS: 39 Plate - Poly Plates - Complete with Hydraulic Open/Close & Control Panel. Condition: Very Good

LABORATORY EQUIPMENT

- LE3024 **Rocklabs Ring Mill:** Complete with (2) Bowls & Pucks.
Condition: Excellent.
- LE3023 **Almonte Core Sample Cutter:** Diamond Blade - Complete with Core Guides. Condition: Very Good.
- LE3022 **300 Wescone Lab Cone Crusher:** Model W300-2
- Maximum Feed 50mm - Minimum CSS 2mm.
Condition: Unused.
- LE3021 **100 x 60 M & Q Lab Jaw Crusher:** Complete with Hopper, Auto Feeder, Stand & Controller. Condition: New/Unused.
- LE3019 **8" x 5" Laboratory Jaw Crusher:** Complete with Electric Motor & Stand. Condition: Excellent.
- LE3017 **Essa Micron Mill:** Unit is PLC Controlled - Complete with Auto Sampling. Condition: As New.

MAGNETS

- MG3102 **1400mm M & Q Electro Magnet:** Model MQ RCDF-14 - Self Cleaning - Complete with Transformer Rectifier. Condition: New.
- MG3099 **600mm M & Q Tramp Magnet:** Model MQ RCY-P65
- Manual Clean. Condition: New
- MG3097 **800mm M & Q Electro Magnet:** Model MQ RCDF-8
- Self Cleaning - Complete with Transformer Rectifier. Condition: New
- MG3096 **1000mm M & Q Electro Magnet:** Model MQ RCDF-10 - Self Cleaning - Complete with Transformer Rectifier. Condition: New
- MG3095 **1200mm M & Q Electro Magnet:** Model MQ RCDF-12
- Self Cleaning - Complete with Transformer Rectifier. Condition: New
- MG3094 **1200mm Mecal Electro Magnet:** Model LTG-120 - Self Cleaning - Complete with Transformer Rectifier. Condition: Very Good
- MG3093 **SE740 Eriez Electro Magnet:** Manual Cleaning - To suit up to 900mm Belt. Condition: Excellent
- MG3092 **89 Dings Sturton-Gill Electro Magnet:** Model 890HSM
- Complete with Controller. Condition: Very Good.
- MG3091 **SE740 Eriez Electro Magnet:** Manual Cleaning to Suit up to a 900mm Belt. Condition: Excellent.
- MG3090 **SE795 ETS Eriez Magnet:** Electro Magnet - Manual Cleaning - To suit up to 1800mm Belt. Condition: Very Good.
- MG3089 **SE795 Eriez Magnet:** Electro Magnet - Manual Cleaning - To suit up to 1800mm Belt. Condition: Very Good.

Magnets Continued

- MG3084 **SE745 Eriez Magnet:** Manual Cleaning - To suit up to 1050 Wide Belt. Condition: Very Good.
- MG3082 **44 UG Sturton Gill Magnet:** Underground Electro Magnet. To suit up to 1050 Wide Belt. Condition: Very Good.
- MG3081 **800mm M & Q Tramp Magnet:** Model MQ RCY-C-80 - Permanent Self Cleaning - Hydraulic Drive. Condition: New.
- MG3080 **750 Eriez Magnetic Head Drum:** To suit 750mm wide Conveyor. Condition: Unused.
- MG3079 **1600mm M & Q Electro Magnet:** Model MQ RCDF-16
- Self Cleaning - Complete with Transformer Rectifier. Condition: New.
- MG3078 **SE770 Eriez Spare Belt:** 18' 4" Long - New. Condition: Unused.
- MG3076 **600 Sturton Gill Magnet:** Permanent Magnet
- 550 x 650 x 160H
- MG3072 **600 BELT M & Q Tramp Magnet:** Permanent Suspended.
- MG3069 **600mm M & Q Electro Magnet:** Model MQ RCDF-6
- Complete with Transformer Rectifier. Condition: New.
- MG3067 **800 M & Q Electro Magnet:** Model MQ RCDE-8
- Complete with Transformer Rectifier.
- MG3063 **600mm M & Q Electro Magnet:** Model MQ RCDE-6
- Complete with Transformer Rectifier. Condition: New.
- MG3061 **1200mm M & Q Electro Magnet:** Model MQ RCDE-12
- Complete with Transformer Rectifier.
- MG3048 **800mm M & Q Electro Magnet:** Model MQ RCDF-8
- Self Cleaning - Complete with Transformer Rectifier. Condition: New.

MINING PROCESS

- MP3132 **36" Goldfield Jig:** Single Round Jig - Complete with Drive. Condition: Unused.
- MP3131 **42" Goldfield Jig:** Quadplex - Complete with Twin Drives
- 4 Sets Available. Condition: Unused.
- MP3130 **800 AMP Newel Electro Power Electro Winning Cell:**
Complete with Rectifier. Condition: Very Good.
- MP3129 **34M Eimco Thickener:** High Rate - Auto Rake Lift. Condition: As New.
- MP3126 **IPJ 2400 Gekko Inline Pressure Jig:** Complete with Controller. Condition: Very Good.
- MP3125 **C320 Rammer Hydraulic Rock Breaker:** Complete with 527 Hammer, HA 18 Power Pack & Remote Controls. Condition: Unused.

THIS IS A SELECTION ONLY OF EQUIPMENT AVAILABLE

THIS IS A SELECTION ONLY OF EQUIPMENT AVAILABLE

- MP3124 **30" MD Knelson Concentrator:** Manual Discharge
- Complete with Electric Motor. Condition: Refurbished.
- MP3123 **1000 x 1000 Filter Press:** 39 Plate - Poly Plates -
Complete with Hydraulic Open/Close, Auto De-caking,
Discharge Conveyor & Control Panel. Condition: Very Good.
- MP3122 **1000 x 1000 Filter Press:** 39 Plate - Poly Plates
- Complete with Hydraulic Open/Close, Auto De-caking,
Discharge Conveyor & Control Panel. Condition: Very Good.
- MP3121 **30" CD Knelson / Consep Concentrator:** Centre Discharge
- Complete with Electric Motor. Condition: Workshop
Checked.
- MP3120 **Eriez Rare Earth Mag Roll Se:** Model RE40-2
- Complete with Control Box. Condition: As New.
- MP3119 **Eriez Rare Earth Mag Roll Sep:** Model RE40-2
- Complete with Control Box. Condition: As New.
- MP3118 **HMD/Readings Induced Mag Roll Separato:** Model IMRS
2-2-750. Condition: As New.
- MP3117 **HMD/Readings Induced Mag Roll Separato:** Model IMRS
2-2-750. Condition: As New.
- MP3115 **KC-MD 7.5 Consep Hire Knelson Concentrator:** Complete
with Vibrating Screen & Mobile Trolley. Condition: Excellent.
- MP3109 **30" XD Knelson Concentrator:** Model KC-XD30 -
Complete with Controller & Valves. Condition: Very Good.
- MP3106 **800x800x1200 Attritioner:** Twin Cell - Complete with Twin
15 KW Drives. Condition: Very Good.
- MP3103 **HD 42-30 Transmin Hydraulic Breaker:** Complete with
Breaker, Power Pack & various Spares. Condition: Very Good.
- MP3099 **42" x 42" Agitair Flotation Cells:** Bank of 8 Cells.
Condition: Overhauled.
- MP3097 **LD4 Mineral Deposits Spirals:** Model: Reichert LD4
- Bank of 4 - 2 Sets Available. Condition: Good.

MIXERS

- MX3042 **850 x 2200 Lisbon Engineering Pug Mill:** Complete with
Skid Base & 30 KW Drive Motor. Condition: Very Good.
- MX3040 **1200 x 3500 CRE Pug Mill:** Complete with 75 KW Drive
- Rated at 450 TPH. Condition: Excellent.
- MX3039 **1500 LITRE Ribbon Mixer:** 1800 L x 900 W x 1000 H
- 11 KW Drive.
- MX3038 **1500 LITRE Ribbon Mixer:** 1800 L x 900 W x 1000 H
- 11 KW Drive.
- MX3037 **3600x1200x1200 Ribbon Blender:** Bottom Centre
Discharge - Complete with Gear Box & Electric Motor.
Condition: Very Good.

THIS IS A SELECTION ONLY OF EQUIPMENT AVAILABLE

- MX3036 **1200 x 3500 CRE Pug Mill:** 75 KW Drive - Model RP450.
Condition: Excellent.
- MX3035 **75 Q10 Lightnin Mixer:** Ratio 38.2 to 1.
- MX3034 **77Q75 Lightnin Mixer:** Ratio 16.8 to 1. Condition: Very Good.
- MX3033 **880 Q75 Lightnin Mixer:** Ratio 25.6 to 1. Condition: Excellent.
- MX3032 **30" Mac Bro Muller Mixer:** Condition: As New.
- MX3031 **1000x1200x4000 Paddle Mixer:** Bottom Discharge.

PUMPS

- PU3495 **6 FFHP Warman Sump Pump:** Metal Lined - Gland Seal.
- PU3494 **6 x 4 DDAH Weir Warman Slurry Pump:** Metal Lined
- Mechanical Seal. Condition: Appears Unused.
- PU3493 **8 x 6 EEAH Weir Warman Slurry Pump:** Metal Lined
- Metal Impeller - Gland Seal - Bareshaft.
Condition: Appears Unused.
- PU3492 **400 L/S @ 50mm HD Weir Multiflow Dewatering Station:**
Twin 8/6 EEAH Warman Pumps - Pontoon Mounted - Electric
Drive. Condition: Very Good
- PU3491 **8 x 6 EAH Warman Slurry Pump:** Rubber Lined - Rubber
Impeller - Complete with CV Motor Base & 55 KW Electric
Motor. Condition: Overhauled.
- PU3489 **8 x 6 Berkley Diesel Water Pump:** 13.5" Impeller
- 6 Cylinder Deutz Engine. Condition: As New.
- PU3488 **10/8 T AHPP Weir Warman Slurry Pump:** Metal Lined
- Metal Impeller - Mechanical Seal - Bareshaft.
Condition: Overhauled.
- PU3487 **38 CC HRM Warman Slurry Pump:** Metal Lined - Metal
Impeller - Mechanical Seal - Bareshaft. Condition:
Overhauled.
- PU3485 **12 x 10 FFAH Austral Slurry Pump:**
- PU3483 **6 x 4 DG Warman Dredge Pump:** Metal Lined - Metal
Impeller - Centrifugal Seal. Condition: Excellent.
- PU3482 **10/8 FFGH Warman Dredge Pump:** Metal Lined - Metal
Impeller - Gland Seal. Condition: Very Good.
- PU3481 **12 x 10 GGH Austral Dredge Pump:** Metal Lined - Metal
Impeller - Gland Seal. Condition: New.
- PU3480 **250-200 Southern Cross Water Pump:** Bronze Impeller.
Condition: Good.
- PU3478 **8 x 6 EEG Warman Dredge Pump:** Metal Lined - Metal
Impeller - Submersible Bearing Assembly - Complete with
Hydraulic Drive. Condition: Very Good.
- PU3476 **6 x 4 EAH Warman Slurry Pump:** Metal Lined - Metal
Impeller - Metal Centrifugal Seal.

THIS IS A SELECTION ONLY OF EQUIPMENT AVAILABLE



PU3473: 8 x 6 FAH WARMAN SLURRY PUMP: Metal Lined - Poly Impeller Gland Seal Condition: Very Good



PU3475: 2/2 TC Austral Cyklo Pump: Complete with Motor Base - Guard - 3 KW Motor. Condition: New



PU3427: 3 x 2 CAH WARMAN SLURRY PUMP: Rubber Lined - C-CV Motor Base - 4 KW Motor



PU3310: 65 QV SPR Warman Sump Pump



PU3428: 1 x 3/4 ASC Austral Slurry Pump: Condition: New



PU3437: 10 x 8 SGH Austral Dredge Pump: Metal Lined - Metal Impeller - Gland Seal - Hi Lift. Condition: New



PU3494: 6 x 4 DDAH Weir Warman Slurry Pump: Poly Lined - Mechanical Seal. Condition: Appears Unused



PU3092: CL 2003 Nash Vacuum Pump: Condition: Overhauled

- PU3475 **2/2 TC Austral Cyklo Pump:** Complete with Motor Base - Guard - 3 KW Motor. Condition: New.
- PU3474 **8 x 6 FAH Warman Slurry Pump:** Metal Lined - Poly Impeller - Gland Seal - On ZV Base with 150 KW Electric Motor. Condition: Very Good.
- PU3472 **8 x 6 FAH Warman Slurry Pump:** Metal Lined - Poly Impeller - Bareshaft. Condition: Overhauled.
- PU3471 **6 x 4 DAH Warman Slurry Pump:** Metal Lined - Metal Impeller - On CV-L Base & Guard. Condition: Very Good.
- PU3468 **10 x 8 FFAH Warman Slurry Pump:** Metal Lined - Metal Impeller - on ZV Base - Complete with 75KW Motor. Condition: Good.
- PU3467 **8 x 6 EAH Warman Slurry Pump:** Metal Lined - Metal Impeller - on ZV Base - Complete with 110KW Motor. Condition: Very Good.
- PU3466 **6 x 4 DAH Warman Slurry Pump:** Rubber Lined - Rubber Impeller - on ZV Base Complete with 22 KW Motor. Condition: Very Good.
- PU3461 **4 x 3 DAH Warman Slurry Pump:** Metal Lined
- PU3460 **10 x 8 FAH Warman / Cat Pump Set:** Warman 10/8 FAH / Caterpillar.
- PU3458 **6 x 4 FFHH Warman Slurry Pump:** Metal Lined - Gland Seal.
- PU3457 **10 x 8 ESC Austral Slurry Pump:** Metal Lined. Condition: New.
- PU3456 **10 x 8 FAH Warman Slurry Pump:** Liners & Impeller to be fitted as requested. Condition: As New.
- PU3455 **2/2 TC Warman Cyklo Pump:** Complete with 3KW Motor & Motor Base. Condition: Very Good.
- PU3454 **10 x 8 ESC Warman Slurry Pump:** Liners & Impeller to be fitted as required. Condition: As New.
- PU3453 **14 x 12 FFAH Warman Slurry Pump:** Metal Lined - Metal Impeller - Mounted on Skid Base with Electric Motor. Condition: Good.
- PU3451 **2 x 1.5 BAH Austral Slurry Pump:** Bareshaft - Rubber Lined - Rubber Impeller - Gland Seal. Condition: New.
- PU3450 **3 x 2 CAH Austral Slurry Pump:** Bareshaft - Metal Lined - Metal 5 Vane Closed Impeller - Metal Centrifugal Seal. Condition: Rebuilt.
- PU3447 **100 CGP Warman Slurry Pump:** Metal Lined - 5 Vane Closed Impeller - Gland Seal. Condition: Very Good.
- PU3446 **8 x 6 FAH Austral Slurry Pump:** Metal Lined - Metal Impeller - Metal Centrifugal Seal. Condition: New.
- PU3445 **8 x 6 EAH Austral Slurry Pump:** Metal Lined - Metal Impeller - Metal Centrifugal Seal - Complete with E-CV Style Base & Guard. Condition: New.

THIS IS A SELECTION ONLY OF EQUIPMENT AVAILABLE

- PU3444 **6 x 4 EAH Austral Slurry Pump:** Metal Lined - Metal Impeller - Metal Centrifugal Seal. Condition: New.
- PU3443 **6 x 4 DAH Austral Slurry Pump:** Rubber Lined - Rubber Impeller - Metal Centrifugal Seal - Complete with 30KW Motor - D-CV Style Base. Condition: New.
- PU3442 **4 x 3 DAH Austral Slurry Pump:** Metal Lined - Metal Impeller - Metal Centrifugal Seal - Complete with 55KW Motor on D-ZV1 Style Base. Condition: New.
- PU3441 **4 x 3 CAH Austral Slurry Pump:** Rubber Lined - Rubber Impeller - Rubber Centrifugal Seal - Complete with 30KW Motor on C-ZV2 Style Base. Condition: New.
- PU3440 **3 x 2 CAH Austral Slurry Pump:** Metal Lined - Metal Impeller - Gland Seal - Complete with 4KW Motor on C-CV Style Base. Condition: New.
- PU3439 **2 x 1 1/2 BAH Austral Slurry Pump:** Rubber Lined - Rubber Impeller - Rubber Centrifugal Seal - Complete with 4KW Motor on B-CV Style Base. Condition: New.
- PU3438 **1 1/2 x 1 BAH Austral Slurry Pump:** Metal Lined - Metal Impeller - Metal Centrifugal Seal. Condition: New.
- PU3437 **10 x 8 SGH Austral Dredge Pump:** Metal Lined - Metal Impeller - Gland Seal - Hi Lift. Condition: New.
- PU3436 **10 x 8 FGH Austral Dredge Pump:** Metal Lined - Metal Impeller - Gland Seal - Hi Lift. Condition: New.
- PU3435 **8 x 6 FGH Austral Dredge Pump:** Metal Lined - Metal Impeller - Gland Seal - Hi Lift. Condition: New.
- PU3434 **8 x 6 EG Austral Dredge Pump:** Metal Lined - Metal Impeller - Gland Seal - Hi Lift. Condition: New.
- PU3433 **6 x 4 DG Austral Dredge Pump:** Metal Lined - Metal Impeller - Gland Seal - Hi Lift. Condition: New.
- PU3432 **10 x 8 ESC Austral Slurry Pump:** Metal Lined - Metal Impeller - Metal Centrifugal Seal. Condition: New.
- PU3431 **8 x 6 ESC Austral Slurry Pump:** Rubber Lined - Rubber Impeller - Rubber Centrifugal Seal. Condition: New.
- PU3430 **6 x 4 DSC Austral Slurry Pump:** Metal Lined - Metal Impeller - Metal Centrifugal Seal - Complete with D-CV Style Base. Condition: New.
- PU3429 **4 x 3 CSC Austral Slurry Pump:** Metal Lined - Metal Impeller - Metal Centrifugal Seal. Condition: New.
- PU3428 **1 x 3/4 ASC Austral Slurry Pump:** Condition: New.
- PU3426 **3 x 2 CAH Warman Slurry Pump:** Rubber Lined - C-CV Motor Base & 7.5 KW Motor.
- PU3422 **4 x 3 CCAH Austral Slurry Pump Set:** Rubber Lined - Metal Impeller - Gland Seal - Mounted on C-ZV2 Base Complete with Guard. Fitted with 37 KW Drive. Condition: New.

THIS IS A SELECTION ONLY OF EQUIPMENT AVAILABLE

NEW AUSTRAL SLURRY PUMPS



**FULL RANGE
OF SLURRY
AND DREDGE
PUMPS
AVAILABLE**



- PU3419 **8 x 6 EAH Warman Slurry Pump:** Metal Lined - Metal Expeller Ring.
- PU3418 **8 x 6 FAH Warman Slurry Pump:** Metal Lined - Metal Expeller Ring.
- PU3417 **SPX80 Bredel Hose Pump:** Complete with 11 KW Drive. Condition: Very Good.
- PU3416 **65 VDH GPS Warman Sump Pump:** 1200 Leg - Complete with 30 KW 4 Pole Teco Electric Motor. Condition: As New.
- PU3414 **2/2 QV TC Sump Pump:** 1800 Leg - Complete with Motor Mount & Guards. Condition: New.
- PU3413 **50 Verder Flex Hose Pump:** Complete with 2.2 KW Drive.
- PU3410 **2 x 2 Weir Roto-Jet Pump:** Model RG - Max 400 G/PM @ 792m Head. Condition: Overhauled.
- PU3409 **10/8 ESC Warman Slurry Pump:** Rubber Lined - Metal Impeller - Gland Seal - Bareshaft. Condition: Overhauled.
- PU3408 **12 x 10 GGH Warman Dredge Pump:** Metal Lined - Metal Impeller - GZV1 Base & Leverlink Motor Mount.
- PU3405 **300 FL Warman Slurry Pump:** Metal Lined - Metal Impeller - FZV2 Base & Leverlink Motor Mount.
- PU3404 **125 x 100-200 Southern Cross Water Pump:** Bronze Impeller. Condition: Unused.
- PU3399 **4 x 3 EHH Warman Slurry Pump:** Metal Lined - Metal Impeller - Metal Centrifugal Seal - Bareshaft. Condition: As New.
- PU3398 **8 x 6 EAH Warman Slurry Pump:** Rubber Lined - Rubber Impeller - Gland Seal - Bareshaft. Condition: Overhauled.
- PU3397 **10 x 8 FAH Warman Slurry Pump:** Rubber Lined - Rubber Impeller - Rubber Centrifugal Seal - Bareshaft. Condition: Overhauled.
- PU3393 **4 x 3 HH Warman Dewatering Pump Station:** Twin Pump - 1000 Volts - Complete with Header Tank, Motors, Starters - Capacity 65 Litres/Second @ 70m Head per Pump. Condition: Very Good.
- PU3392 **100mm Flygt Submersible Pump:** Model BS2201.011 - 37 KW - 2935 RPM - 415 Volts - 40 Litres/Second @ 60M Head - Imp Dia 243MM. Condition: Appears Unused.
- PU3389 **60mm Brain Mud Skipper Pump:** 24,000 Litres/Hour @ 50m Head - Air Operated. Condition: Good.
- PU3388 **4 x 3 DDAH Warman Slurry Pump:** Metal Lined - Metal Impeller. Condition: Rebuilt.
- PU3386 **8 x 6 EAH Warman Slurry Pump:** Metal Lined - Metal Impeller. Condition: Unused.
- PU3384 **3 x 2 DHH Warman Slurry Pump:** Metal Lined - Metal Impeller. Condition: Unused.

THIS IS A SELECTION ONLY OF EQUIPMENT AVAILABLE

- PU3382 **1 x 3/4 ASC Warman Slurry Pump:** Rubber Lined - Rubber Expeller Ring - 4 Vane Metal Impeller. Condition: Fully Overhauled.
- PU3376 **6/4 DSC Warman Slurry Pump:** Metal Lined - On ZV Base - Complete with 22 KW Motor. Condition: Overhauled.
- PU3373 **SPX15 Bredel Hose Pump:** Complete with .75 KW Motor & Spare Hose.
- PU3370 **40 VCH GPS Warman Sump Pump:** Rubber Lined - Rubber Impeller - 1500 Leg - 11 KW Motor.
- PU3367 **5" Detroit/Kelly & Lewis Fire Pump:** Model 70 - 5" - 9" - Capacity 3750 Litres/Minute - Diesel Engine Powered. Condition: As New.
- PU3363 **65 VDH GPS Warman Sump Pump:** 1800 Leg
- PU3362 **10 x 8 SC Warman Slurry Pump:** Rubber Lined - Metal Impeller. Condition: Good.
- PU3360 **8 x 6 SC Austral Slurry Pump:** Rubber Lined - Metal Impeller - Expeller Seal. Condition: Good.
- PU3358 **4 x 3 HH Warman Slurry Pump:** Metal Lined - Gland Seal Condition: Good.
- PU3356 **6 x 4 DAH Warman Slurry Pump:** Metal Lined - Metal Impeller - On ZV Base - Complete with 55 KW Motor. Condition: Good.
- PU3354 **6 x 4 DDAH Warman Slurry Pump:** Metal Lined - Metal Impeller - On ZV Base - Complete with 75 KW Motor. Condition: Good.
- PU3348 **4 x 3 CAH Warman Slurry Pump:** Metal Lined - Metal Impeller - Gland Seal - Complete with 7.5 KW 4 Pole Motor. Condition: Good.
- PU3346 **100 RV-SP Warman Sump Pump:** 1800 Leg. Condition: Excellent.
- PU3345 **12 x 10 GG Warman Dredge Pump:** Condition: Very Good.
- PU3342 **10 x 8 FAH Warman Slurry Pump:** Metal Lined - Metal Impeller - On F-ZV2 Base - Complete with 132 KW Motor. Condition: New.
- PU3340 **10 x 8 FG Warman Dredge Pump:** Condition: Rebuilt.
- PU3333 **550L Warman Slurry Pump:** Rubber Lined.
- PU3332 **6 x 4 DAH Warman Slurry Pump:** Rubber Lined - Gland Seal - CV Motor Base - 30 KW Toshiba 4 Pole Motor
- PU3330 **12 x 10 FM Warman Slurry Pump:** Rubber Lined - F-ZV2 Pump Base - 250 KW Toshiba Motor.
- PU3326 **12 x 10 FS Warman Solution Pump:**
- PU3315 **100 RV-SP Warman Sump Pump:**
- PU3312 **450L Warman Slurry Pump:** Rubber Lined - 5 Vane Rubber Impeller - Gland Seal.

THIS IS A SELECTION ONLY OF EQUIPMENT AVAILABLE

- PU3310 **65 QV SPR Warman Sump Pump:**
- PU3306 **CL3001 Nash Vacuum Pump:**
- PU3303 **CL2002 Nash Vacuum Pump:**
- PU3301 **CL3002 Nash Vacuum Pump:**
- PU3299 **CL2001 Nash Vacuum Pump:**
- PU3298 **2 x 1 1/2 BAH Warman Slurry Pump:**
- PU3295 **3 x 2 CAH Warman Slurry Pump:**
- PU3291 **1 1/2 x 1 BAH Warman Slurry Pump:**
- PU3287 **4 x 3 CAH Warman Slurry Pump:**
- PU3284 **6 x 4 DAH Warman Slurry Pump:**
- PU3282 **4/4 TC Warman Pump:**
- PU3279 **4 x 3 DDAH Warman Slurry Pump:** Metal Lined - 5 Vane Closed Impeller - On ZV Base. Condition: Overhauled.
- PU3275 **65 QV SP Sump Pump:** Metal Lined - 1500 Leg Condition: Overhauled.
- PU3274 **40 PV SP Sump Pump:** Metal Lined - 1200 Leg Condition: Overhauled.
- PU3272 **20 x 20 GD Warman Dredge Pump:** Bareshaft
- PU3270 **12 x 10 FM Warman Slurry Pump:** Metal Lined / Metal Impeller.
- PU3269 **300L Warman Slurry Pump:** Metal Lined / Metal Impeller
- PU3268 **150 SV SP Warman Sump Pump:**
- PU3265 **6 x 4 DDAH Warman Slurry Pump:** Metal Lined / Metal Impeller
- PU3262 **12 x 10 FFM Warman Slurry Pump:** Metal Lined
- PU3260 **300L Warman Slurry Pump:** Metal Lined - 5 Vane Metal Impeller
- PU3244 **50 GP Warman Slurry Pump:** Rubber Lined - Metal Impeller. Condition: Good.
- PU3241 **12 x 10 FFAH Warman Slurry Pump:** Metal Lined - Metal Impeller. Condition: Good.
- PU3238 **100 RV SP Warman Sump Pump:** Metal Lined
- PU3222 **6 x 4 DAH Warman Slurry Pump:** Rubber Lined - Gland Seal. Condition: Overhauled.
- PU3219 **6 x 4 EESH Warman Solution Pump:** Complete with 185 KW Pope Motor.
- PU3214 **4 x 3 CAH Warman Slurry Pump:** Rubber Lined - 5 Vane Metal Impeller. Condition: Overhauled.
- PU3212 **100 GP Warman Slurry Pump:** Rubber Lined - 5V Metal Impeller.
- PU3209 **8 x 6 FAH Warman Sump Pump:** Metal Lined - Complete with 110 KW Motor Drive. Condition: Good.
- PU3191 **3 x 2 SC Warman Slurry Pump:** Rubber Lined - Expeller Seal.
- PU3165 **100mm KSB Ajax Submersible Pump:** Model KRTK 100 - 400 - Capacity 20 Litres/second @ 50m Head.

THIS IS A SELECTION ONLY OF EQUIPMENT AVAILABLE

- PU3161 **125 x 100 x 250 KSB Ajax Water Pump:** Model 100-250 - Capacity 40 Litres/second @ 15m Head @ 1450 RPM.
- PU3159 **150mm KSB Ajax Submersible Pump:** Model KRTK 150-400 - Capacity 133 Litres/second @ 30m Head @ 1450 RPM.
- PU3153 **200 x 150 x 250 KSB Ajax Water Pump:** Model WKF 150/2 - 2 Stage - Capacity 86 litres/second @ 155m Head.
- PU3152 **200 x 150 x 250 KSB Ajax Water Pump:** Model WKF 150/2 - 2 Stage - Capacity 86 litres/second @ 155m Head.
- PU3145 **250 x 250 x 500 KSB Ajax Water Pump:** Model 250/500-NA - Capacity 210 litres/second @ 65m Head @ 1450 RPM.
- PU3144 **250 x 250 x 500 KSB Ajax Water Pump:** Model 250/500-NA - Capacity 210 Litres/second @ 65m Head @ 1450 RPM.
- PU3128 **50 KSB Multi Stage Pump:** Model MOV1 50 - Coupled to 37 KW 2 Pole Motor - Capacity 10.5 litres per second @ 200m Head.
- PU3116 **5" Mars Positive Displacement Pump:** Model S125
- PU3108 **250 x 200 Worthington Pump:** Model 8LR-13A - Capacity 196 Litres/second @ 20M head.
- PU3092 **CL 2003 Nash Vacuum Pump:** Condition: Overhauled.
- PU3090 **10 x 8 EEM Warman Slurry Pump:** Rubber lined - 5 Vane Rubber Impeller.
- PU3086 **6" Worthington Pump:** Model 4HN-143 - Capacity 55 L/S @ 180M Head @ 2900 RPM.
- PU3084 **6" Geho Positive Displacement Pump:** Model ZPM500 - 7 x 8 x 125 Complete with 55 KW Drives.
- PU3082 **10 x 8 ESC Warman Slurry Pump:** Rubber lined - 8 Vane Metal Impeller.
- PU3080 **4 x 3 CSC Warman Slurry Pump:** Rubber lined - 4 Vane Rubber Impeller.
- PU3074 **12 x 10 Worthington Pump:** Model 10LR15-A . Flow Rate 300 Litres per Second @ 30m Head.
- PU3026 **28 x 24 Warman Dredge Pump:** Maximum flow rate 2400 litres/second @ 55m head. Maximum particle size 380mm
- PU3010 **2" Mono Pump:** Helical - Rotor stainless steel - Model SEOX4 complete with 3KW 2 speed Motor.



PU3275 65QVSP SUMP
PUMP: Metal Lined –
1500 Leg.

THIS IS A SELECTION ONLY OF EQUIPMENT AVAILABLE

SCREENS



PU3443: 6 x 4 DAH Austral Slurry Pump: Rubber Lined - Rubber Impeller - Metal Centrifugal Seal - Complete with 30KW Motor - D-CV Style Base. Condition: New



PU3488: 10 x 8 T AHPP Weir Warman Slurry Pump: Metal Lined - Metal Impeller - Mechanical Seal - Bareshaft. Condition: Overhauled



SC3167: 3000 X 4800 X1D METSO/SCREENIX SCREEN: Low Head - Dewatering Style - Twin 4-3 Exciters. Condition: As New



SC3165: 2400 X 4800X2D LUDOWICI MPE SCREEN: Horizontal Style - Complete with Twin 11 KW Motor, Springs & Mounts. Condition: Excellent



SC3176 7300 x 3000 SCHENCK SCREEN: Double Deck Banana - Complete with Stand, Wet Sump, Drive, Springs, Twin DF601S Exciters. Condition: Excellent



SC3158: HE65 HONERT FL SMIDTH SCREEN EXCITER: Complete with Counterweights & Transport Frame. Condition: Unused



SC3172: JR408 JOST SCREEN EXCITER: Complete with Counterweights & Guard. Condition: Very Good

- SC3176 **3000 x 7300 x 2D Schenck Screen:** Double Deck Banana - Complete with Stand, Wet Sump, Drive, Springs, Twin DF601S Exciters. Condition: Excellent.
- SC3175 **14 x 4 x 3 Deck Screen:** Complete with Pulley. Condition: Very Good
- SC3174 **JR408 Jost Screen Exciter:** Complete with Counterweights. Condition: Good
- SC3173 **JR608 Jost Screen Exciter:** Complete with Counterweights. Condition: Very Good
- SC3172 **JR408 Jost Screen Exciter:** Complete with Counterweights & Guard. Condition: Very Good
- SC3170 **1830 x 4900x2D Bond Equipment Screen:** Horizontal Dewatering Style - Complete with Twin Exciters & Springs.
- SC3168 **900 x 4200 x 1D Honert Screen:** Dewatering Style - Complete with Exciter. Condition: Very Good.
- SC3167 **3000 x 4800 X1d Metso/Screenix Screen:** Low Head - Dewatering Style - Twin 4-3 Exciters. Condition: As New.
- SC3166 **2100 x 5400x1D Schenck Screen:** Dewatering Style - Complete with Twin Electric Exciters, Springs & Mounts. Condition: Very Good.
- SC3165 **2400 x 4800x2D Ludowici MPE Screen:** Horizontal Style - Complete with Twin 11 KW Motor, Springs & Mounts. Condition: Excellent.
- SC3163 **LSK65 Ludowici Screen Exciter:** LMPE - Complete with Counterweights. Condition: Appears Unused.
- SC3162 **250 x 500 Ical Syntron Vibrating Screen:** Model SF212BR - Complete with Controller. Condition: Very Good.
- SC3161 **DF504S Schenck Process Screen Exciter:** Complete with Weights. Condition: Very Good.
- SC3160 **LSK65 Ludowici Screen Exciter:** LMPE - Ex Mining Store - Complete with Transport Frame. Condition: Overhauled.
- SC3158 **HE65 Honert FL Smidth Screen Exciter:** Complete with Counterweights & Transport Frame. Condition: Unused.
- SC3157 **14 x 5 x 2D Jaques Screen:** Torrent. Condition: Good.
- SC3156 **2400 x 4200 Scrubber Trommel:** Skid Mounted - Complete with 110 KW Hydraulic Drive. Condition: Very Good.
- SC3153 **3192 x 8132 RCR Tomlinson Scrubber/Trommel:** Complete with Twin 185 KW Drives, Base Frame & Discharge Trommel. Condition: Very Good.
- SC3151 **3000 x 7300 x2D Schenck Screen:** Double Deck Banana - Complete with Drive, Springs, Twin DF601S Exciters.
- SC3150 **DF3 Schenck Process Screen Exciter:** Type DF300-S Condition: Unused.
- SC3149 **LSK65 Ludowici Screen Exciter:** LMPE - Ex Mining Store Condition: Reconditioned.

THIS IS A SELECTION ONLY OF EQUIPMENT AVAILABLE

- SC3148 **LSK65 Ludowici Screen Exciter:** LMPE - Ex Mining Store. Condition: Reconditioned.
- SC3147 **16 x 6 x 4D Austral Screen:** Complete with Electric Motor & Springs. Condition: Good.
- SC3146 **16 x 6 x 3D Hawk Screen:** Complete with Spings & Electric Motor. Condition: Good.
- SC3145 **1800 x4800 x 1D Allis Chalmers Screen:** Low Head - Twin 3-3 Exciters. Condition: Good.
- SC3144 **2400 x7300 x 2D Schenck Screen:** Horizontal Dewatering Screen - Twin DF601 Exciters. Condition: Good.
- SC3143 **2400 x 6100x1D Allis Chalmers / Svedala Screen:** Low Head - Twin 4-3 Exciters - 1 Units Available. Condition: Very Good.
- SC3141 **3600 x8000 x 2D Schenck Screening Plant:** Banana Screen - Complete with Stand, Chutes, Walkways & Drive Motor. Condition: As New.
- SC3139 **3000 x 7600 RCR Tomlinson Scrubber:** Complete with Twin 220 KW Drives, Base Frame & Underpan. Condition: As New.
- SC3138 **2400 x 3700 Warman Scrubber:** Complete with 132 KW Drive, hansen Gearbox & Base Frame - 2 Units Available. Condition: Very Good.
- SC3135 **48" Kason Screen:** Single Deck - Complete with Spacer for Ball Deck & Lid. Condition: Overhauled.
- SC3134 **16 x 6 x 3D Metro Machinery Screen:** Unit is Galvanised. Condition: As New.
- SC3133 **16 x 6 x 3D Cedar Rapids Screen:** Bare Screen Condition: Very Good.
- SC3132 **8 x 4 x 2D Finlay Screening Plant:** Model Highway/Telescopic - Complete with 6m Feed Hopper - ST3 Lister Engine (2000 Hours) - Capacity 100-400 TPH. Condition: Very Good.
- SC3131 **14 x 5 x 3D Jaques Screen:** Complete with Skid Mounted Stand, Chutes, Motor & Springs. Condition: Very Good.
- SC3130 **HE 30 Honert Screen Exciter:** Complete with Counter Weights. Condition: Appears Unused.
- SC3129 **16 x 6 x 2D Jaques Torrent Screen:**
- SC3127 **2635 x 4175 RCR Tomlinson Scrubber Trommel:** Complete with 150 KW Drive Motor & Spares. Condition: Excellent.
- SC3126 **4300 x 6100 x1D Schenck Screen:** Banana Style Screen - Rated 2500 TPH Coal. Condition: As New.
- SC3118 **UE80 Honert Screen Exciter:** Ex Mining Store. Condition: Appears Unused.
- SC3113 **IFE Screen Exciter:** Model UG80
- SC3111 **HE100 Honert Screen Exciter:** Type HE100L S001
- SC3110 **Siebtechnik Screen Exciter:** Type 31. Condition: Overhauled.
- SC3109 **Siebtechnik Screen Exciter:** Type 31. Condition: Overhauled.
- SC3108 **IFE Screen Exciter:** Model UG60

THIS IS A SELECTION ONLY OF EQUIPMENT AVAILABLE

- SC3105 **1000 x 3900 Rotex Screen:** Model 532A - Suspended Model. Condition: Good.
- SC3104 **12 x 6 x 3D QFE Screen:** Complete with Top Screen Spray Bars. Condition: Very Good.
- SC3103 **72" Kason Screen:** Single Deck - Model K72 2CS Condition: Good.
- SC3096 **1000 x 2000 Scrubber:** Mounted on Frame with Electric Drive Unit. Condition: Good.
- SC3091 **10 x 5 x 1D Allis Chalmers Screen:** Heavy Duty.
- SC3086 **1800 x 4800 x1D Boliden Allis Screen:** Low Head - Single 4-3F Mechanism. Condition: Good.
- SC3083 **500 x 1200 Rotex Screen:** Single Deck - Fitted with Ball Tray and Spray Bars.
- SC3080 **1500 x 3600 Scrubber Trommel:** Trailer Mounted
- SC3078 **6 x 3 x 2D Jaques Screen:** Complete with Springs & Mounts. Condition: Very Good.
- SC3072 **20 x 8 x 3D Allis Chalmers Side Plates:** Left & Right Side Plates - Double Mechanism. Condition: Excellent.
- SC3070 **20 x 8 x 2D Allis Chalmers Screen:** Single Mechanism. Condition: Good.
- SC3068 **3000 x 8000 Sala Trommel:** Heavy Duty - Fitted with Poly Screens - Mounted on Hard Rubber Tyres - Rexroth direct Hydraulic Drive - Complete with 30 KW Hydraulic Power Pack. Condition: Good.
- SC3045 **2000 x 8000 M & Q TROMMEL:** Heavy Duty - Mounted on Six Rubber Tyres. Complete with 11 KW Drive and Reduction Box. Condition: New.

SILOS, TANKS & HOPPERS

- SL3061 **4000 Litre M & Q Pump Sump:** 2.4 x 2.4 x 1.6 - Rubber Lined. Condition: Very Good
- SL3060 **2500 Litre M & Q Pump Sump:** 1950 x 1650 x 1350 - Linatex Lined. Condition: As New
- SL3059 **5 Metre Finlay Feed Hopper:** Complete with 650mm Belt Feeder & Grizzly Bars. Condition: Refurbished.
- SL3057 **70 Metre M & Q Silo:** Complete with Air Slide Discharge and Bottom Fill Pipe. Condition: Very Good.
- SL3055 **4 Metre M & Q Hopper:** 3.2M Long x 2.1M Wide x 2.8M Tall. Condition: As New.
- SL3052 **20 Metre M & Q Primary Feed Bin:** Complete with Grizzly, 800mm Belt Feeder & Bin Vibrators. Condition: As New.
- SL3051 **30 Metre M & Q Silo:** Complete with Access Ladder & Bottom Fill Pipe. Condition: Good.
- SL3050 **80 Ton Feed Hopper:** Complete with Bin Exciters & Tipping Grizzly. Condition: Very Good.

THIS IS A SELECTION ONLY OF EQUIPMENT AVAILABLE

- SL3048 **320,000 Litre Prince Engineering Silo:** 2 Units Available
- Aluminium Construction - 4.3 Diameter - 25M High.
Condition: Excellent.
- SL3045 **10 Metre Silo:** Overall Height 4.8M - Complete with Active Bottom. Condition: Very Good.
- SL3043 **12 Metre Silo:** Overall Height 5.6M - Complete with Active Bottom. Condition: Very Good.
- SL3038 **5,000 Litre Tank:** Stainless Steel on Stand - Tank 1900 Diameter x 1800 High Plus Stand.
- SL3032 **1,000 Litre Mixing Tank:** Rubber Lined - Fitted with .75 KW Mixer.
- SL3031 **1,350 Litre Tank:** Mild Steel - 1200 x 1200.
- SL3030 **500 Litre Mixing Tank:** Rubber Lined - Fitted with .75 KW Mixer.
- SL3023 **2300 Litre Tank:** 1400 Diameter x 1500 High - On Legs - Fitted with 1 HP Twin Impeller Mixer.
- SL3022 **1700 Litre Tank:** 1600 Diameter x 1250 high - On Legs.
- SL3016 **23,000 Litre Horizontal Tank:** 6.2m Long x 2.2m Diameter - On Legs. Condition: Very Good.
- SL3008 **1200 Litre Tank:** Stainless Steel - On Stand.
- SL3007 **4000 Litre Tank:** Stainless Steel - Mounted on 900 High Stand.

SUNDRIES

- SU3091 **3.7 KW Uras Vibrating Motor:** 1440 RPM Condition: Unused.
- SU3090 **3.7 KW Uras Vibrating Motor:** 1440 RPM Condition: Unused.
- SU3087 **175 CFM Airman Air Compressor:** Model DDS175S - Diesel Power. Condition: Very Good.
- SU3086 **1.5 KW Asea Hydraulic Power Pack:** Complete with Tank, Electric Motor & Pump. Condition: Good.
- SU3085 **2 HP Hydraulic Power Pack:** 3 Units Available - Complete with Tank, Motor & Pump. Condition: Good.
- SU3084 **.55 KW Weg Hydraulic Power Pack:** Complete with Tank, Motor & Pump. Condition: Very Good.
- SU3083 **V30 Ebsray Vane Pump:** 730 Litre/Minute @ 350 KPA. Condition: Unused.
- SU3080 **200 HP Caterpillar Diesel Hyd Power Pack:** CAT 3306 Engine - 2 Large & 1 Small Hydraulic Pumps. Condition: Very Good.
- SU3079 **5.5 Metre Agitator:** Complete with Hydraulic Drive Motor & Hydraulic Pump. Condition: Good.
- SU3074 **30 Metre DCE Vokes Dust Collector:** Dalamatic

- SU3073 **28 Metre DCS Dust Collector:** Model 23T - Complete with Fan. Condition: Excellent.
- SU3070 **3350 Watts Invicta Vibrating Motor:** 1440 RPM - B950/4
- SU3066 **1.5 KW Uras Vibrating Motor:** 1455 RPM - KEE-34-4
- SU3063 **3.7 KW Uras Vibrating Motor:** 980 RPM - 6000 Kg Force.
- SU3042 **4000 Watts Invicta (TECO) Vibrating Motor:** 960 RPM - BK-50-75/6
- SU3039 **4800 Watts Invicta (Teco) Vibrating Motor:** 1440 RPM - BK-50-75 / 4
- SU3009 **20 HP Hydraulic Power Pack:** Fitted with twin Abex Dennison Pumps.

VALVES

- VA3111 **300 DVI Valve:** Table E Flanges. Condition: New.
- VA3110 **150 DVI Valve:** Table E Flanges. Condition: New.
- VA3109 **400 DVI Valve:** Table E Flange. Condition: New.
- VA3108 **350 DVI Valve:** Table E Flange. Condition: New.
- VA3107 **250 DVI Valve:** Table E Flanges. Condition: New.
- VA3106 **450 AVK Gate Valve:** Model RSGV with ANSI150 Flanges. Condition: Unused.
- VA3104 **300 AVK Gate Valve:** Model RSGV with ANSI150 Flange Condition: Unused.
- VA3103 **200 DVI Valve:** Table E Flanges. Condition: New.
- VA3102 **150 DVI Valve:** Table E Flange. Condition: New.
- VA3101 **250 x 250 Ducon Rotary Valve:** Complete with Base & Drive Cog. Condition: Unused.
- VA3100 **100mm 3Z Valve:** Class 150 - Fig No. 130A - 316 Stainless Steel. Condition: Unused.
- VA3099 **3" Fisher Valve:** Type RSS. Condition: Unused.
- VA3098 **100mm Tech Taylor Valve:** Condition: Unused.
- VA3097 **200mm Larox Pinch Valve:**
- VA3096 **80mm Larox Pinch Valve:** Type PVE 80 H10 923 LRX
- VA3095 **300 Tech Taylor Valve:** Model AB300-AR00 Condition: Very Good.
- VA3094 **150mm Nu-Con Rotary Valve:** Model CV375 DEMU - Stainless Steel. Condition: As New.
- VA3093 **300 DVI Valve:** Table E Flange. Condition: New.
- VA3086 **100 DVI Valve:** Table E Flanges. Condition: New.
- VA3084 **14" DeZurik Valve:** One way Slurry shut off Valve - Rubber Liners. Condition: Unused.

VA3083 **4" Turnflo Valve:** 316 Stainless Steel.

VA3079 **200mm Tech Taylor Valve:** Model T2F8-AR00

VA3022 **18" Warman Tech Taylor Valve:** Model T2F18-AR00

WASHING EQUIPMENT

WE3015 **175 TPH M & Q Equipment Coarse Material Washer:**
Model MQXC175 - Complete with 22 KW Electric Motor.
Condition: New.

WE3014 **175TPH M & Q Equipment Coarse Material Washer:**
Model MQXC175 - Complete with 22 KW Electric Motor.
Condition: New.

WE3012 **150 TPH Sand Plant:** Consisting of Jaques Triple Deck Screen, Warman Pumps, Bins, Conveyors & 30" Cyclone.
Condition: Good.

WE3011 **125 TPH M & Q Log Washer:** Model MQLW125 - Complete with 110 KW Electric Motor. Condition: New.

WE3008 **100 TPH M & Q Equipment Sand Screw:** Model MQ XL-100
- Fixed Unit - Complete with 11 KW Electric Drive Motor.
Condition: New.

WE3007 **100 TPH M & Q Equipment Sand Screw:** Model MQ XL100
- Mobile Unit complete with Hydraulic Drive. Condition: New.

WE3003 **6000 x 6000 M & Q Equipment Density Bin:** 150 TPH
- Sand Washing Bin. Condition: New.

WE3002 **4500 x 4500 M & Q Equipment Density Bin:** 100 TPH
- Sand Washing Bin. Condition: New.

WINCHES

WH3003 **15 HP Joy Scraper Winch:** Double Drum - Electric
- Overhauled.



MX3040: 1200 x 3500 CRE
PUG MILL: Complete with 75
KW Drive - Rated at 450TPH.
Condition: Refurbished



SL3043: 12 Metre Silo: Overall
Height 5.6M - Complete with
Active Bottom.
Condition: Very Good.



SL3052: 20 METRE M & Q PRIMARY FEED BIN: Complete with Grizzly,
800mm Belt Feeder & Bin Vibrators. Condition: As New



VA3111: 300 DVI VALVE: Table E
Flanges. Condition: New



VA3103: 200 DVI Valve: Table E
Flanges. Condition: New.



WE3015: 175 TPH M & Q
EQUIPMENT COARSE MATERIAL
WASHER: Model MQXC175
- Complete with 22 KW Electric
Motor. Condition: New



WE3007: 100 TPH M & Q
EQUIPMENT SAND SCREW:
Model MQ XL100 - Mobile Unit
complete with Hydraulic Drive.
Condition: New



WE3008: 100 TPH M & Q Equipment Sand Screw: Model MQ XL-100
- Fixed Unit - Complete with 11 KW Electric Drive Motor.
Condition: New.

THIS IS A SELECTION ONLY OF EQUIPMENT AVAILABLE

DON'T FORGET TO TRY US FOR YOUR SLURRY PUMPS AND SPARE PARTS



WE WILL MEET OR BEAT ANY COMPETITORS PRICES

NEW MAGNETS

A FULL RANGE OF
NEW PERMANENT
AND ELECTRO
MAGNETS FROM
600MM TO
1400MM ARE IN
STOCK IN BOTH
MANUAL AND
SELF-CLEANING.



WE ALSO OFFER HIRE EQUIPMENT

M&Q Equipment can offer a large range of hire equipment including:
CONVEYORS, TRANSFORMERS, PUMPS, HOPPERS



SC3115: 48" SWECO
SCREEN. 2 and 3 DECK
UNITS AVAILABLE



SL3059: 5 METER FINLAY FEED
HOPPER Complete with 650mm
Belt Feeder and Grizzly Bars



EL3178: 1500KVA
WILSON
TRANSFORMER
22kv/11kv TO 6.6kv

SAND AND GRAVEL WASHING EQUIPMENT

M&Q EQUIPMENT

Phone: 07 3879 3335 | www.mqe.com.au